

**CONSTRUCTION NOTES FOR END WALLS:**

- 26 ga ROOF FLASHING
- 26ga COLOURED METAL CLADDING
- BUILDING WRAP
- 32ga BASE FLASHING
- 1/2" OSB' SHEATHING
- 2 x 3-5/8" BASE TRACK (14 ga)
- 3-5/8" x 1-5/8" x 1/2" STEEL STUDS (16 ga 50 ksi) @ 16" O/C
- R12 ROCK WOOL BATT INSULATION
- 6 MIL POLY VAPOUR BARRIER
- (2) LAYERS OF 1/2" THICK TYPE X GYPSUM WALL BOARD ON INSIDE FACE
- 4" RUBBER BASEBOARD

**CONSTRUCTION NOTES SIDE WALLS:**

- 26ga ROOF FLASHING
- 26 ga COLOURED METAL
- BUILDING WRAP
- 32ga BASE FLASHING
- 1/2" OSB' SHEATHING
- 2 x 3-5/8" BASE TRACK (14 ga)
- 3-5/8" x 1-5/8" x 1/2" METAL STUDS (16 ga 50 ksi) @ 16" CENTERS (U.N.O.)
- R12 FIBERGLASS BATT INSULATION
- 6 MIL POLY VAPOUR BARRIER
- 5/8" PLYWOOD MATERIAL
- 4" RUBBER BASEBOARD
- PAINTED OR FIBERGLASS LAMINATE MATERIAL

**ROOF**

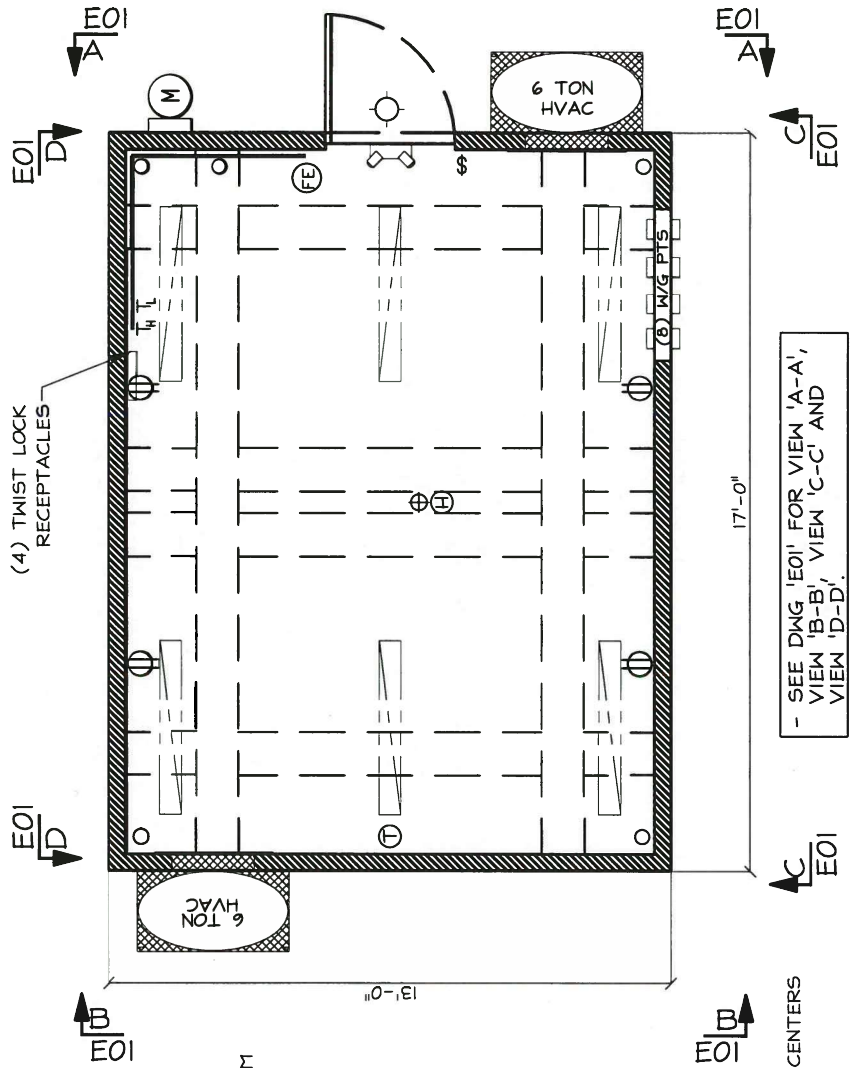
- RD988 DECKING
- 45MIL EPDM
- 10mm OSB' SHEATHING
- Z-BAR 1-3/4" STEP UP TO 3-3/4" (18 ga)
- 12" x 3" x 1" METAL JOISTS (16 ga) @ 16" CENTERS
- R-12 OVER R-20 BATT INSULATION
- 6MIL POLY
- 1/2" VINYL CLAD OSB' PANELS

**FLOOR**

- BASE LINER (30 ga)
- C100 x 8 @ 9" CENTERS
- R-20 INSULATION
- 3/4" T&G PLYWOOD
- COMMERCIAL GRADE VINYL TILE

**LEGEND**

	FLUORESCENT LIGHT
	LO TEMP SENSOR
	HI TEMP SENSOR
	THERMOSTAT
	'AC' DUPLEX RECEP.
	LIGHT SWITCH
	FIRE EXTINGUISHER
	SMOKE DETECTOR
	HEAT DETECTOR
	HALOGEN LIGHT



A	DRAWING UPDATE	04/11/16	JSG
ISSUE	DESCRIPTION	DATE	BY
TITLE: FLOOR LAYOUT			
<b>WESTOWER</b>			
CUSTOMER: CITY OF WINNIPEG			
PROJECT: 13' x 17' SHELTER			
SITE: 2230 MAIN STREET, WINNIPEG, MB			
DWN BY/APP'R'D:	DATE:	PROJECT No.:	DRAWING No.:
JSG	17/08/16	22-00233B	-E04

**NOTE:**  
 - HVAC SYSTEM IS DESIGNED IN SUCH A WAY THAT IF ONE HVAC UNIT FAILS, THE SECONDARY UNIT WILL AUTOMATICALLY CONTINUE COOLING.

**NOTE:**  
 - STRUCTURAL DESIGN OF PROPOSED SHELTER BUILDING AND FOUNDATIONS SATISFIES THE MANITOBA BUILDING CODE 2011.