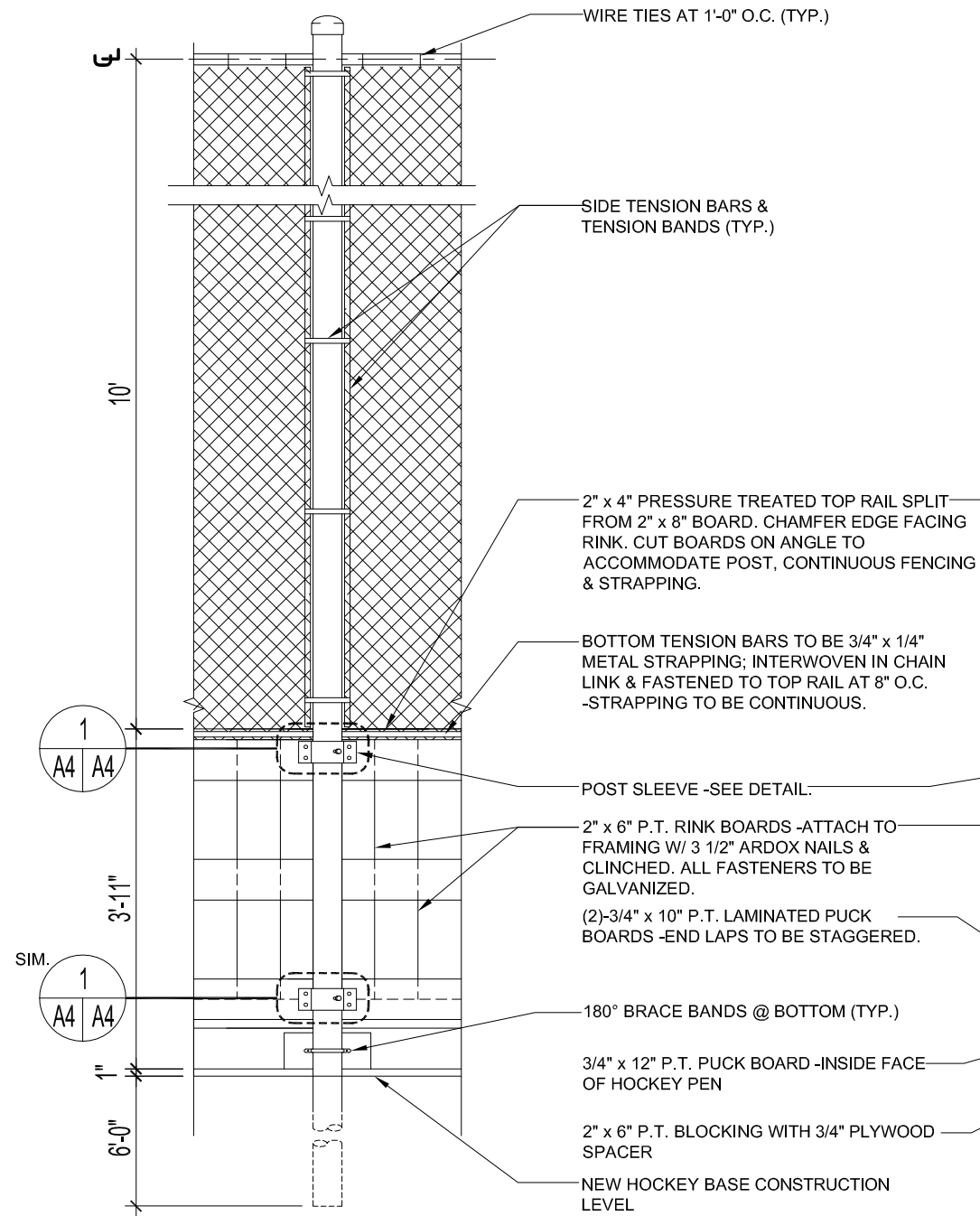
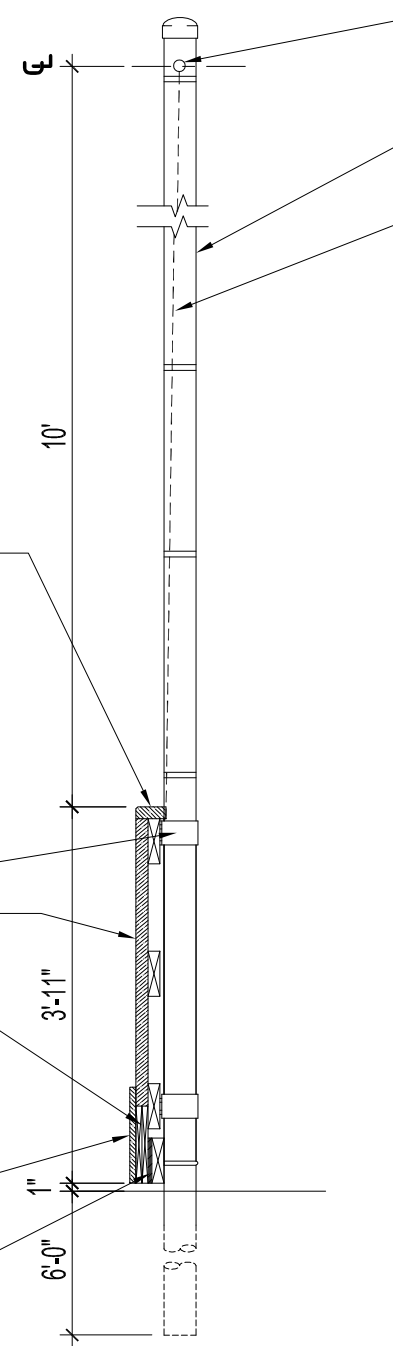


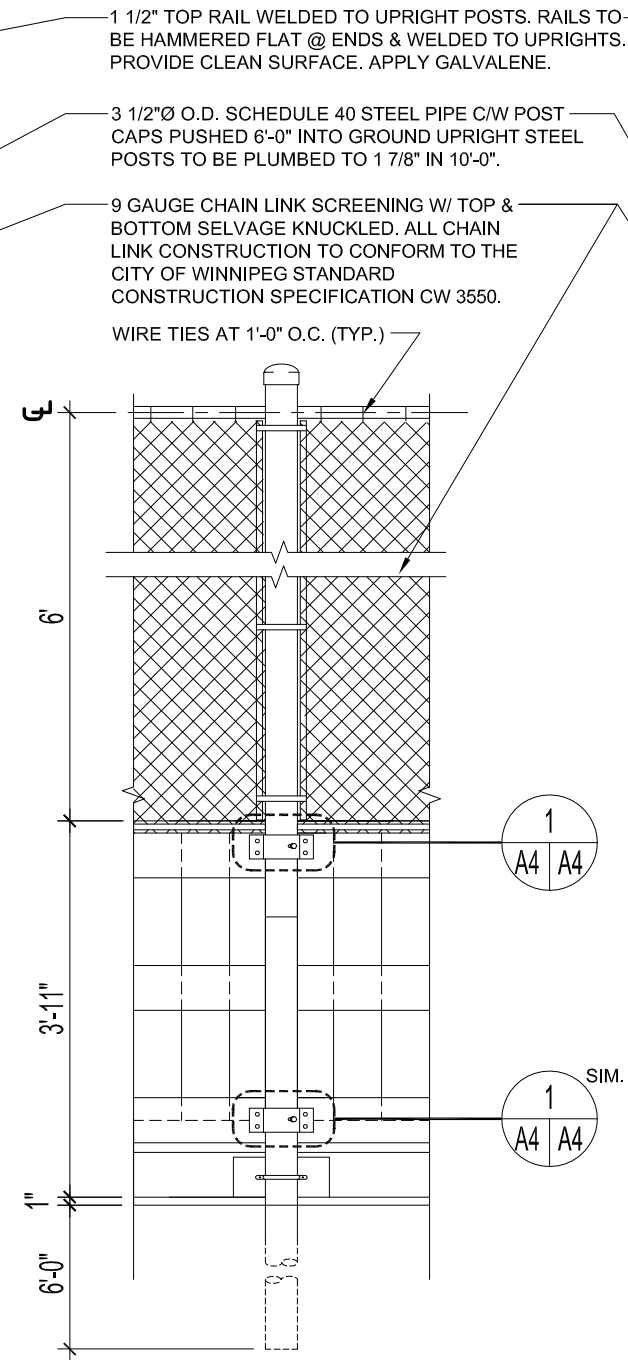
V:\A-CAD\ARCHIVE\SPCS\HOCKEY RINK



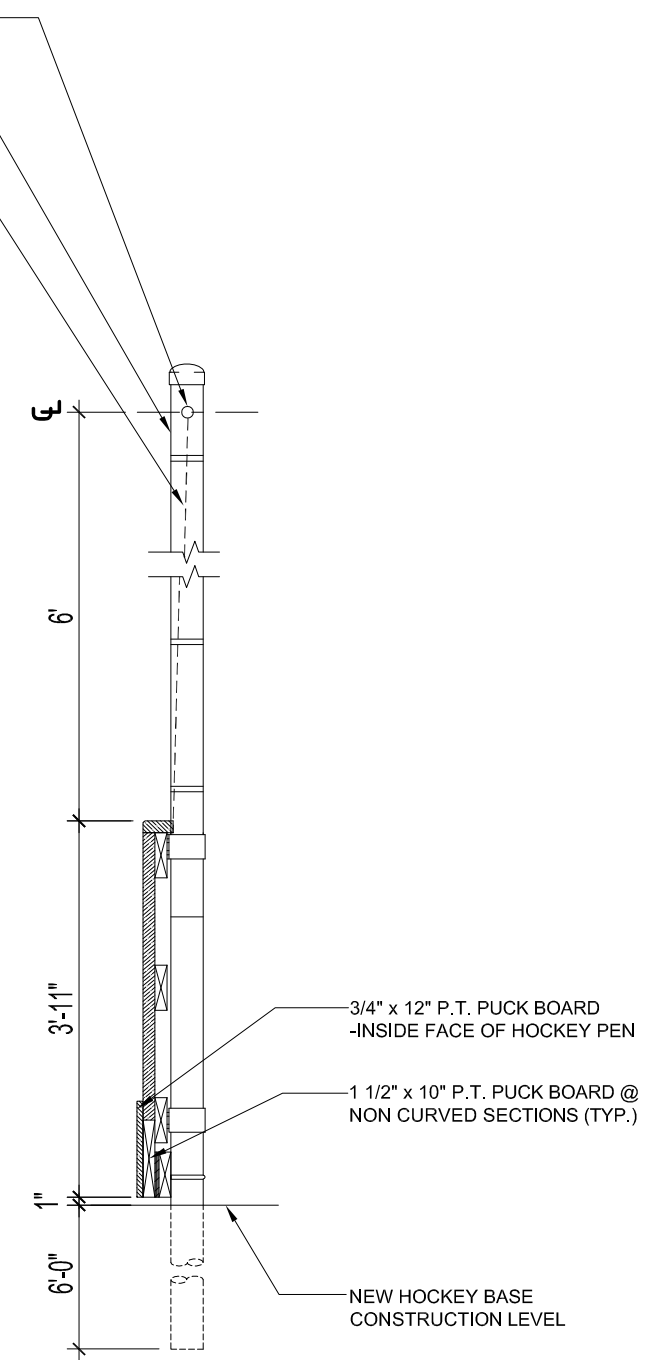
ELEVATION - RINK END BOARDS
SCALE: 1/2" = 1'-0"



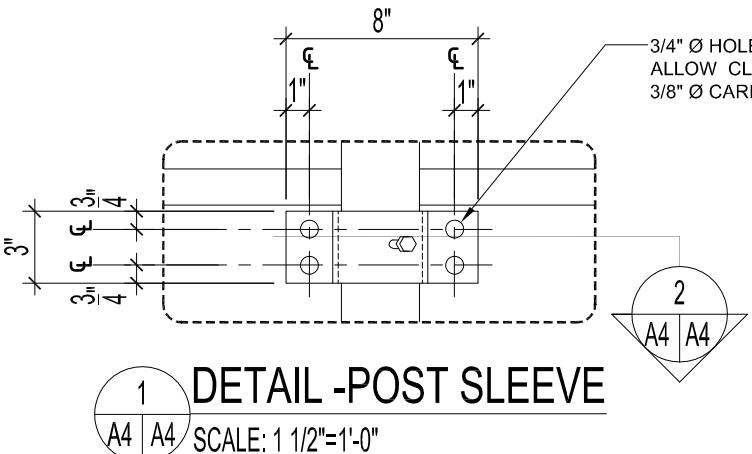
SECTION - RINK END BOARDS
SCALE: 1/2" = 1'-0"



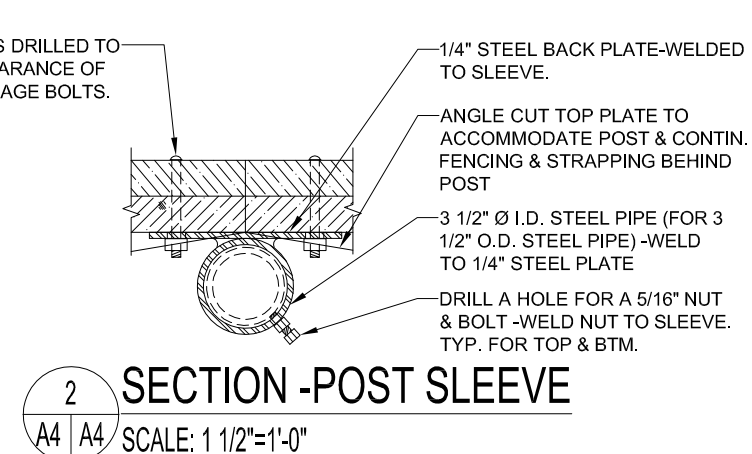
ELEVATION - TYPICAL RINK BOARDS W/ FENCING
SCALE: 1/2" = 1'-0"



SECTION - TYPICAL RINK BOARDS W/ FENCING
SCALE: 1/2" = 1'-0"



1 DETAIL - POST SLEEVE
SCALE: 1 1/2" = 1'-0"



2 SECTION - POST SLEEVE
SCALE: 1 1/2" = 1'-0"

THE CITY OF WINNIPEG PLANNING, PROPERTY AND DEVELOPMENT DEPARTMENT MUNICIPAL ACCOMMODATIONS DIVISION 3-65 GARRY STREET, R3C 4K4		SHEET TITLE RINK BOARD ELEVATIONS W/ FENCING; SECTIONS & DETAILS		PROJECT WINDSOR COMMUNITY CENTRE OUTDOOR RINK REPLACEMENT 99 SPRINGSIDE DRIVE BID OPP # 717-2019	
DRAWN BY: JKR/MMK/SMD/LMC	DESIGNED BY:	CHECKED BY: B. KAZUN	APPROVED BY: B. KAZUN	DATE: 2019.07.18 eFILE: HOCKEY RINKS_2019.dwg	SCALE: AS SHOWN PROJECT No: 2019-090
				SHEET No: A4	