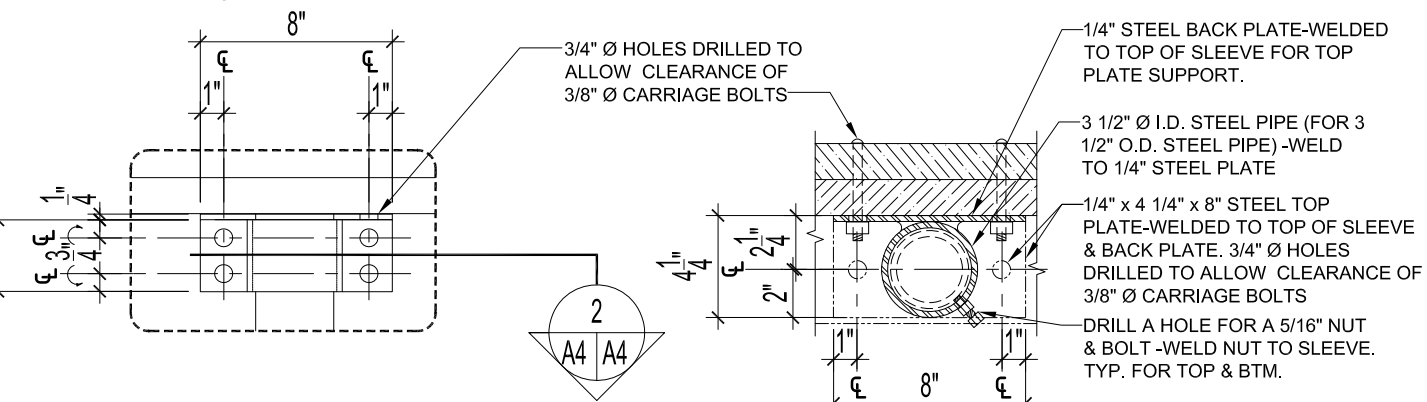


SECTION -PLAYER /PENALTY BOX WITH FENCING

SCALE: 1/2"=1'-0"

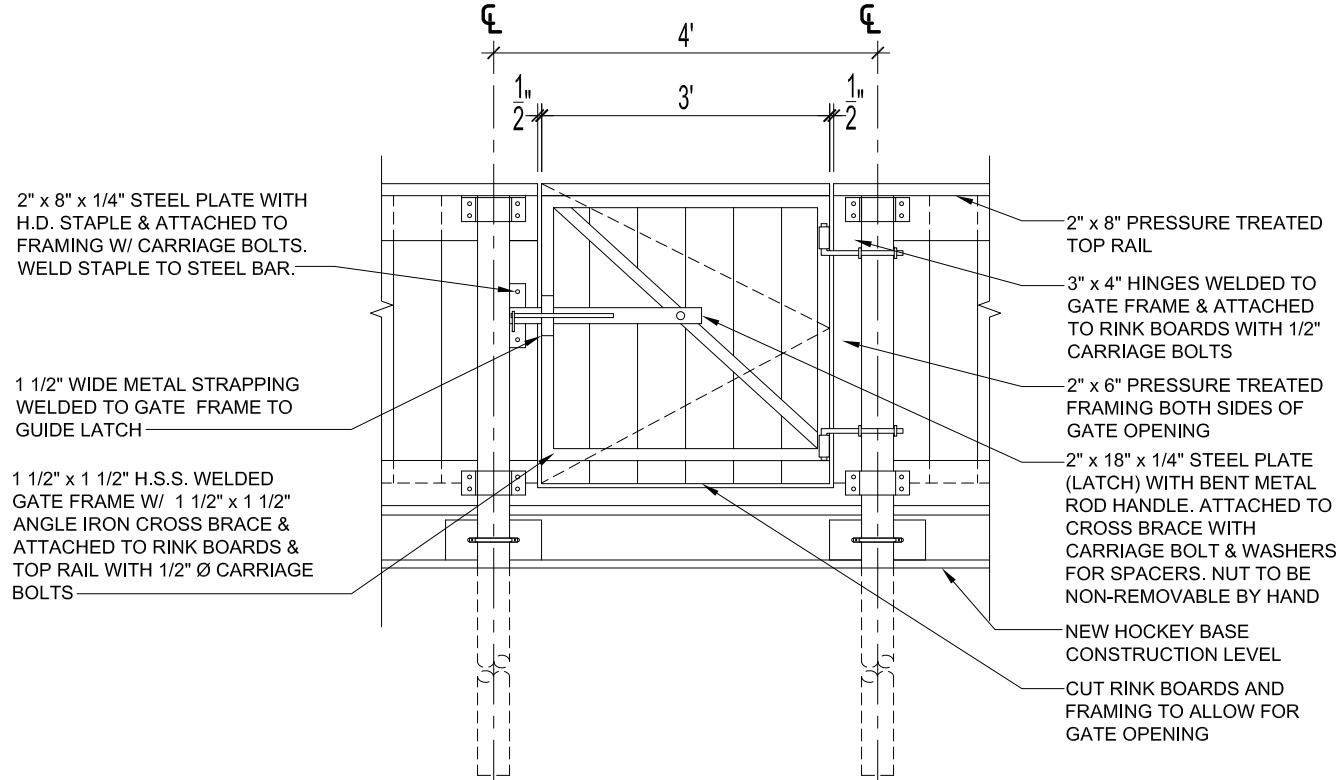


DETAIL -POST SLEEVE

SCALE: 1 1/2"=1'-0"

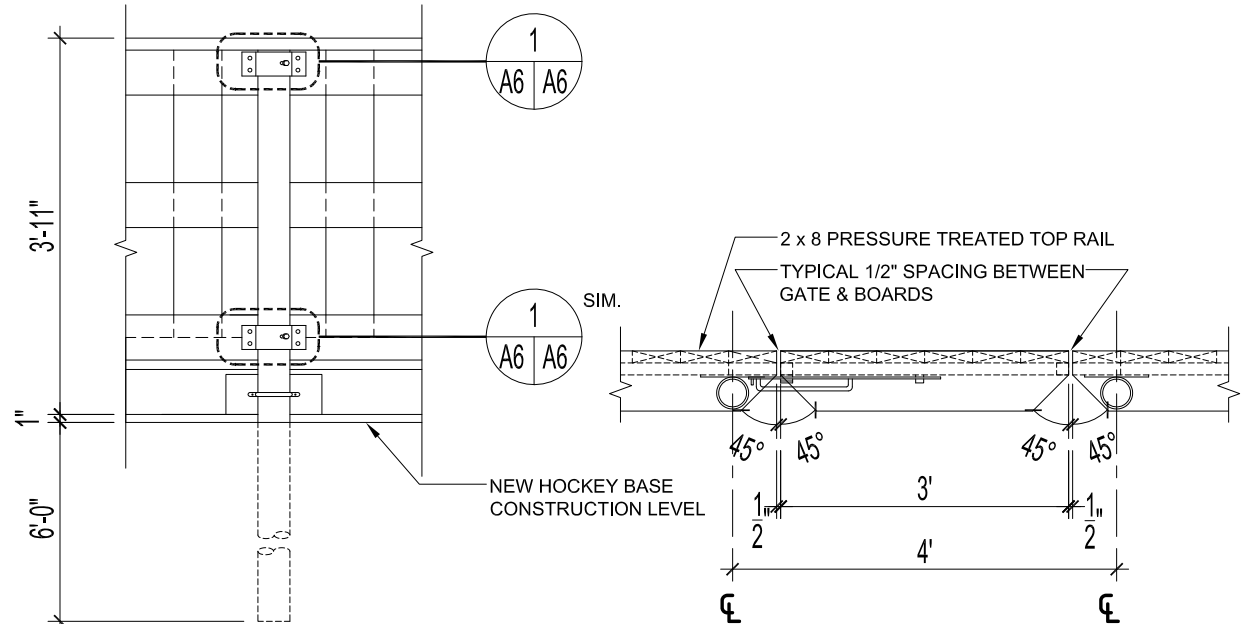
SECTION -POST SLEEVE

SCALE: 1 1/2"=1'-0"



TYPICAL ELEVATION -PLAYERS /PENALTY BOX ACCESS GATES

SCALE: 1/2" = 1'-0"



ELEVATION -TYPICAL RINK BOARDS WITHOUT FENCING

SCALE: 1/2" = 1'-0"

ACCESS GATES -TYPICAL PLAN VIEW

SCALE: 1/2" = 1'-0"

V:\A-CAD\ARCHIVE\SPCS\HOCKEY RINK

THE CITY OF WINNIPEG PLANNING, PROPERTY AND DEVELOPMENT DEPARTMENT MUNICIPAL ACCOMMODATIONS DIVISION 3-65 GARRY STREET, R3C 4K4		SHEET TITLE PLAYERS /PENALTY BOXES WITH FENCING SECTION, ELEVATIONS & DETAILS		PROJECT CC-107 WINDSOR COMMUNITY CENTRE OUTDOOR RINK REPLACEMENT 99 SPRINGSIDE DRIVE BID OPP # 717-2019	
DRAWN BY: MMK/SMD/LMC	DESIGNED BY:	CHECKED BY: B. KAZUN	APPROVED BY: B. KAZUN	DATE: 2019.07.18 eFILE: HOCKEY RINKS_2019.dwg	SCALE: AS SHOWN PROJECT No: 2019-090
				SHEET No: A6	