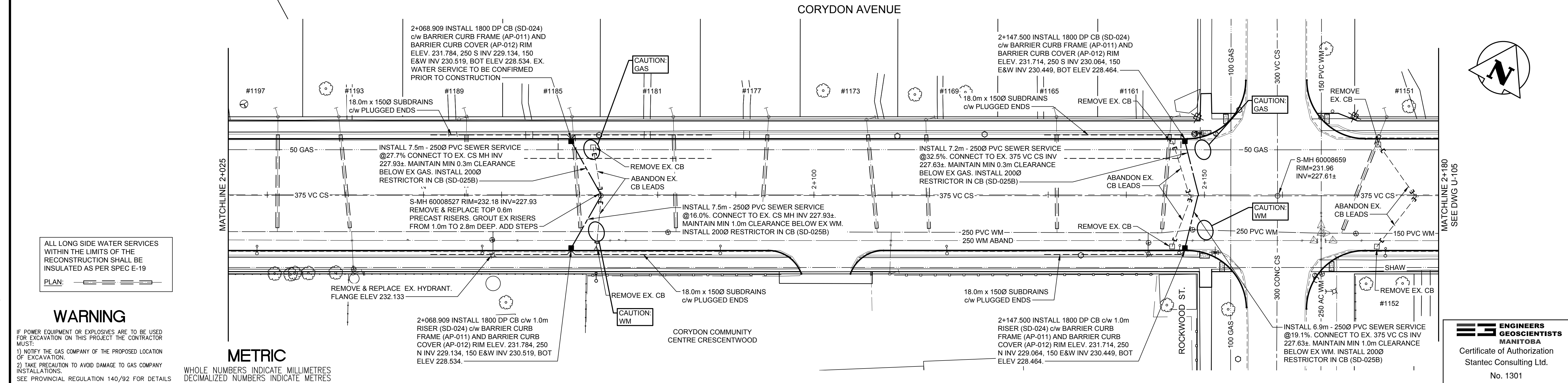


- NOTES:**
1. ADJUST MANHOLE RIMS AND GATE VALVES TO NEW GRADES.
  2. CONTRACTORS TO CONFIRM THE LOCATION OF ALL UTILITIES/SERVICES IN THE FIELD PRIOR TO CONSTRUCTION.
  3. CB OFFSETS ARE DIMENSIONS FROM CB CENTER TO B.O.C.
  4. ALL NEW SEWER SERVICE PIPE TO BE TRENCHLESS INSTALLATION.



ALL LONG SIDE WATER SERVICES WITHIN THE LIMITS OF THE RECONSTRUCTION SHALL BE INSULATED AS PER SPEC E-19  
 PLAN:

**WARNING**

IF POWER EQUIPMENT OR EXPLOSIVES ARE TO BE USED FOR EXCAVATION ON THIS PROJECT THE CONTRACTOR MUST:  
 1) NOTIFY THE GAS COMPANY OF THE PROPOSED LOCATION OF EXCAVATION.  
 2) TAKE PRECAUTION TO AVOID DAMAGE TO GAS COMPANY INSTALLATIONS.  
 SEE PROVINCIAL REGULATION 140/92 FOR DETAILS

**METRIC**

WHOLE NUMBERS INDICATE MILLIMETRES  
 DECIMALIZED NUMBERS INDICATE METRES

	WATERMAIN			HYDRO			
	HYDRANT			M.T.S.			
	VALVE			CONCRETE			
	LAND DRAINAGE SEWER			ASPHALT			
	WASTE WATER SEWER			SIDEWALK			
	MANHOLE			MILL JOINT			
	CATCH BASIN			PROPERTY LINE			
	CURB INLET/CATCH PIT			SURVEY BAR			
	TRANSIT STOP			DITCH			
	CULVERT			ELEVATION			
	GAS			SIDEWALK RAMP			
	EXISTING			EXISTING			
	LEGEND-PLAN			LEGEND-PROFILE			

**LOCATION APPROVED UNDERGROUND STRUCTURES**

SUPV. U/G STRUCTURES COMMITTEE DATE

**NOTE:**  
 LOCATION OF UNDERGROUND STRUCTURES AS SHOWN ARE BASED ON THE BEST INFORMATION AVAILABLE BUT NO GUARANTEE IS GIVEN THAT ALL EXISTING UTILITIES ARE SHOWN OR THAT THE GIVEN LOCATIONS ARE EXACT. CONFIRMATION OF EXISTENCE AND EXACT LOCATION OF ALL SERVICES MUST BE OBTAINED FROM THE INDIVIDUAL UTILITIES BEFORE PROCEEDING WITH CONSTRUCTION.

B.M. ELEV.	
NO.	REVISIONS
DATE	DATE
BY	BY

**Stantec**  
 500 - 311 Portage Avenue, Winnipeg MB Canada  
 www.stantec.com

DESIGNED BY: R.S.  
 CHECKED BY: [ ]  
 DRAWN BY: W.A.  
 APPROVED BY: [ ]  
 HOR. SCALE: 1:250  
 VERTICAL: [ ]  
 RELEASED FOR CONSTRUCTION: [ ]  
 DATE: 2019/06/12

ENGINEER'S SEAL  
**PRELIMINARY DRAWING**  
 NOT TO BE USED FOR CONSTRUCTION

**THE CITY OF WINNIPEG**  
 PUBLIC WORKS DEPARTMENT  
 ENGINEERING DIVISION

2019-2023 STAFFORD/TAYLOR/CORYDON  
 TENDER 1  
 CORYDON AVENUE  
 WATERLOO STREET TO STAFFORD STREET  
 UNDERGROUND INFRASTRUCTURE

SHEET 27 OF 55  
 CAD FILE DRAWING NUMBER 08020u-101-932.dwg  
 CITY DRAWING NUMBER P-3524-27

U:\1\1378020\0320\_drawing\0320\_sheets\101-932.dwg  
 2019/06/12 2:28:28 PM by: kromer@stantec.com