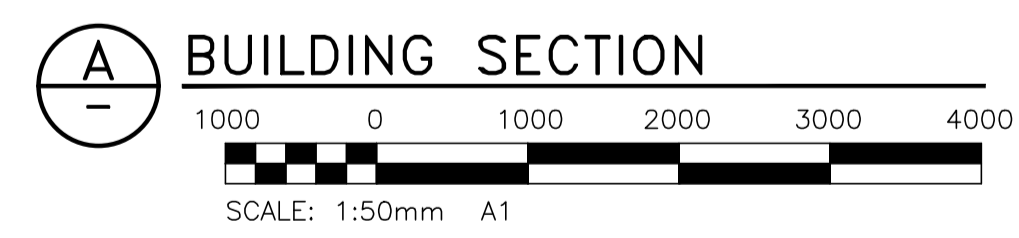
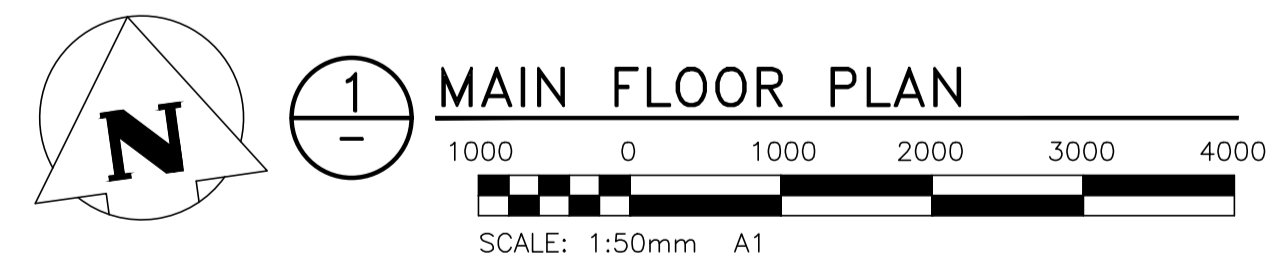


NOTES:
 1. THE REQUIRED TEMPERATURE CODE FOR ALL HAZARDOUS LOCATION IS T2A (280°C).

LEGEND:

- HAZARDOUS ZONE 1, GROUP IIA & CATEGORY 2 WET (MOISTURE & CORROSIVE)
- CATEGORY 1 (MOISTURE)
- NON-HAZARDOUS
- 260°C. AIT AUTO IGNITION TEMPERATURE



**ENGINEERS
 GEOSCIENTISTS
 MANITOBA**
 Certificate of Authorization
KGS Group
 No. 245

B.M.	-				
ELEV.	-				
NO.	REVISIONS	DATE	DESIGN	CHECK	
00	ISSUED FOR TENDER AND CONSTRUCTION	2019/07/12	LU	JAB	

KGS GROUP
 CONSULTING ENGINEERS

DESIGNED BY: L. UPPAL
 CHECKED BY: J. BOUCHARD

DRAWN BY: G. NELSON
 APPROVED BY: J. BOUCHARD

SCALE: AS NOTED
 ISSUED FOR CONSTRUCTION BY: J. BOUCHARD

DATE: 2019/07/12
 DATE:

CONSULTANT NO.: 19-0107-002_E09

ENGINEER'S SEAL

THE CITY OF WINNIPEG
 WATER AND WASTE DEPARTMENT

CLIFTON FLOOD PUMPING STATION UPGRADES

**ELECTRICAL
 HAZARDOUS LOCATION PLAN**

CITY DRAWING NUMBER: 1-0125F-E0010-001

SHEET	REV.	SIZE
00	00	A1