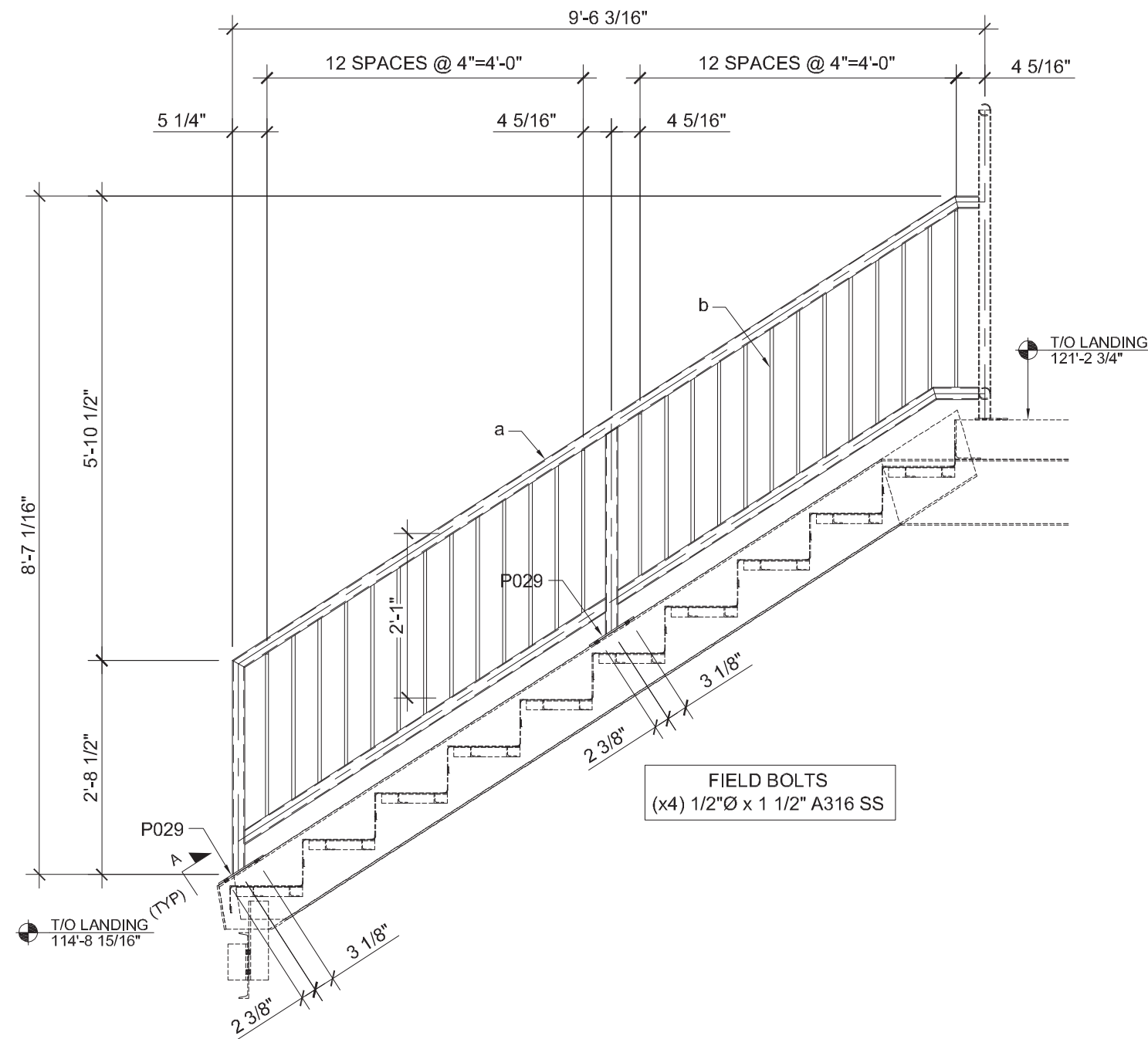
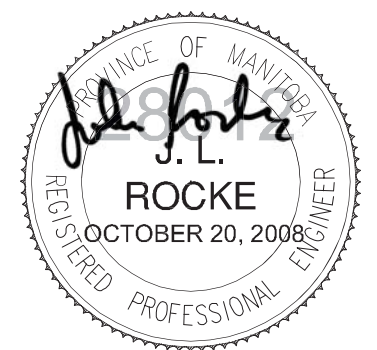
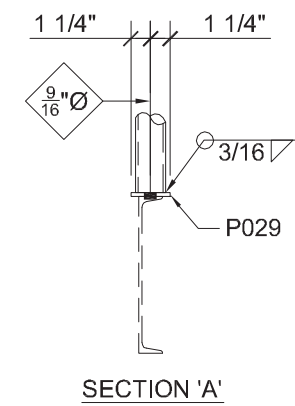


BILL OF MATERIALS

QTY	MARK	DESCRIPTION	LENGTH	WEIGHT	REMARKS
ONE	025	HANDRAIL	9'-6 3/16"	-	-
ONE	a	1 1/2"Ø STD. PIPE	27'-6" LINEAL	-	A53 GRADE B
26	b	1/2" Ø BAR	2'-1"	-	-
2	P029	PL 1/4x2 1/2"	0'-8"	-	-
		FIELD BOLTS		-	-
4		1/2Ø A316 SS	0'-1 1/2"	-	-



FIELD BOLTS
(x4) 1/2"Ø x 1 1/2" A316 SS



MK 025 - HANDRAIL x 9'-6 3/16" LINEAL
(ONE REQUIRED AS SHOWN)

DRAWING NOTES:
NOTE

LIABILITY FOR THESE DRAWINGS IS LIMITED TO DRAFTING SERVICES ONLY. NO ENGINEERING RESPONSIBILITY INCLUDED.

FABRICATOR/ERECTOR IS RESPONSIBLE FOR VERIFYING ALL DIMENSIONS & ELEVATIONS AND CHECKING ALL SITE CONDITIONS THAT COULD AFFECT STEEL ERECTION & PLACEMENT TO DIMENSIONS INDICATED ON ERECTION DRAWINGS.

TOTAL WEIGHT
0.0 LBS

STEEL GRADE
ALL STRUCT. STEEL TO CSA G40.21
W SECT, LIGHT GA STL: 350W U.N.O.
HSS SECT: 350W CLASS C U.N.O.
CHNLS, L'S, PL, ETC.: 300W U.N.O.

WELD
MIN. 3/16" FILLET U.N.O.

HOLES
9/16"Ø U.N.O.

FINISH
GALVANIZED + EPOXY PAINT

REF DWG & MEMBER LOCATION (S)
E01 & E02
GRID C2
GRID 1.1 & 1.2

1	AS-BUILT	OCT/20/2008	JMH	RLA
0	FOR APPROVAL	JULY/17/2008	JMH	RLA
REV	DESCRIPTION	DATE	BY	CHK'D

Tractus Group Incorporated
70 Arthur Street, Studio 100
Winnipeg, Manitoba, R3B 1G7

P (204) 942-6035
F (204) 942-6034
E info@tractusgroup.com

PROJECT/CLIENT					
WESTERN RECREATION ELMWOOD KILDONAN POOL WATERSLIDE STAIR 909 CONCORDIA AVENUE, WINNIPEG, MANITOBA					
MEMBER DESCRIPTION					
HANDRAIL					
DRAWN BY	DRAWN DATE	SCALE	SIZE	DRAWING NUMBER	REV
JC	JULY/07/2008	NTS	B	025	1
CHK'D BY	CHECKED DATE	JOB No.			
RLA	JULY/14/2008	28012			