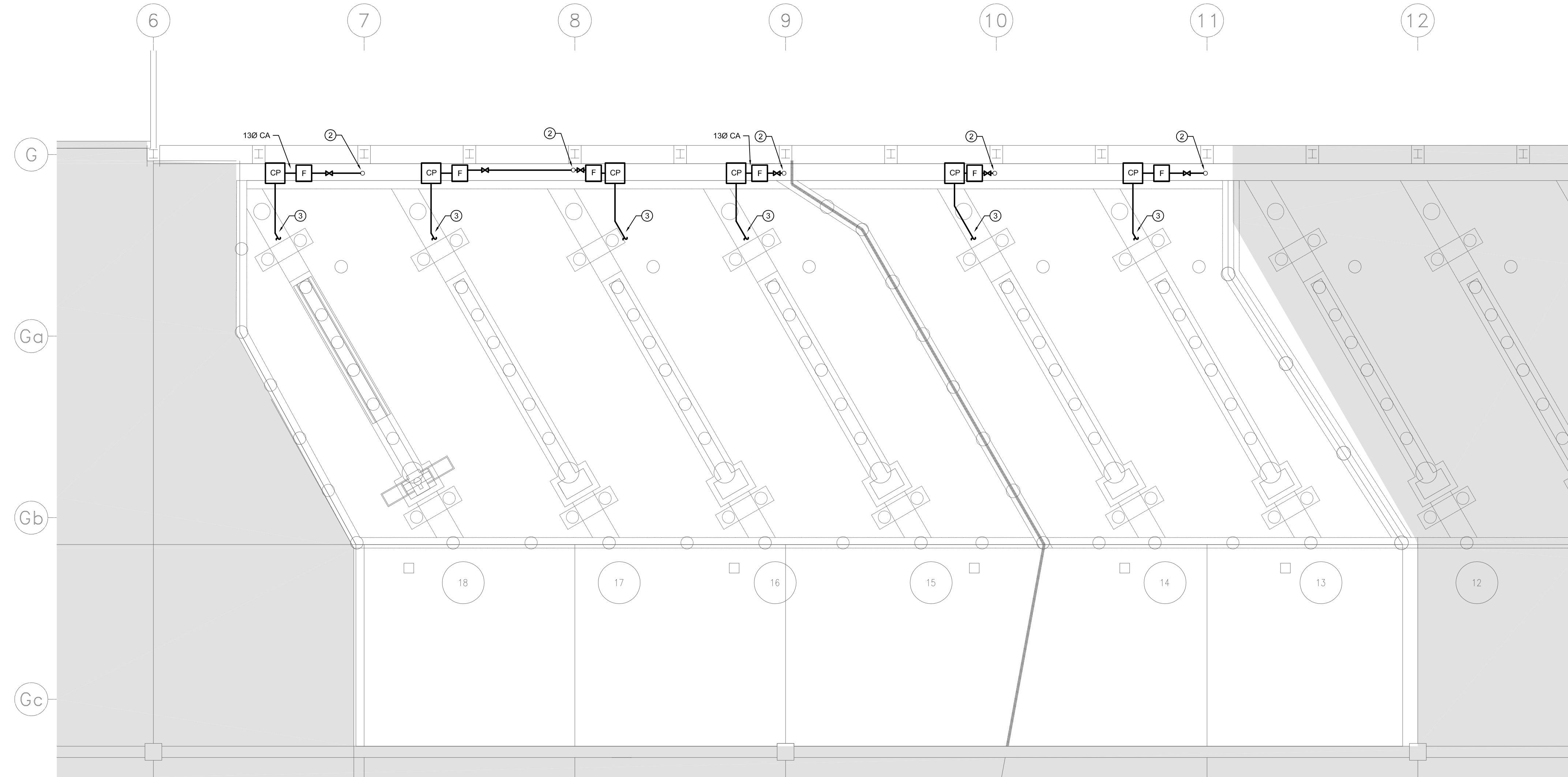


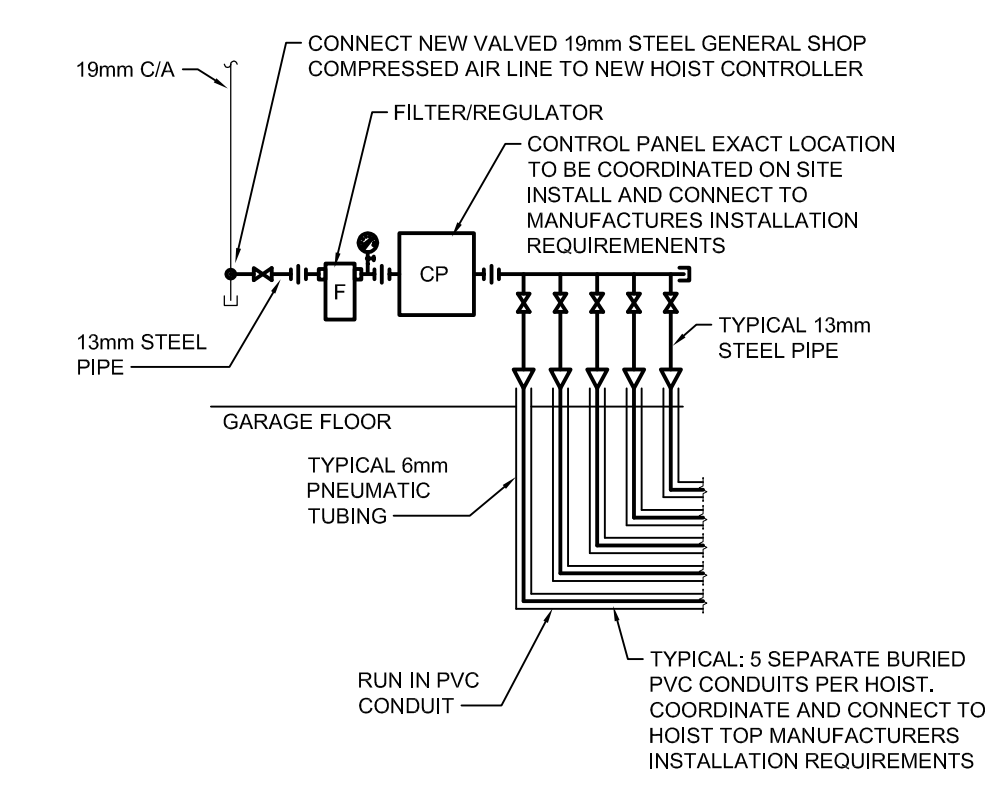
**1 MAIN FLOOR PLAN - MECHANICAL - NEW CONSTRUCTION**  
 M1.1 SCALE: 1:300



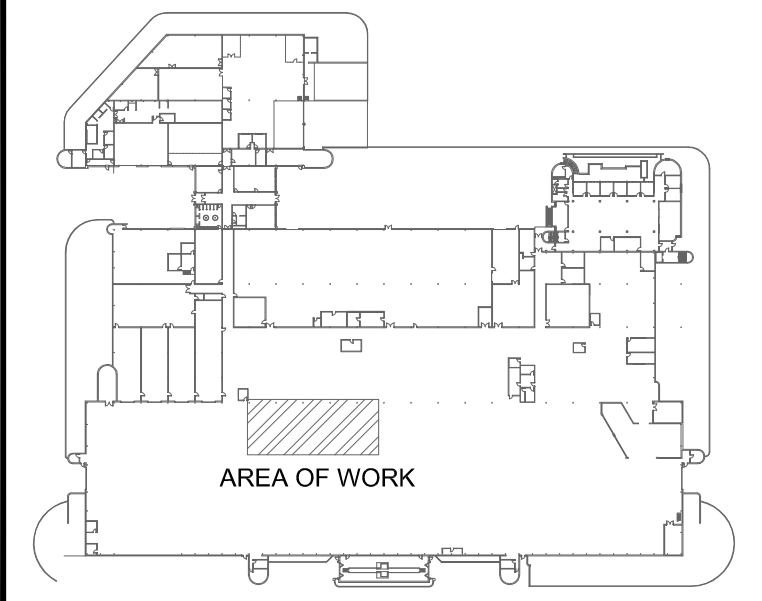
**2 PARTIAL MAIN FLOOR PLAN - COMPRESSED AIR - NEW CONSTRUCTION**  
 M1.1 SCALE: 1:100

**COMPRESSED AIR KEY NOTES**

- EXISTING COMPRESSED AIR PLANT.
- EXISTING 19mm COMPRESSED AIR DROPS FROM GENERAL AIR SYSTEM.
- PROVIDE COMPRESSED AIR TO EACH HOIST AS PER DETAIL 3/M1.1



**3 COMPRESSED AIR DETAIL**  
 M1.1 SCALE: NTS

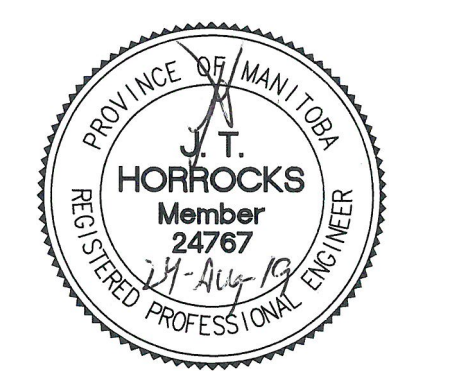


**KEYPLAN**  
 SCALE: NTS

The General Contractor shall check & verify all dimensions and report any errors or omissions to the designers.

No.	Date	Issue/Revision	By
1	24/08/19	ISSUED FOR CONSTRUCTION	JH
0	19/08/19	ISSUED FOR BID	JH

**ENGINEERS  
 GEOSCIENTISTS  
 MANITOBA**  
 Certificate of Authorization  
**SMS Engineering Ltd.**  
 No. 166



Consultant  
 770 Bradford Street  
 Winnipeg, Canada  
 T 204 775 0291  
 SMSeng.com  
 18-435-01



300-275 Carlton Street  
 Winnipeg, Manitoba R3C 5R6  
 T 204-943-7501  
 F 204-943-7507  
**Crosier Kilgour  
 & Partners Ltd.**  
 CONSULTING STRUCTURAL ENGINEERS

Project  
**WINNIPEG TRANSIT  
 GARAGE BUILDING**  
 HOIST REPLACEMENT  
 421 OSBORNE STREET  
 WINNIPEG, MANITOBA

Sheet Title  
**MAIN FLOOR PLAN - MECHANICAL -  
 NEW CONSTRUCTION**

File	2018-1170	Date	2019-06-10
Design	JH	Drawn	RNS

Revision	Sheet No.
<b>1</b>	<b>M1.1</b>