

NOTES:
 CONSTRUCTION STANDARDS
 TO BE CONSTRUCTED IN ACCORDANCE WITH MANITOBA HYDRO DISTRIBUTION AND SUBTRANSMISSION STANDARDS. LATEST REVISION. NO MAJOR CHANGE SHALL BE MADE WITHOUT APPROVAL OF THE DESIGN ENGINEER OR DELEGATE.
 SITE GRADING
 THE DEVELOPER IS RESPONSIBLE FOR GRADING OF THE SITE TO WITHIN +1.0 15M OF FINISHED GRADE PRIOR TO CONSTRUCTION COMMENCEMENT. BENCHMARKS ARE TO BE OBTAINED FROM THE DEVELOPER OR CONSULTANT.

AUTHORITY	NOTIFIED	NOT REQ'D	OBTAINED
DISTRICT	2019-03-12		
C.O.W MUNICIPAL	2019-03-12		
M.T.S.	2019-03-12		
GAS		X	
SHAW		X	
EASEMENTS		X	
COMMUNICATIONS		X	
S.C.C.		X	
DEPT. OF HIGHWAYS		X	

CONTACT	NAME	PHONE NUMBER	EMAIL ADDRESS
DESIGN	IAN MCCALLUM	470-3154	IMCCALLUM@HYDRO.MB.CA
DESIGN ENGINEER	ERIC WICKSTROM	770-2410	EWICKSTROM@HYDRO.MB.CA
PORTFOLIO PM	DARIN WACH	451-2617	DWACH@HYDRO.MB.CA
ENERGY SERVICE ADVISOR	DARRYL STOCHI	918-0341	DSTOCHI@HYDRO.MB.CA
UG CONSTRUCTION	BILL AMMETER	365-7019	BAMMETER@HYDRO.MB.CA
OH CONSTRUCTION	WAYNE IRELAND	771-5212	WIRELAND@HYDRO.MB.CA
HYDRO GAS			
SHAW			
MTS			
CONSUMER REPRESENTATIVE	MARK HILDEBRAND	391-5332	MHILDEBRAND@WNNPEG.CA
DISTRICT ENG TECH	ROB DENEKA	365-5987	RDENEKA@HYDRO.MB.CA

LOCATION	LUMINAIRE	TYPE	HEIGHT	AVG. SPAC.	AVG. SPAC. (MAX/MIN)	AVE. SPACING
FERMOR AVE	150-240W LED	II	13.8m	9.09	3.40	82.5

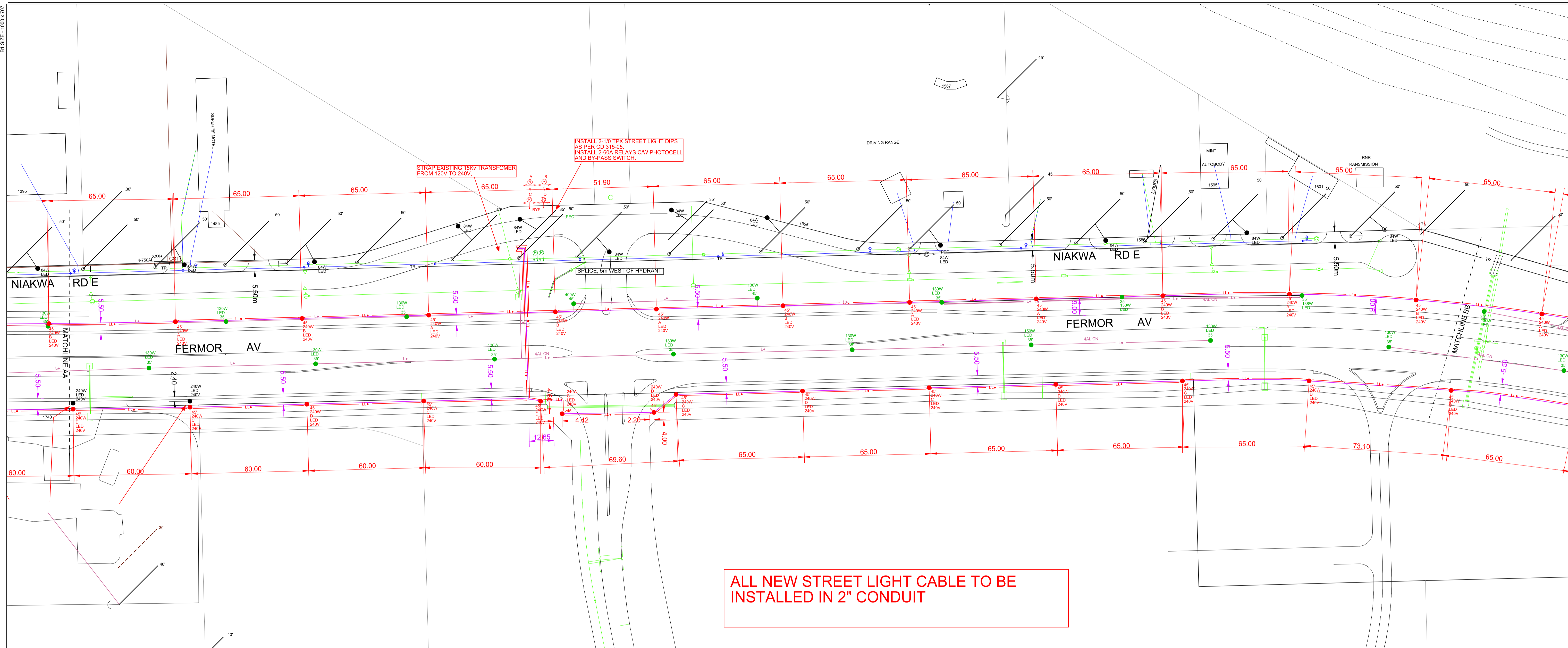
INSTALLED			
Quantity	Fixture Type	Wattage	Pole Type
3	LED	150	EXCLUSIVE
52	LED	240	EXCLUSIVE
2	HPS	1000	EXCLUSIVE
8	LED	60W	EXCLUSIVE

REMOVED			
Quantity	Fixture Type	Wattage	Pole Type
39	LED	150	EXCLUSIVE
4	HPS	250	EXCLUSIVE
1	HPS	400	EXCLUSIVE
2	HPS	1000	EXCLUSIVE

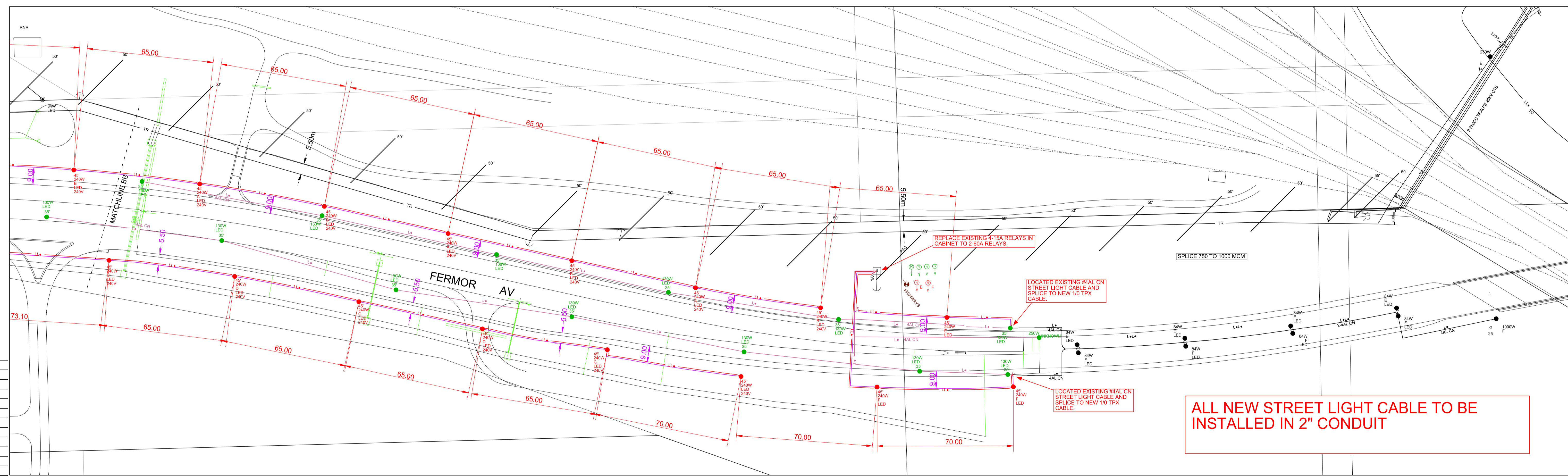
REEL NUMBER	MANUFACTURER	MANUFACTURE DATE

PRELIMINARY NOT TO BE USED FOR CONSTRUCTION

INFORMATION PERTAINING TO THE SIZE, TYPE AND LOCATION OF MANITOBA HYDRO FACILITIES AND INSTALLATIONS IS ILLUSTRATIVE AND SHOULD NOT BE RELIED ON FOR THE PURPOSES OF ANY ACTIVITY BEING CONDUCTED AT OR NEAR THE IDENTIFIED HYDRO INSTALLATIONS. ALL LOCATIONS AND EQUIPMENT MUST BE VERIFIED BY APPROPRIATE HYDRO DISTRICT OFFICES PRIOR TO ANY PHYSICAL ACTIVITY BEING UNDERTAKEN AT OR NEAR HYDRO INSTALLATIONS.



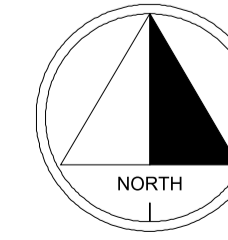
ALL NEW STREET LIGHT CABLE TO BE INSTALLED IN 2" CONDUIT



ALL NEW STREET LIGHT CABLE TO BE INSTALLED IN 2" CONDUIT

CONTACT "CLICK BEFORE YOU DIG MANITOBA" AT ClickBeforeYouDigMB.com
THREE FULL WORKING DAYS
 PRIOR TO CONSTRUCTION FOR LOCATION OF EXISTING WATER, WASTEWATER, LAND DRAINAGE UTILITIES AND MANITOBA HYDRO UTILITIES

THIS IS A PRINT OF A DOCUMENT THAT HAS BEEN ELECTRONICALLY AUTHENTICATED WITH TECHNOLOGY AUTHORIZED BY THE EGM. THE ORIGINAL IS IN ELECTRONIC FORM.



NO.	DATE	REVISIONS	BY	CHKD.	APP.

DRAWING NUMBER	REFERENCE DRAWINGS

AREA NUMBER	MANITOBA HYDRO DISTRIBUTION PLANNING & DESIGN
5401	WO # P-31565 NETWORK # 4305687
STATION NUMBER	DISTRICT: TRANSCONA
1436	FERMOR AVE
FEEDER NUMBER	NEW ROADWAY LIGHTING BETWEEN LAGIMOIDERE BLVD. AND THE CNR TRACKS
P78	
SYSTEM VOLTAGE	13.8/24KV
SCALE	1:1000
DATE	2019-02-11