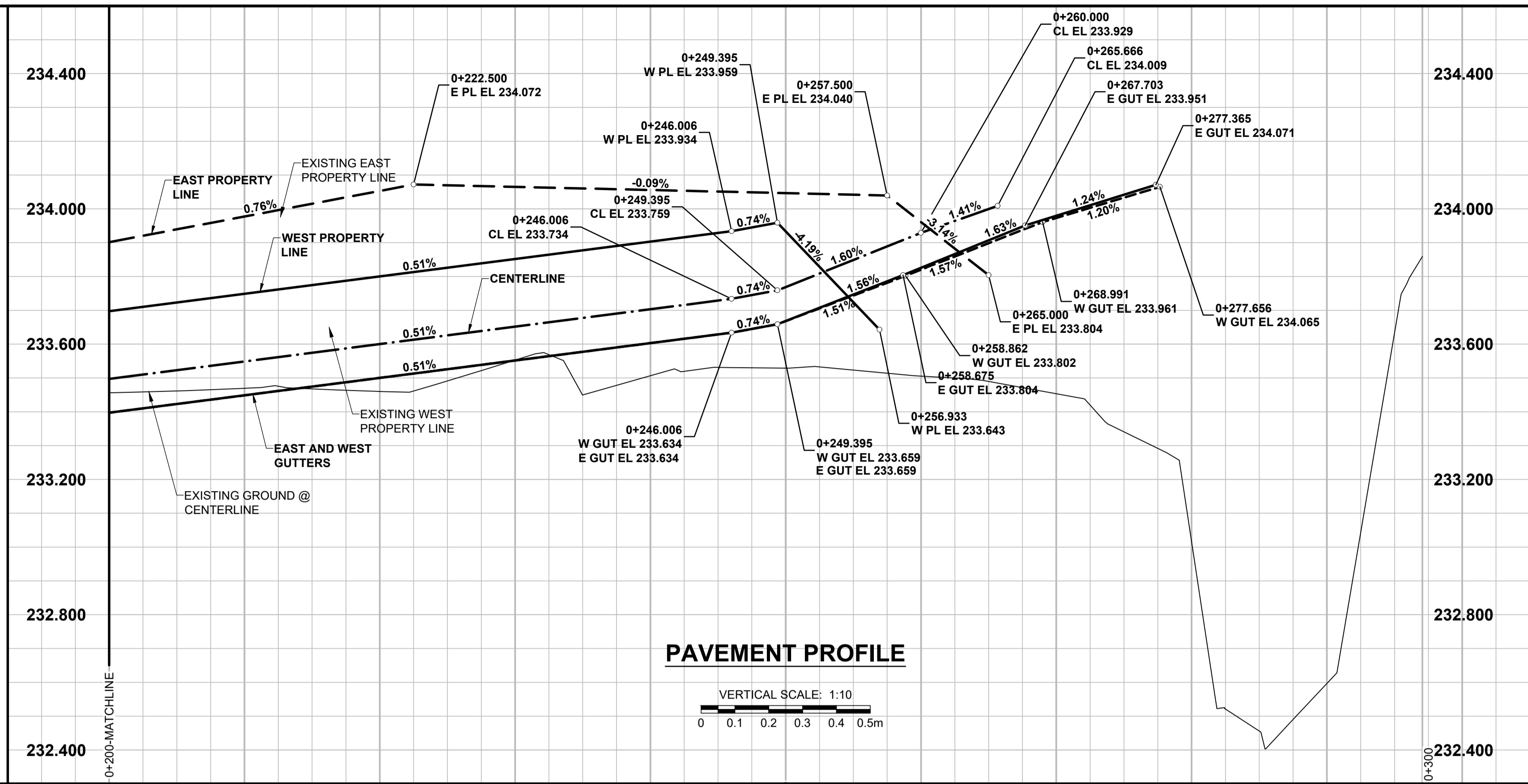
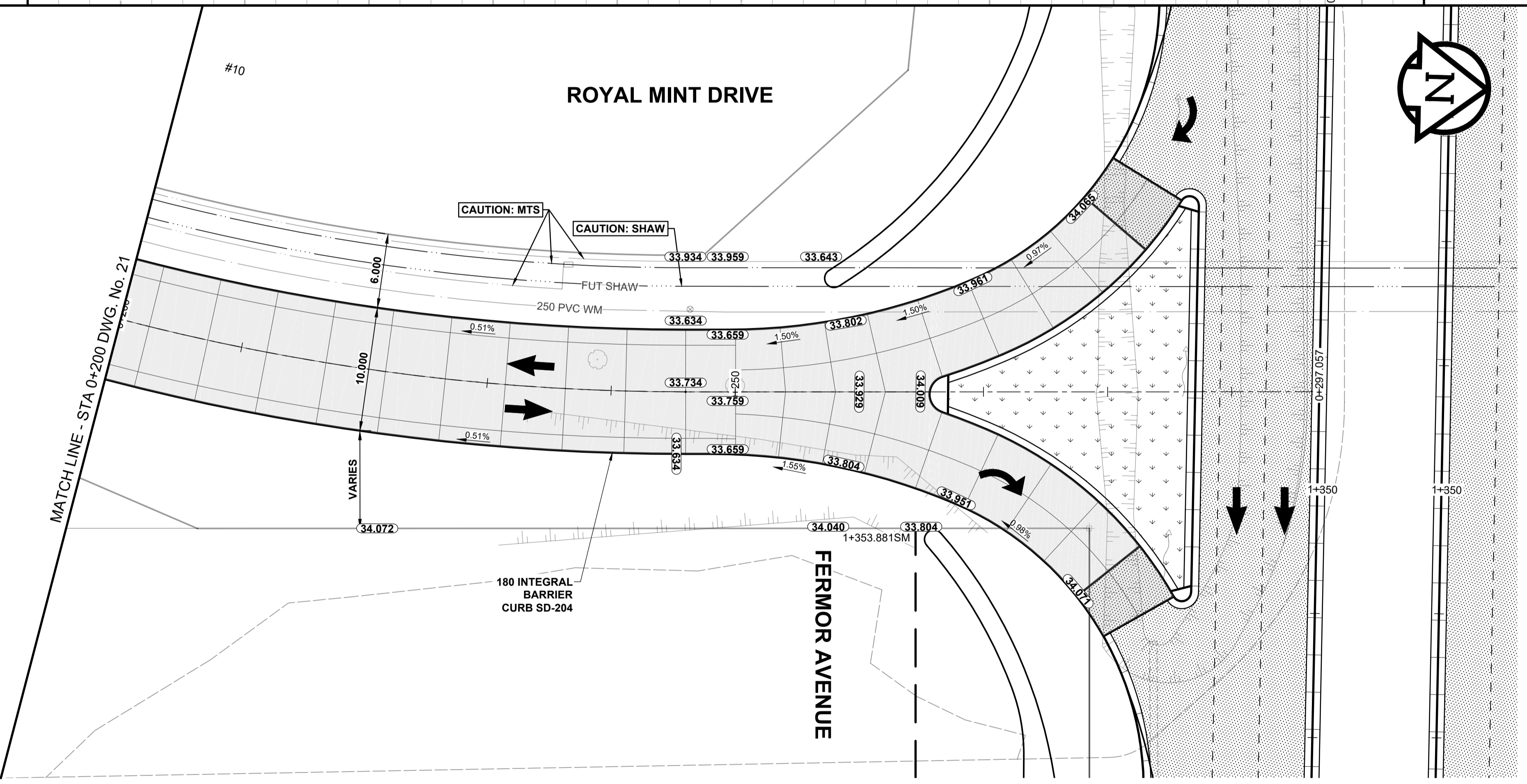


ISO A1 - 564mm x 841mm



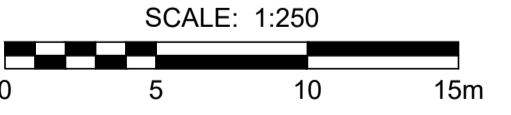
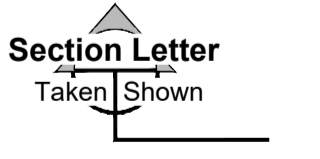
CHAINAGE ALONG CENTERLINE



SEE DWG No. 12 FOR CONTINUATION OF FERMOR AVENUE PAVEMENT WORKS

- NOTES
1. ADJUST MH'S, CB RIMS, WV'S AND HYD'S TO NEW GRADES.
2. MODIFIED BARRIER CURB TO BE CONSTRUCTED AT ALL INTERSECTION RADII, BACK LANE RADII AND BULLNOSES.
3. CONTRACTOR TO CONFIRM THE LOCATION OF ALL UTILITIES/SERVICES IN THE FIELD PRIOR TO CONSTRUCTION.
4. ADD 200.000m TO ABBREVIATED ELEVATIONS TO OBTAIN GEODETIC ELEVATIONS.
5. CB SD-024 OFFSETS ARE DIMENSIONED TO BOC. CB SD-025 OFFSETS ARE DIMENSIONED O.C.
6. ALL DIMENSIONS TO BACK OF CURB AND THEORETICAL BACK OF CURB
7. ALL WORK AND MATERIALS TO BE IN ACCORDANCE WITH LATEST REVISION OF THE CITY OF WINNIPEG STANDARD CONSTRUCTION SPECIFICATIONS.
8. ALL BOULEVARDS TO BE SEEDED UNLESS NOTED OTHERWISE. LIMITS TO BE IDENTIFIED IN THE FIELD BY THE CONTRACT ADMINISTRATOR.
9. INSTALL 6.000m OF 150mm SUBDRAIN TO CATCH BASINS IN BOTH DIRECTIONS PARALLEL TO ROADWAY AS PER SD-045 AND CAP ENDS.
10. CB LEADS TO BE INSTALLED AT MIN 1.0% SLOPE OR AS DIRECTED BY THE CONTRACT ADMINISTRATOR.
11. ISOLATE MISCELLANEOUS ITEMS IN NEW CONCRETE WORKS AS PER SD-228C.
12. LEGAL PLAN AND UNDERGROUND INFORMATION FROM CITY OF WINNIPEG LBIS.

SECTION LEGEND



METRIC
WHOLE NUMBERS INDICATE MILLIMETRES
DECIMALIZED NUMBERS INDICATE METRES

Legend table with columns for Gas, Hydro, CATV, Traffic Signals, Land Drainage Sewer, Sanitary/Combined Sewer, CB Lead, Water Main, Subdrain, Ditch, Manhole, Catch Basin, Curbs, Trees, Test Holes, Property Lines, Survey Bars, Fences, Pavement types, and Underground Structures.

LOCATION APPROVED UNDERGROUND STRUCTURES
NOTE: LOCATION OF UNDERGROUND STRUCTURES AS SHOWN ARE BASED ON THE BEST INFORMATION AVAILABLE BUT NO GUARANTEE IS GIVEN THAT ALL EXISTING UTILITIES ARE SHOWN OR THAT THE GIVEN LOCATIONS ARE EXACT. CONFIRMATION OF EXISTENCE AND EXACT LOCATION OF ALL SERVICES MUST BE OBTAINED FROM THE INDIVIDUAL UTILITIES BEFORE PROCEEDING WITH CONSTRUCTION.

Table with columns for Issue (C, B, A), Date, and By/For (JGK, MORRISON HERSHFIELD).

MORRISON HERSHFIELD logo and design information: DESIGNED BY JGK, CHECKED BY RPB, DRAWN BY DID, APPROVED BY BWB, RELEASED FOR CONSTRUCTION N/A, DATE 19/03/22.

PROFESSIONAL'S SEAL: J.G. KENNEDY, Member 22326, REGISTERED PROFESSIONAL ENGINEER.

THE CITY OF WINNIPEG PUBLIC WORKS DEPARTMENT ENGINEERING DIVISION. 2019/2020 REGIONAL STREET RENEWAL PROGRAM. FERMOR AVENUE FROM LAGIMODIERE BOULEVARD TO PLESSIS ROAD (CITY BOUNDARY). PLAN AND PROFILES. STA 0+200 TO FERMOR AVENUE. SHEET 22 OF 63. DRAWING No. 22.

P:\2018\180419100-20192020 Regional St Renew Fermor\09_CAD\07_Sheets\1804191-22-Fermor-PP-22.dwg