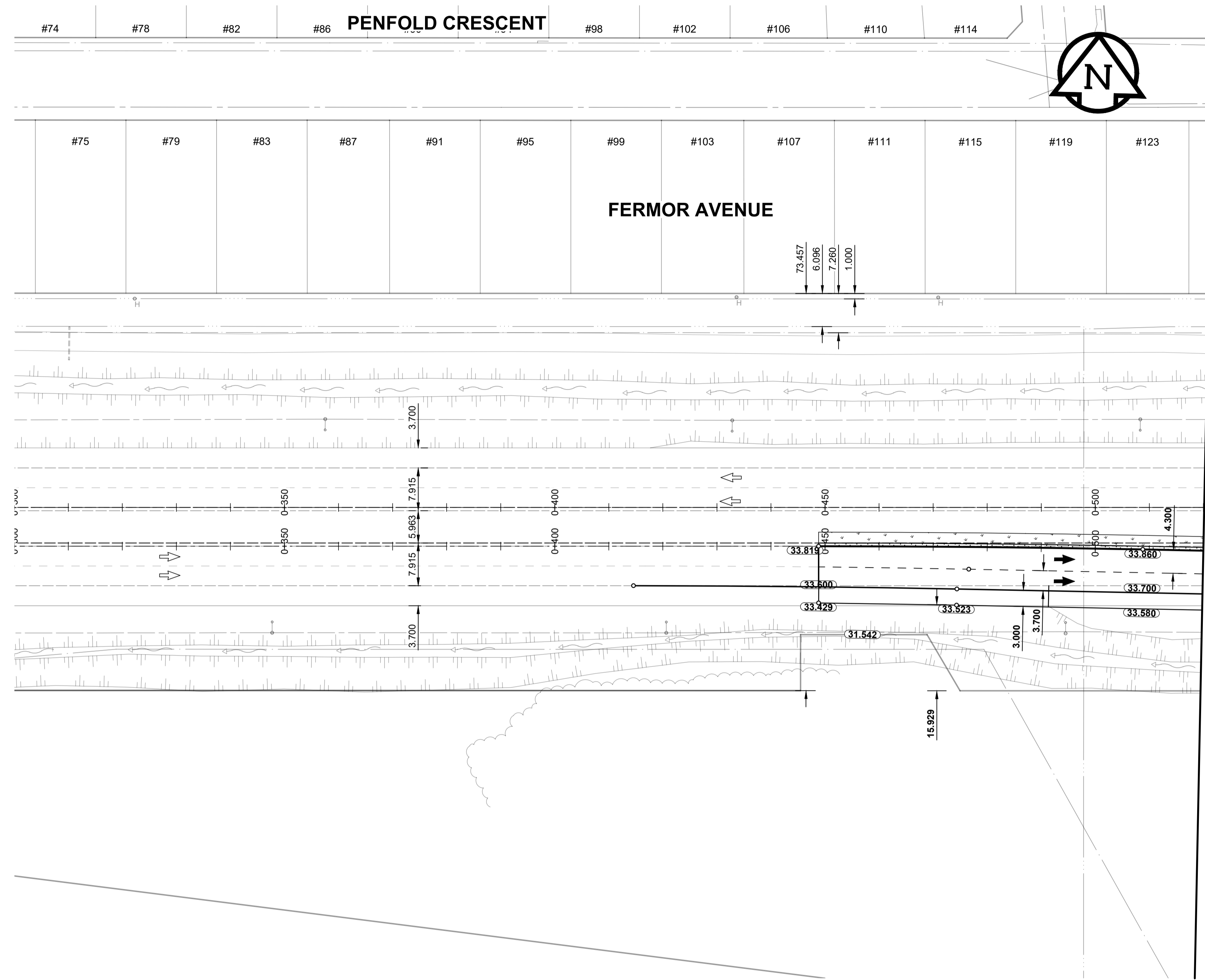


P:\2018\180419100-20192020 Regional St Renew FERMOR\09_CAD\07_Sheets\1804191-24-Fermor-GR-24.dwg
 Last Saved: 21/4/2019 11:51 AM by DDeszpod
 Plotted: 3/22/2019 8:30 AM by Daniel Deszpod
 ISO A1 - 594mm x 841mm



MATCH LINE - STA 0+520 SM DWG. No.25

- NOTES**
- ADJUST MH'S, CB RIMS, WV'S AND HYD'S TO NEW GRADES.
 - MODIFIED BARRIER CURB TO BE CONSTRUCTED AT ALL INTERSECTION RADI, BACK LANE RADI AND BULLNOSES.
 - CONTRACTOR TO CONFIRM THE LOCATION OF ALL UTILITIES/SERVICES IN THE FIELD PRIOR TO CONSTRUCTION.
 - ADD 200.000m TO ABBREVIATED ELEVATIONS TO OBTAIN GEODETIC ELEVATIONS.
 - CB SD-024 OFFSETS ARE DIMENSIONED TO BOC. CB SD-025 OFFSETS ARE DIMENSIONED O/C.
 - ALL DIMENSIONS TO BACK OF CURB AND THEORETICAL BACK OF CURB.
 - ALL WORK AND MATERIALS TO BE IN ACCORDANCE WITH LATEST REVISION OF THE CITY OF WINNIPEG STANDARD CONSTRUCTION SPECIFICATIONS.
 - ALL BOULEVARDS TO BE SEEDED UNLESS NOTED OTHERWISE. LIMITS TO BE IDENTIFIED IN THE FIELD BY THE CONTRACT ADMINISTRATOR.
 - INSTALL 6.000m OF 150mm SUBDRAIN TO CATCH BASINS IN BOTH DIRECTIONS PARALLEL TO ROADWAY AS PER SD-045 AND CAP ENDS.
 - CB LEADS TO BE INSTALLED AT MIN 1.0% SLOPE OR AS DIRECTED BY THE CONTRACT ADMINISTRATOR.
 - ISOLATE MISCELLANEOUS ITEMS IN NEW CONCRETE WORKS AS PER SD-228C.
 - LEGAL PLAN AND UNDERGROUND INFORMATION FROM CITY OF WINNIPEG LBIS.

CAUTION: LARGE DIAMETER WATERMAINS
 (1370 INTERCONNECTION AQUEDUCT AND 600 FEEDERMAIN LDWMS) CONCRETE DEMOLITION AND REMOVAL WITHIN 3.0 METERS HORIZONTALLY OF THE LARGE DIAMETER WATERMAIN SHALL BE COMPLETED BY SAWCUTTING AND REMOVAL, OR BY THE USE OF HAND HELD JACKHAMMERS. USE OF MACHINE MOUNTED CONCRETE BREAKERS ABOVE THE LARGE DIAMETER WATERMAIN SHALL NOT BE PERMITTED. DO NOT OPERATE VIBRATORY EQUIPMENT OVER OR WITH 3.0 METERS OF THE LARGE DIAMETER WATERMAIN CENTERLINE.

REFERENCE LEGEND
 -SEE DRAWING 8 FOR PAVING
 -SEE DRAWING 34 FOR PROFILES

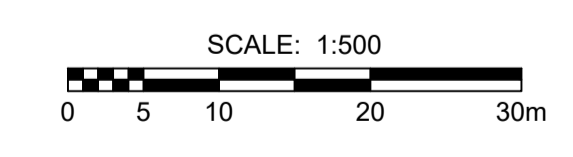
METRIC
 WHOLE NUMBERS INDICATE MILLIMETRES
 DECIMALIZED NUMBERS INDICATE METRES

SECTION LEGEND



ENGINEERS GEOSCIENTISTS MANITOBA
 Certificate of Authorization
 MORRISON HERSHFIELD
 No. 1736

TENDER No.8-2019



EXISTING	LEGEND - PLAN	NEW	EXISTING	LEGEND - PLAN	NEW	EXISTING	LEGEND - PLAN	NEW	
	GAS		MANHOLE		CONCRETE PAVEMENT		CONC SIDEWALK / MEDIAN		ASPHALT PAVEMENT
	MTS / PEDESTAL		CATCH BASIN / CATCH PIT		ASPHALT PAVT WIDENING		PAVING STONE		GRAVEL
	HYDRO / CABINET		CURB INLET WITH BOX		RAMP CURB		PLANING / REMOVAL		
	CATV / FIBRE OPTIC		TREE						
	TRAFFIC SIGNALS / PIT		TEST HOLE						
	LAND DRAINAGE SEWER		PROPERTY LINE						
	SANITARY/COMBINED SEWER		SURVEY BAR						
	CB LEAD / SSP / DCP		FENCE						
	WATER MAIN		BOC / EDGE OF PAVEMENT						
	SUBDRAIN		ELEVATION (33.333)						
	DITCH		TRAFFIC SIGN						

LOCATION APPROVED
 UNDERGROUND STRUCTURES

DATE _____

NOTE:
 LOCATION OF UNDERGROUND STRUCTURES AS SHOWN ARE BASED ON THE BEST INFORMATION AVAILABLE BUT NO GUARANTEE IS GIVEN THAT ALL EXISTING UTILITIES ARE SHOWN OR THAT THE GIVEN LOCATIONS ARE EXACT. CONFIRMATION OF EXISTENCE AND EXACT LOCATION OF ALL SERVICES MUST BE OBTAINED FROM THE INDIVIDUAL UTILITIES BEFORE PROCEEDING WITH CONSTRUCTION.

No.	REVISIONS	DATE	BY
C	ISSUED FOR TENDER	19/03/22	RPB
B	ISSUED FOR CLIENT REVIEW	19/02/15	RPB
A	ISSUED FOR 66% CLIENT REVIEW	18/12/21	RPB

MORRISON HERSHFIELD

DESIGNED BY: WRJ
 CHECKED BY: RPB
 DRAWN BY: DID
 APPROVED BY: BWB
 RELEASED FOR CONSTRUCTION: N/A
 DATE: 19/03/22

PROFESSIONAL'S SEAL
 PROVINCE OF MANITOBA
 REGISTERED PROFESSIONAL ENGINEER
 R.P. BRUCE
 CONSULTANT FILE NAME: 1804191-24-Fermor-GR-24.dwg

THE CITY OF WINNIPEG
 PUBLIC WORKS DEPARTMENT
 ENGINEERING DIVISION

2019/2020 REGIONAL STREET RENEWAL PROGRAM
FERMOR AVENUE
 FROM LAGIMODIERE BOULEVARD
 TO PLESSIS ROAD (CITY BOUNDARY)

GRADING
 FERMOR AVENUE
 STA 0+300 SM TO STA 0+520 SM

CITY DRAWING NUMBER: P-3501-24
 SHEET 24 OF 63
 DRAWING No. **24**