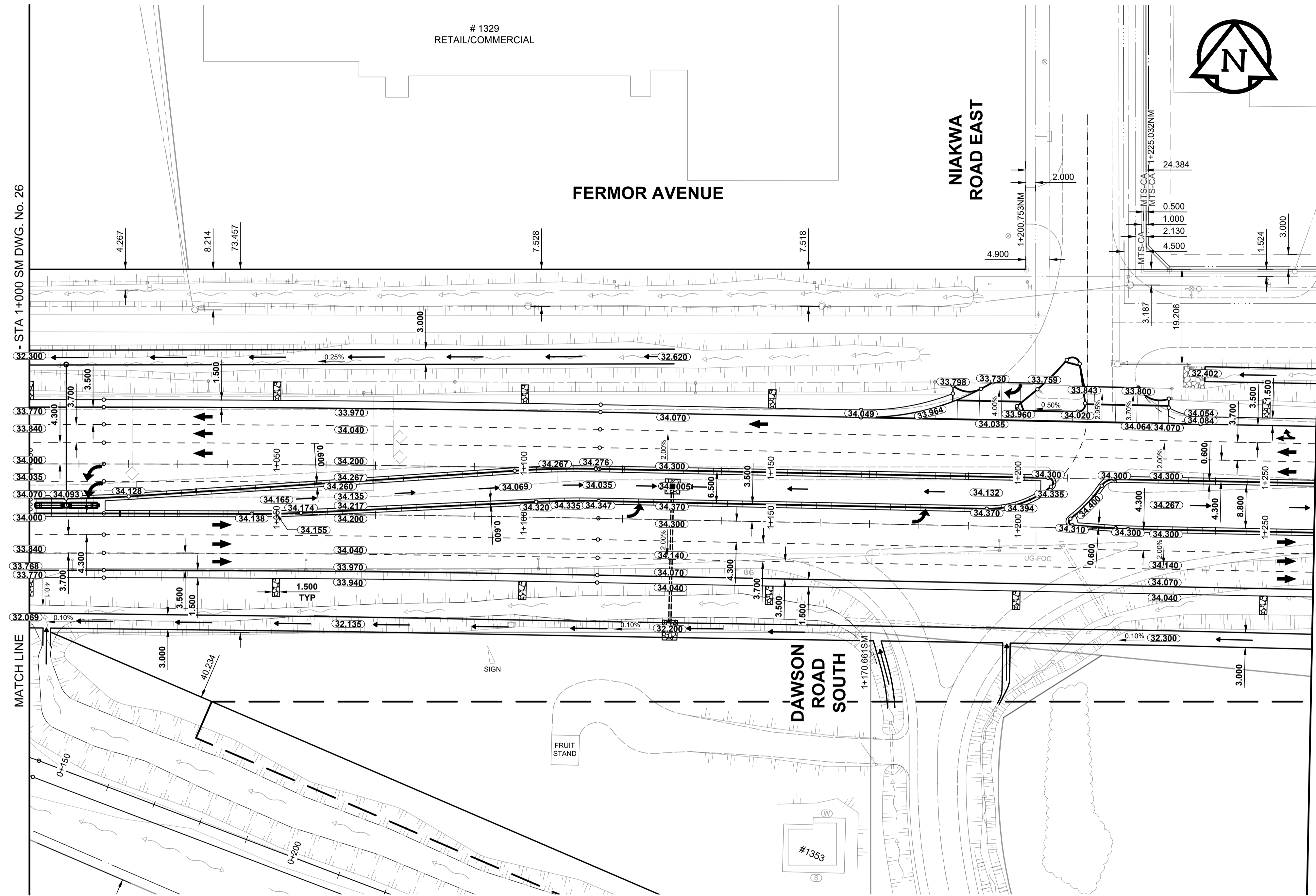


P:\2018\180419100-20192020 Regional St Renewal\Fermor\09_CAD\07_Sheets\1804191-27-Fermor-GR-27.dwg
 Last Saved: 21/12/2019 2:40 PM by DDozgod
 Plotted: 3/22/2020 8:32 AM by Daniel Dozgod
 ISO A1 - 594mm x 841mm



- NOTES**
1. ADJUST MH'S, CB RIMS, WV'S AND HYD'S TO NEW GRADES.
 2. MODIFIED BARRIER CURB TO BE CONSTRUCTED AT ALL INTERSECTION RADI, BACK LANE RADI AND BULLNOSES.
 3. CONTRACTOR TO CONFIRM THE LOCATION OF ALL UTILITIES/SERVICES IN THE FIELD PRIOR TO CONSTRUCTION.
 4. ADD 200.000m TO ABBREVIATED ELEVATIONS TO OBTAIN GEODETIC ELEVATIONS.
 5. CB SD-024 OFFSETS ARE DIMENSIONED TO BOC. CB SD-025 OFFSETS ARE DIMENSIONED O.C.
 6. ALL DIMENSIONS TO BACK OF CURB AND THEORETICAL BACK OF CURB.
 7. ALL WORK AND MATERIALS TO BE IN ACCORDANCE WITH LATEST REVISION OF THE CITY OF WINNIPEG STANDARD CONSTRUCTION SPECIFICATIONS.
 8. ALL BOULEVARDS TO BE SEEDED UNLESS NOTED OTHERWISE. LIMITS TO BE IDENTIFIED IN THE FIELD BY THE CONTRACT ADMINISTRATOR.
 9. INSTALL 6.000m OF 150mm SUBDRAIN TO CATCH BASINS IN BOTH DIRECTIONS PARALLEL TO ROADWAY AS PER SD-045 AND CAP ENDS.
 10. CB LEADS TO BE INSTALLED AT MIN 1.0% SLOPE OR AS DIRECTED BY THE CONTRACT ADMINISTRATOR.
 11. ISOLATE MISCELLANEOUS ITEMS IN NEW CONCRETE WORKS AS PER SD-228C.
 12. LEGAL PLAN AND UNDERGROUND INFORMATION FROM CITY OF WINNIPEG LBS.

REFERENCE LEGEND
 -SEE DRAWING 11 FOR PAVING
 -SEE DRAWING 37 FOR PROFILES

SECTION LEGEND



METRIC
 WHOLE NUMBERS INDICATE MILLIMETRES
 DECIMALIZED NUMBERS INDICATE METRES

	GAS		MANHOLE		CONCRETE PAVEMENT
	MTS / PEDESTAL		CATCH BASIN / CATCH PIT		CONC SIDEWALK / MEDIAN
	HYDRO / CABINET		CURB INLET WITH BOX		ASPHALT PAVEMENT
	CATV / FIBRE OPTIC		TREE		ASPHALT PAVT WIDENING
	TRAFFIC SIGNALS / PIT		TEST HOLE		PAVING STONE
	LAND DRAINAGE SEWER		PROPERTY LINE		GRAVEL
	SANITARY/COMBINED SEWER		SURVEY BAR		RAMP CURB
	CB LEAD / SSP / DCP		FENCE		PLANING / REMOVAL
	WATER MAIN		BOC / EDGE OF PAVEMENT		
	SUBDRAIN		ELEVATION (33.333)		
	DITCH		TRAFFIC SIGN		
EXISTING	LEGEND - PLAN	NEW	LEGEND - PLAN	NEW	LEGEND - PLAN

LOCATION APPROVED UNDERGROUND STRUCTURES

SUPR, U/G STRUCTURES COMMITTEE DATE _____
NOTE: LOCATION OF UNDERGROUND STRUCTURES AS SHOWN ARE BASED ON THE BEST INFORMATION AVAILABLE BUT NO GUARANTEE IS GIVEN THAT ALL EXISTING UTILITIES ARE SHOWN OR THAT THE GIVEN LOCATIONS ARE EXACT. CONFIRMATION OF EXISTENCE AND EXACT LOCATION OF ALL SERVICES MUST BE OBTAINED FROM THE INDIVIDUAL UTILITIES BEFORE PROCEEDING WITH CONSTRUCTION.

GBM - 55-015	
ELEV - 233.170	
C ISSUED FOR TENDER 19/03/22 RPB	
B ISSUED FOR CLIENT REVIEW 19/02/15 RPB	
A ISSUED FOR 66% CLIENT REVIEW 18/12/21 RPB	
No.	REVISIONS

MORRISON HERSHFIELD

DESIGNED BY	WRJ	CHECKED BY	RPB
DRAWN BY	DID	APPROVED BY	BWB
DATE	19/03/22	RELEASED FOR CONSTRUCTION	N/A
HOR SCALE	1:500	DATE	
VERT SCALE	1:20		

PROFESSIONAL'S SEAL
 PROVINCE OF MANITOBA

 REGISTERED PROFESSIONAL ENGINEER
 CONSULTANT FILE NAME
 1804191-27-Fermor-GR-27.dwg

THE CITY OF WINNIPEG
PUBLIC WORKS DEPARTMENT
ENGINEERING DIVISION
 2019/2020 REGIONAL STREET RENEWAL PROGRAM
FERMOR AVENUE
FROM LAGIMODIERE BOULEVARD TO PLESSIS ROAD (CITY BOUNDARY)
GRADING
FERMOR AVENUE
STA 1+000 SM TO STA 1+260 SM

CITY DRAWING NUMBER: P-3501-27
 SHEET 27 OF 63
 DRAWING No. 27

TENDER No. 8-2019

