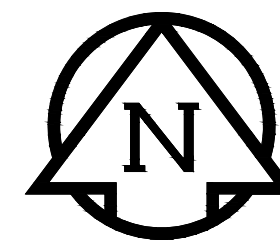
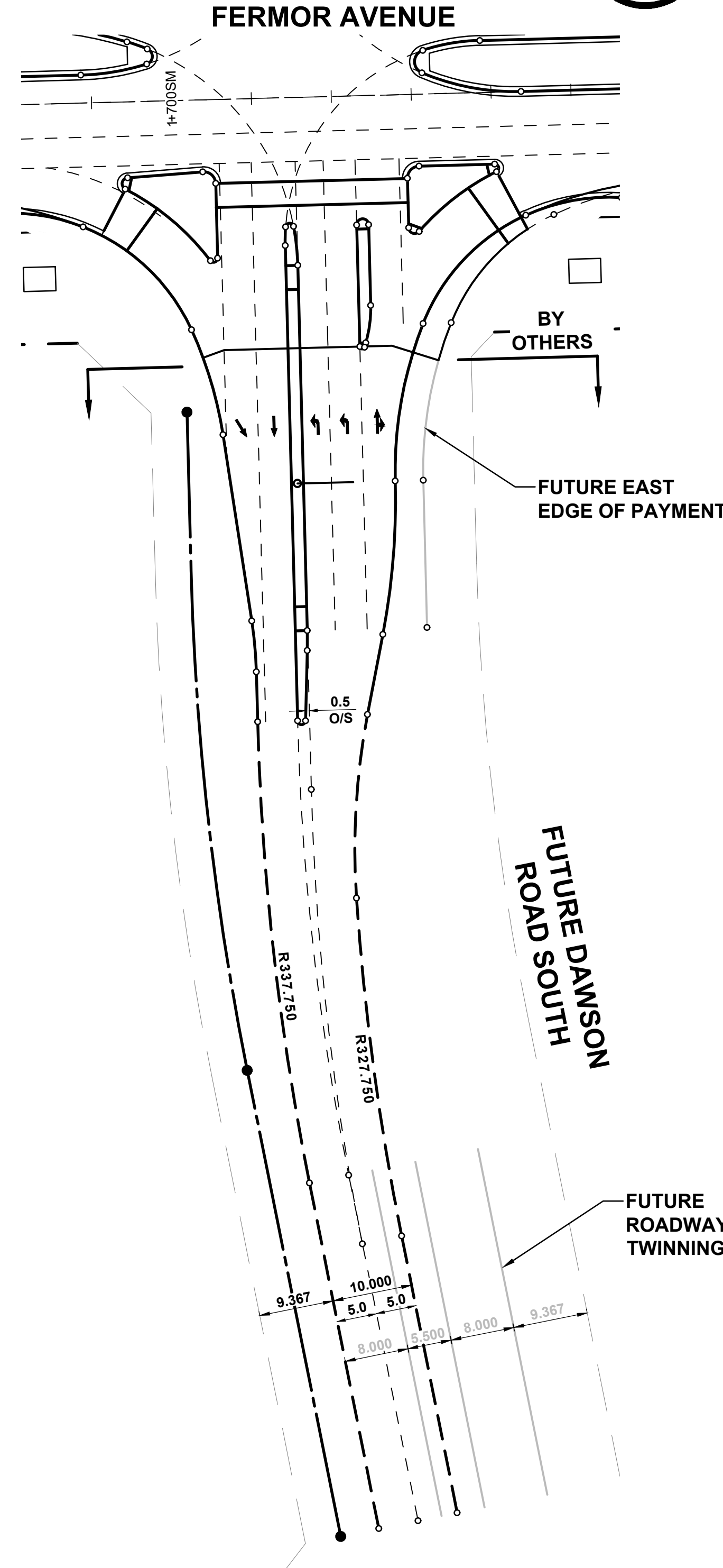
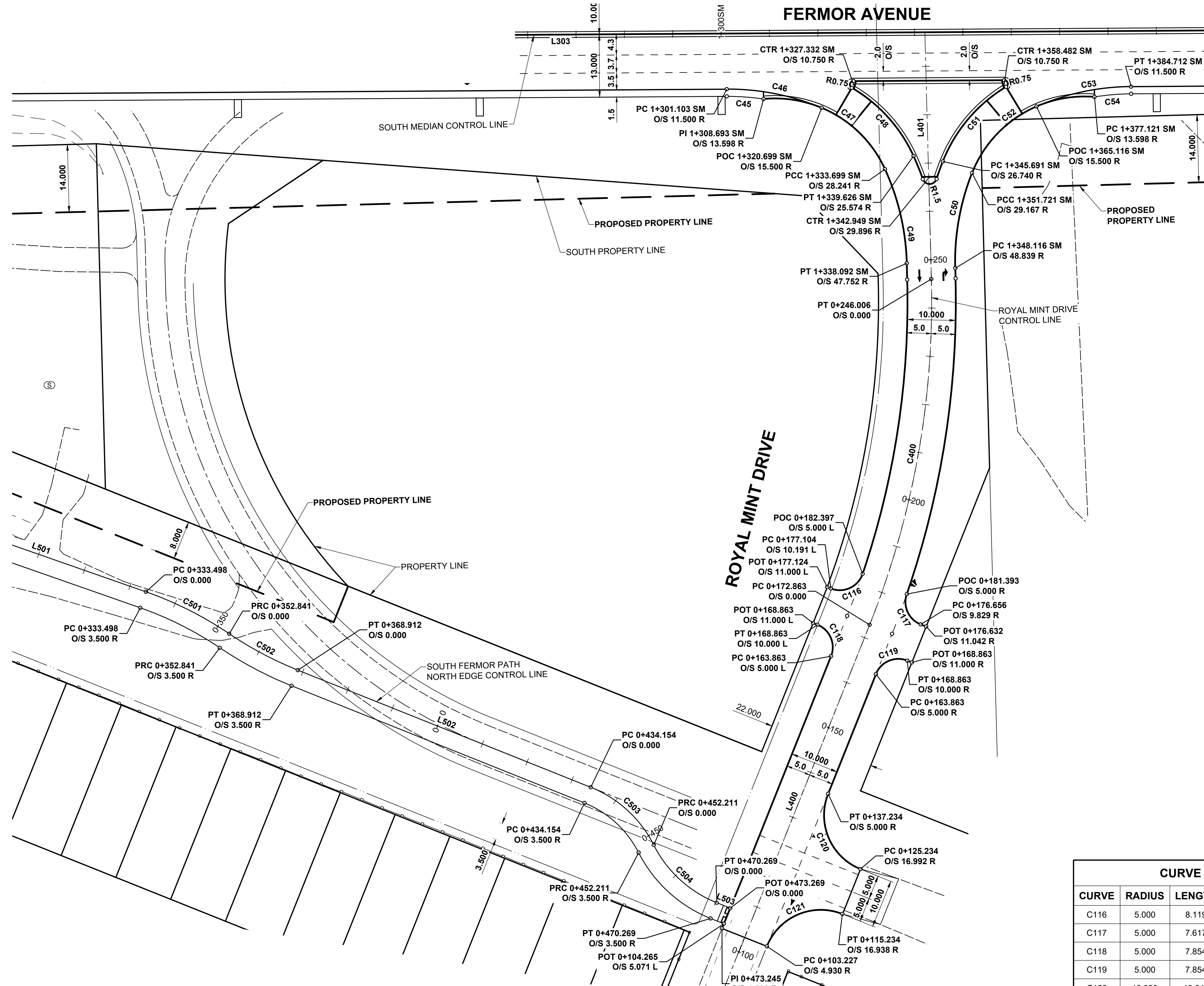
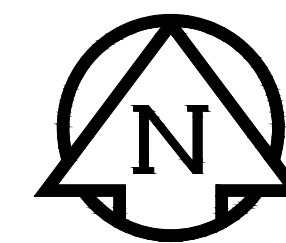


FOR CONTINUATION SEE DWG No. 4



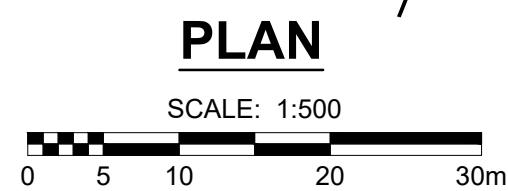
FOR CONTINUATION SEE DWG No. 5



CURVE TABLE				
CURVE	RADIUS	LENGTH	DELTA	TANGENT
C116	5.000	8.119	93°02'05"	5.272
C117	5.000	7.617	87°17'06"	4.769
C118	5.000	7.854	90°00'00"	5.000
C119	5.000	7.854	90°00'00"	5.000
C120	12.000	18.841	89°57'35"	11.992
C121	12.000	18.865	90°04'29"	12.016

ROYAL MINT DR - CENTRELINE - CONTROL LINE GEOMETRY										
NUMBER	LENGTH	RADIUS	DELTA	TANGENT	START STATION	NORTHING	EASTING	END STATION	NORTHING	EASTING
L400	72.863				0+100.000	9757.910	10074.388	0+172.863	9825.580	10101.405
C400	73.143	180.000	23°16'55"	37.083	0+172.863	9825.580	10101.405	0+246.006	9897.089	10114.173
L401	51.051				0+246.006	9897.089	10114.173	0+297.057	9948.122	10112.821

PATH - NORTH EDGE - CONTROL LINE GEOMETRY										
NUMBER	LENGTH	RADIUS	DELTA	TANGENT	START STATION	NORTHING	EASTING	END STATION	NORTHING	EASTING
L501	188.378				0+145.120	9894.669	9773.980	0+333.498	9832.391	9951.766
C501	19.343	75.000	14°46'37"	9.725	0+333.498	9832.391	9951.766	0+352.841	9823.726	9968.999
C502	16.071	75.000	12°16'39"	8.066	0+352.841	9823.726	9968.999	0+368.912	9816.210	9983.170
L502	65.242				0+368.912	9816.210	9983.170	0+434.154	9791.976	10043.744
C503	18.057	25.000	41°22'58"	9.442	0+434.154	9791.976	10043.744	0+452.211	9780.041	10056.770
C504	18.058	25.000	41°23'08"	9.443	0+452.211	9780.041	10056.770	0+470.269	9768.106	10069.798
L503	3.000				0+470.269	9768.106	10069.798	0+473.269	9766.992	10072.583



**LOCATION APPROVED**  
UNDERGROUND STRUCTURES

GBM 55-015  
ELEV 233.170

DESIGNED BY WRJ  
DRAWN BY DML  
DATE 19/03/22

PROFESSIONAL'S SEAL  
PROVINCE OF MANITOBA  
REGISTERED PROFESSIONAL ENGINEER  
R.P. BRUCE  
CONSULTANT FILE NAME  
1804191-7-Fermor-HG-7.dwg

THE CITY OF WINNIPEG  
PUBLIC WORKS DEPARTMENT  
ENGINEERING DIVISION  
2019/2020 REGIONAL STREET RENEWAL PROGRAM  
FERMOR AVENUE  
FROM LAGIMODIERE BOULEVARD  
TO PLESSIS ROAD (CITY BOUNDARY)  
HORIZONTAL GEOMETRY  
ROYAL MINT DRIVE & FUTURE DAWSON ROAD SOUTH

CITY DRAWING NUMBER P-3501-7  
SHEET 7 OF 63  
DRAWING No. 7

**METRIC**  
WHOLE NUMBERS INDICATE MILLIMETRES  
DECIMALIZED NUMBERS INDICATE METRES

**ENGINEERS GEOSCIENTISTS MANITOBA**  
Certificate of Authorization  
MORRISON HERSHFIELD  
No. 1736  
TENDER No. 8-2019

**MORRISON HERSHFIELD**

DESIGNED BY WRJ  
DRAWN BY DML  
DATE 19/03/22

CHECKED BY RPB  
APPROVED BY BWB  
DATE 19/03/22

HOR SCALE 1:500  
VERT SCALE N/A  
RELEASED FOR CONSTRUCTION N/A

PROFESSIONAL'S SEAL  
PROVINCE OF MANITOBA  
REGISTERED PROFESSIONAL ENGINEER  
R.P. BRUCE  
CONSULTANT FILE NAME  
1804191-7-Fermor-HG-7.dwg

**THE CITY OF WINNIPEG**  
PUBLIC WORKS DEPARTMENT  
ENGINEERING DIVISION  
2019/2020 REGIONAL STREET RENEWAL PROGRAM  
FERMOR AVENUE  
FROM LAGIMODIERE BOULEVARD  
TO PLESSIS ROAD (CITY BOUNDARY)  
HORIZONTAL GEOMETRY  
ROYAL MINT DRIVE & FUTURE DAWSON ROAD SOUTH

CITY DRAWING NUMBER P-3501-7  
SHEET 7 OF 63  
DRAWING No. 7