

CONSTRUCTION NOTES

1. MILL EXISTING ASPHALT AND CONSTRUCT NEW ASPHALT OVERLAY (TYPE 1A)
2. RENEW EXISTING BARRIER CURB (SD-203A, SD-205)
3. CONSTRUCT NEW CURB RAMP (SD-229D)
4. RENEW EXISTING CONCRETE SIDEWALK (SD-228A)
5. INSTALL NEW DETECTABLE WARNING SURFACE TILE (SD-229E)
6. RE-GRADE SIDEWALK BLOCKS
7. REMOVE EXISTING CONCRETE APPROACH AND RE-GRADE EXISTING BOULEVARD
8. ABANDON EXISTING DRAINAGE INLET AS PER CW 2130
9. INSTALL NEW BARRIER CURB AND GUTTER INLET C/W CATCH PIT (AP-011, AP-012, SD-023)
10. REMOVE EXISTING CATCH BASIN AS PER CW 2130
11. INSTALL NEW BARRIER CURB AND GUTTER INLET C/W CATCH BASIN (AP-011, AP-012, SD-024 - 1200)
12. INSTALL NEW FRAME AND SOLID COVER (AP-006, AP-007)
13. INSTALL NEW FRAME AND GRATED COVER (AP-006, AP-008)
14. ADJUST EXISTING CATCH BASIN FRAME
15. ADJUST EXISTING MANHOLE COVER TO GRADE
16. REMOVE EXISTING CONCRETE SIDEWALK AND RE-GRADE EXISTING BOULEVARD
17. CONSTRUCT NEW CONCRETE SIDEWALK (SD-228A)

GENERAL NOTES

- A. PAVEMENT DIMENSIONS ARE TO BACK OF CURB
- B. ALL CURB RADII UNDER 15.0m SHALL BE MODIFIED
- C. ADD 200.00mm TO ALL DESIGN ELEVATION TO OBTAIN GEODETIC ELEVATIONS
- D. CURB REPLACEMENT AS DIRECTED BY CONTRACT ADMINISTRATOR
- E. CONTRACTOR TO CONFIRM THE LOCATION OF ALL UTILITIES/SERVICES IN THE FIELD PRIOR TO CONSTRUCTION
- F. ASPHALT TIE-INS ON APPROACHES TO BE DETERMINED IN THE FIELD BY CONTRACT ADMINISTRATOR
- G. PAVEMENT REPAIRS SHOWN ARE ONLY A REPRESENTATIVE SAMPLE OF THE TENDER QUANTITIES

PRELIMINARY
NOT TO BE USED FOR
CONSTRUCTION

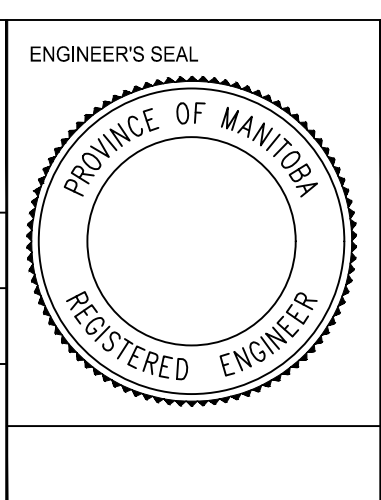
METRIC
WHOLE NUMBERS INDICATE MILLIMETERS
DECIMALIZED NUMBERS INDICATE METERS

TENDER NO. 1-2020

♦	HYDRANT	◆	LDS/WWS	---	FENCE	---	LOCATION APPROVED
⊗	VALVE	---	WATERMAIN	---	CONCRETE	---	UNDERGROUND STRUCTURES
⊘	CURB STOP	●	GAS	---	CONCRETE SIDEWALK	---	
○	MANHOLE	●	TRAFFIC SIGNALS	---	ASPHALT	---	
□	CATCH BASIN	●	HYDRO/STREET LIGHT	---	PAVEMENT REPAIR FABRIC	---	
△	CURB INLET	▲	MTS/SHAW	---	PAVEMENT CORE	---	
○	HYDRO POLE	●	CURB RENEWAL	---	EXISTING	---	
○	LIGHT STANDARD	●	PROPERTY LINE	---	LEGEND - PLAN	---	PROPOSED
○	TRAFFIC SIGNAL POLE	●	CURB RAMP	---	WEST GUTTER	---	
+	SURVEY BAR	◆	ELEVATIONS	---	CENTER LINE	---	
⊕	GEODETIC BENCH MARK	⊕	TREE	---	EAST GUTTER	---	
---	EXISTING	---	EXISTING	---	LEGEND - PROFILE	---	PROPOSED

---	CONCRETE	---	ASPHALT	---	PAVEMENT CORE
---	CONCRETE SIDEWALK	---	PAVEMENT REPAIR FABRIC	---	PAVEMENT CORE
---	ASPHALT	---	PAVEMENT CORE	---	PAVEMENT CORE
---	WEST GUTTER	---	CENTER LINE	---	EAST GUTTER
---	CENTER LINE	---	EAST GUTTER	---	
---	EAST GUTTER	---		---	

B.M. ELEV.	GBM XXX-XXX	2XX-XXX		
ENGINEERING DIVISION TECHNOLOGY SERVICES BRANCH 106 - 1155 PACIFIC AVE				
DESIGNED BY	J.D.	CHECKED BY	R.W. / M.L.	
DRAWN BY	J.D.	APPROVED BY		
2.	ISSUE FOR TENDER	2020/03/16	R.W.	
1.	SUBMIT FOR PLAN APPROVAL	2020/02/20	R.W.	
NO.	REVISIONS	DATE	BY	
		DATE	2020/03/16	



THE CITY OF WINNIPEG
PUBLIC WORKS DEPARTMENT

BESANT STREET
FROM MUNROE AVENUE TO NORTH LIMIT
ASPHALT OVERLAY AND ASSOCIATED WORKS
FROM STA. 2+10 TO STA. 3+30

CITY DRAWING NUMBER
SE-20-72
SHEET 3 OF 29

2