

CONSTRUCTION NOTES

- MILL EXISTING ASPHALT AND CONSTRUCT NEW ASPHALT OVERLAY (TYPE 1A)
- RENEW EXISTING BARRIER CURB (SD-203A, SD-205)
- CONSTRUCT NEW CURB RAMP (SD-229D)
- RENEW EXISTING CONCRETE SIDEWALK (SD-228A)
- INSTALL NEW DETECTABLE WARNING SURFACE TILE (SD-229E)
- RE-GRADE SIDEWALK BLOCKS
- REMOVE EXISTING CONCRETE APPROACH AND RE-GRADE EXISTING BOULEVARD
- ABANDON EXISTING DRAINAGE INLET AS PER CW 2130
- INSTALL NEW BARRIER CURB AND GUTTER INLET C/W CATCH PIT (AP-011, AP-012, SD-023)
- REMOVE EXISTING CATCH BASIN AS PER CW 2130
- INSTALL NEW BARRIER CURB AND GUTTER INLET C/W CATCH BASIN (AP-011, AP-012, SD-024 - 1200)
- INSTALL NEW FRAME AND SOLID COVER (AP-006, AP-007)
- INSTALL NEW FRAME AND GRATED COVER (AP-006, AP-008)
- ADJUST EXISTING CATCH BASIN FRAME
- ADJUST EXISTING MANHOLE COVER TO GRADE
- REMOVE EXISTING CONCRETE SIDEWALK AND RE-GRADE EXISTING BOULEVARD
- CONSTRUCT NEW CONCRETE SIDEWALK (SD-228A)

GENERAL NOTES

- PAVEMENT DIMENSIONS ARE TO BACK OF CURB
- ALL CURB RADII UNDER 15.0m SHALL BE MODIFIED
- ADD 200.00mm TO ALL DESIGN ELEVATION TO OBTAIN GEODETIC ELEVATIONS
- CURB REPLACEMENT AS DIRECTED BY CONTRACT ADMINISTRATOR
- CONTRACTOR TO CONFIRM THE LOCATION OF ALL UTILITIES/SERVICES IN THE FIELD PRIOR TO CONSTRUCTION
- ASPHALT TIE-INS ON APPROACHES TO BE DETERMINED IN THE FIELD BY CONTRACT ADMINISTRATOR
- PAVEMENT REPAIRS SHOWN ARE ONLY A REPRESENTATIVE SAMPLE OF THE TENDER QUANTITIES

PRELIMINARY
NOT TO BE USED FOR
CONSTRUCTION

METRIC
WHOLE NUMBERS INDICATE MILLIMETERS
DECIMALIZED NUMBERS INDICATE METERS

TENDER NO. 1-2020

	HYDRANT			LDS/WWS		FENCE
	VALVE			WATERMAIN		CONCRETE
	CURB STOP			GAS		CONCRETE SIDEWALK
	MANHOLE			TRAFFIC SIGNALS		ASPHALT
	CATCH BASIN			HYDRO/STREET LIGHT		PAVEMENT REPAIR FABRIC
	CURB INLET			MTS/SHAW		PAVEMENT CORE
	HYDRO POLE			CURB RENEWAL		LEGEND - PLAN
	LIGHT STANDARD			PROPERTY LINE		LEGEND - PROFILE
	TRAFFIC SIGNAL POLE			CURB RAMP		WEST GUTTER
	SURVEY BAR			ELEVATIONS		CENTER LINE
	GEODETIC BENCH MARK			TREE		EAST GUTTER
	EXISTING			EXISTING		EXISTING

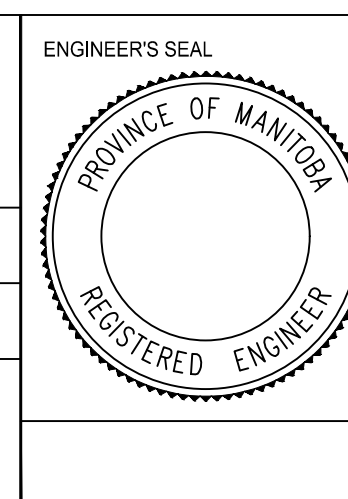
LOCATION APPROVED
UNDERGROUND STRUCTURES

SUPR. U/G STRUCTURES COMMITTEE DATE
NOTE:
LOCATION OF UNDERGROUND STRUCTURES AS SHOWN ARE BASED ON THE BEST INFORMATION AVAILABLE. BUT NO GUARANTEE IS GIVEN THAT ALL EXISTING UTILITIES ARE SHOWN OR THAT THE GIVEN LOCATIONS ARE EXACT. CONFIRMATION OF EXISTENCE AND EXACT LOCATION OF ALL SERVICES MUST BE OBTAINED FROM THE INDIVIDUAL UTILITIES BEFORE PROCEEDING WITH CONSTRUCTION.

B.M. ELEV.	GBM XXX-XXX 2XX.XXX
DESIGNED BY	J.D.
CHECKED BY	R.W. / M.L.
DRAWN BY	J.D.
APPROVED BY	
2. ISSUE FOR TENDER	2020/03/16 R.W.
1. SUBMIT FOR PLAN APPROVAL	2020/02/20 R.W.
NO. REVISIONS	DATE BY

ENGINEERING DIVISION
TECHNOLOGY SERVICES BRANCH
106 - 1155 PACIFIC AVE

DESIGNED BY J.D. CHECKED BY R.W. / M.L.
DRAWN BY J.D. APPROVED BY
HOR. SCALE: 1 : 250
VERTICAL: 1 : 10
DATE 2020/03/16



THE CITY OF WINNIPEG
PUBLIC WORKS DEPARTMENT

BESANT STREET
FROM MUNROE AVENUE TO NORTH LIMIT
ASPHALT OVERLAY AND ASSOCIATED WORKS
FROM STA. 5+70 TO STA. 6+33

CITY DRAWING NUMBER SE-20-75
SHEET 6 OF 29
5