

- CONSTRUCTION NOTES**
- MILL EXISTING ASPHALT AND CONSTRUCT NEW ASPHALT OVERLAY (TYPE 1A)
  - RENEW EXISTING BARRIER CURB (SD-203A, SD-205)
  - CONSTRUCT NEW CURB RAMP (SD-229D)
  - RENEW EXISTING CONCRETE SIDEWALK (SD-228A)
  - INSTALL NEW DETECTABLE WARNING SURFACE TILE (SD-229E)
  - REMOVE EXISTING BUS STOP AND CONSTRUCT NEW CONCRETE BUS STOP
  - ABANDON EXISTING DRAINAGE INLET AS PER CW 2130
  - REMOVE EXISTING CATCH BASIN AS PER CW 2130
  - INSTALL NEW BARRIER CURB AND GUTTER INLET C/W CATCH PIT (AP-011, AP-012, SD-023)
  - INSTALL NEW FRAME AND SOLID COVER C/W CATCH BASIN (AP-006, AP-007, SD-025 - 1800)
  - INSTALL NEW FRAME AND SOLID COVER (AP-006, AP-007)
  - ADJUST EXISTING CATCH BASIN FRAME
  - ADJUST EXISTING MANHOLE COVER TO GRADE
  - REMOVE AND REPLACE EXISTING MANHOLE

- GENERAL NOTES**
- PAVEMENT DIMENSIONS ARE TO BACK OF CURB
  - ALL CURB RADII UNDER 15.0m SHALL BE MODIFIED
  - ADD 200.000mm TO ALL DESIGN ELEVATION TO OBTAIN GEODETIC ELEVATIONS
  - CURB REPLACEMENT AS DIRECTED BY CONTRACT ADMINISTRATOR
  - CONTRACTOR TO CONFIRM THE LOCATION OF ALL UTILITIES/SERVICES IN THE FIELD PRIOR TO CONSTRUCTION
  - ASPHALT TIE-INS ON APPROACHES TO BE DETERMINED IN THE FIELD BY CONTRACT ADMINISTRATOR
  - PAVEMENT REPAIRS SHOWN ARE ONLY A REPRESENTATIVE SAMPLE OF THE TENDER QUANTITIES

**PRELIMINARY**  
NOT TO BE USED FOR  
CONSTRUCTION

**METRIC**  
WHOLE NUMBERS INDICATE MILLIMETERS  
DECIMALIZED NUMBERS INDICATE METERS

TENDER NO. 1-2020

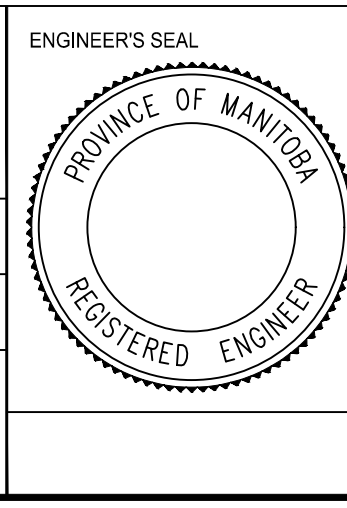
SYMBOL	EXISTING	LEGEND - PLAN	PROPOSED	EXISTING	LEGEND - PLAN	PROPOSED	EXISTING	LEGEND - PROFILE	PROPOSED
⊕		HYDRANT	◆	---	LDS/WWS	---	---	FENCE	---
⊗		VALVE	◆	---	WATERMAIN	---	---	CONCRETE	---
⊖		CURB STOP	◆	---	GAS	---	---	CONCRETE SIDEWALK	---
○		MANHOLE	●	---	TRAFFIC SIGNALS	---	---	ASPHALT	---
□		CATCH BASIN	●	---	HYDRO/STREET LIGHT	---	---	PAVEMENT REPAIR FABRIC	---
△		CURB INLET	▲	---	MTS/SHAW	---	---	PAVEMENT CORE	---
⊙		HYDRO POLE	◆	---	CURB RENEWAL	---	---	LEGEND - PLAN	PROPOSED
○		LIGHT STANDARD	●	---	PROPERTY LINE	---	---	LEGEND - PROFILE	PROPOSED
⊕		TRAFFIC SIGNAL POLE	◆	---	CURB RAMP	---	---	WEST GUTTER	---
⊕		SURVEY BAR	◆	---	ELEVATIONS	---	---	CENTER LINE	---
⊕		GEODETIC BENCH MARK	◆	---	TREE	---	---	EAST GUTTER	---

LOCATION APPROVED  
UNDERGROUND STRUCTURES

NO.	REVISIONS	DATE	BY
1.	ISSUE FOR TENDER	2020/03/16	R.W.
2.	SUBMIT FOR PLAN APPROVAL	2020/02/20	R.W.

ENGINEERING DIVISION  
TECHNOLOGY SERVICES BRANCH  
106 - 1155 PACIFIC AVE

DESIGNED BY	CHECKED BY
J.D.	R.W. / M.L.
DRAWN BY	APPROVED BY
J.D.	



**THE CITY OF WINNIPEG**  
PUBLIC WORKS DEPARTMENT

**GREY STREET**  
FROM UNION AVENUE EAST TO NOTTINGHAM AVENUE  
ASPHALT OVERLAY AND ASSOCIATED WORKS  
FROM STA. 1+00 TO STA. 2+20

CITY DRAWING NUMBER  
SE-20-79  
SHEET 10 OF 29

1