

CONSTRUCTION NOTES

- MILL EXISTING ASPHALT AND CONSTRUCT NEW ASPHALT OVERLAY (TYPE 1A)
- RENEW EXISTING BARRIER CURB (SD-203A, SD-205)
- CONSTRUCT NEW CURB RAMP (SD-229D)
- RENEW EXISTING CONCRETE SIDEWALK (SD-228A)
- INSTALL NEW DETECTABLE WARNING SURFACE TILE (SD-229E)
- REMOVE EXISTING BUS STOP AND CONSTRUCT NEW CONCRETE BUS STOP
- RE-GRADE SIDEWALK BLOCKS
- RE-GRADE PAVING STONES
- ABANDON EXISTING DRAINAGE INLET AS PER CW 2130
- INSTALL NEW BARRIER CURB AND GUTTER INLET C/W CATCH PIT (AP-011, AP-012, SD-024 - 1200)
- INSTALL NEW BARRIER CURB AND GUTTER INLET C/W CATCH BASIN (AP-011, AP-012, SD-024 - 1200)
- INSTALL NEW FRAME AND SOLID COVER (AP-006, AP-007)
- INSTALL NEW FRAME AND GRATED COVER (AP-006, AP-008)
- ADJUST EXISTING CATCH BASIN FRAME
- ADJUST EXISTING MANHOLE COVER TO GRADE

GENERAL NOTES

- PAVEMENT DIMENSIONS ARE TO BACK OF CURB
- ALL CURB RADII UNDER 15.0m SHALL BE MODIFIED
- ADD 200.000m TO ALL DESIGN ELEVATION TO OBTAIN GEODETIC ELEVATIONS
- CURB REPLACEMENT AS DIRECTED BY CONTRACT ADMINISTRATOR
- CONTRACTOR TO CONFIRM THE LOCATION OF ALL UTILITIES/SERVICES IN THE FIELD PRIOR TO CONSTRUCTION
- ASPHALT TIE-INS ON APPROACHES TO BE DETERMINED IN THE FIELD BY CONTRACT ADMINISTRATOR
- PAVEMENT REPAIRS SHOWN ARE ONLY A REPRESENTATIVE SAMPLE OF THE TENDER QUANTITIES

PRELIMINARY
NOT TO BE USED FOR
CONSTRUCTION

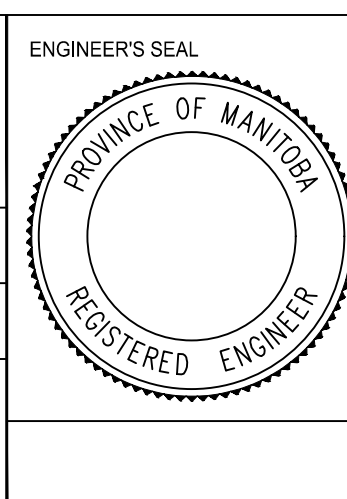
METRIC
WHOLE NUMBERS INDICATE MILLIMETERS
DECIMALIZED NUMBERS INDICATE METERS

TENDER NO. 1-2020

	HYDRANT		VALVE		LDS/WWS		FENCE
	CURB STOP		MANHOLE		GAS		PAVING STONES
	CATCH BASIN		TRAFFIC SIGNALS		HYDRO/STREET LIGHT		CONCRETE SIDEWALK
	CURB INLET		MTS/SHAW		CURB RENEWAL		ASPHALT
	HYDRO POLE		PROPERTY LINE		EXISTING		PAVEMENT CORE
	LIGHT STANDARD		CURB RAMP		LEGEND - PLAN		PROPOSED
	TRAFFIC SIGNAL POLE		ELEVATIONS		NORTH GUTTER		CENTER LINE
	SURVEY BAR		TREE		SOUTH GUTTER		EXISTING LEGEND - PROFILE
	GEODETIC BENCH MARK				PROPOSED LEGEND - PLAN		PROPOSED

<p>LOCATION APPROVED</p> <p>UNDERGROUND STRUCTURES</p> <p>DATE</p>		B.M. ELEV.	GBM XXX-XXX 2XX.XXX
<p>NO.</p> <p>REVISIONS</p>		DATE	BY
1.	SUBMIT FOR PLAN APPROVAL	2020/02/20	R.W.
2.	ISSUE FOR TENDER	2020/03/16	R.W.

<p>ENGINEERING DIVISION TECHNOLOGY SERVICES BRANCH 106 - 1155 PACIFIC AVE</p>			
DESIGNED BY	J.D.	CHECKED BY	R.W. / M.L.
DRAWN BY	J.D.	APPROVED BY	
HOR. SCALE: 1 : 250		VERTICAL: 1 : 10	
DATE: 2020/03/13			



THE CITY OF WINNIPEG
PUBLIC WORKS DEPARTMENT

MANITOBA AVENUE
FROM CHUDLEY STREET TO RAILWAY STREET
ASPHALT OVERLAY AND ASSOCIATED WORKS
FROM STA. 4+40 TO STA. 5+60

CITY DRAWING NUMBER SE-20-86	SHEET 17 OF 29
4	