

- CONSTRUCTION NOTES**
1. CONSTRUCT NEW ASPHALT OVERLAY (TYPE 1A)
  2. RENEW EXISTING BARRIER CURB (SD-203A, SD-205)
  3. CONSTRUCT NEW CURB RAMP (SD-229D)
  4. RENEW EXISTING CONCRETE SIDEWALK (SD-228A)
  5. INSTALL NEW DETECTABLE WARNING SURFACE TILE (SD-229E)
  6. REMOVE OR ABANDON EXISTING CATCH PIT AS PER CW 2130
  7. INSTALL NEW BARRIER CURB AND GUTTER INLET C/W CATCH PIT (AP-011, AP-012, SD-023)
  8. INSTALL NEW FRAME AND GRATED COVER C/W CATCH PIT (AP-006, AP-008, SD-023)
  9. INSTALL NEW BARRIER CURB FRAME AND COVER (AP-011, AP-012)
  10. INSTALL NEW FRAME AND SOLID COVER (AP-006, AP-007)
  11. INSTALL NEW FRAME AND GRATED COVER (AP-006, AP-008)
  12. REMOVE EXISTING SAFETY MEDIAN AND CONSTRUCT NEW SAFETY MEDIAN (SD-226B)
  13. ADJUST EXISTING MANHOLE FRAME
  14. RENEW EXISTING CONCRETE ISLAND AND INSTALL NEW SIGN CLAMP

- GENERAL NOTES**
- A. PAVEMENT DIMENSIONS ARE TO BACK OF CURB
  - B. ALL CURB RADII UNDER 15.0m SHALL BE MODIFIED
  - C. ADD 200.000m TO ALL DESIGN ELEVATION TO OBTAIN GEODETIC ELEVATIONS
  - D. CURB REPLACEMENT AS DIRECTED BY CONTRACT ADMINISTRATOR
  - E. CONTRACTOR TO CONFIRM THE LOCATION OF ALL UTILITIES/SERVICES IN THE FIELD PRIOR TO CONSTRUCTION
  - F. ASPHALT TIE-INS ON APPROACHES TO BE DETERMINED IN THE FIELD BY CONTRACT ADMINISTRATOR
  - G. PAVEMENT REPAIRS SHOWN ARE ONLY A REPRESENTATIVE SAMPLE OF THE TENDER QUANTITIES

**PRELIMINARY**  
NOT TO BE USED FOR  
CONSTRUCTION

**METRIC**  
WHOLE NUMBERS INDICATE MILLIMETERS  
DECIMALIZED NUMBERS INDICATE METERS

TENDER NO. 1-2020

EXISTING	LEGEND - PLAN	PROPOSED	EXISTING	LEGEND - PLAN	PROPOSED	EXISTING	LEGEND - PROFILE	PROPOSED
⊕	HYDRANT	◆	---	LDS/WWS	---	---	FENCE	---
⊗	VALVE	◆	---	WATERMAIN	---	---	CONCRETE	---
⊖	CURB STOP	◆	---	GAS	---	---	CONCRETE SIDEWALK	---
○	MANHOLE	●	---	TRAFFIC SIGNALS	---	---	ASPHALT	---
□	CATCH BASIN	■	---	HYDRO/STREET LIGHT	---	---	PAVEMENT CORE	---
△	CURB INLET	▲	---	MTS/SHAW	---	EXISTING	LEGEND - PLAN	PROPOSED
⊙	HYDRO POLE	●	---	CURB RENEWAL	---	---	LEGEND - PLAN	PROPOSED
⊙	LIGHT STANDARD	●	---	PROPERTY LINE	---	---	NORTH GUTTER	---
⊕	TRAFFIC SIGNAL POLE	●	---	CURB RAMP	---	---	CENTER LINE	---
⊕	SURVEY BAR	◆	---	ELEVATIONS	(31.000)	---	SOUTH GUTTER	---
⊕	GEODETIC BENCH MARK	⊕	---	TREE	---	---		---

**LOCATION APPROVED**  
UNDERGROUND STRUCTURES

SYMBOL	DESCRIPTION	DATE	COMMITTEE
---	---	---	---

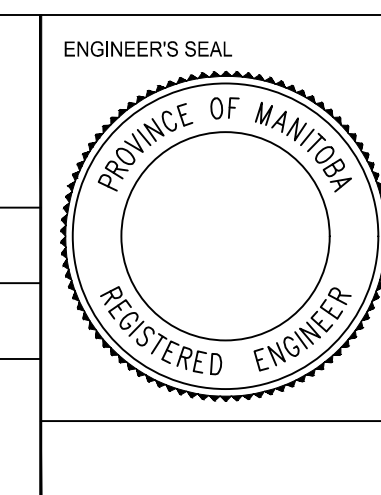
**NOTE:**  
LOCATION OF UNDERGROUND STRUCTURES AS SHOWN ARE BASED ON THE BEST INFORMATION AVAILABLE. BUT NO GUARANTEE IS GIVEN THAT ALL EXISTING UTILITIES ARE SHOWN OR THAT THE GIVEN LOCATIONS ARE EXACT. CONFIRMATION OF EXISTENCE AND EXACT LOCATION OF ALL SERVICES MUST BE OBTAINED FROM THE INDIVIDUAL UTILITIES BEFORE PROCEEDING WITH CONSTRUCTION.

B.M. ELEV.	GBM XXX-XXX 2XX.XXX

ENGINEERING DIVISION  
TECHNOLOGY SERVICES BRANCH  
106 - 1155 PACIFIC AVE

DESIGNED BY	CHECKED BY
J.D.	R.W. / M.L.

DRAWN BY	APPROVED BY
J.D.	



**THE CITY OF WINNIPEG**  
PUBLIC WORKS DEPARTMENT

**PARK LANE AVENUE**  
FROM SELKIRK AVENUE TO DEAD-END  
ASPHALT OVERLAY AND ASSOCIATED WORKS  
FROM STA. 6+90 TO STA. 8+10

CITY DRAWING NUMBER SE-20-94  
SHEET 25 OF 29

6

NO.	REVISIONS	DATE	BY
2.	ISSUE FOR TENDER	2020/03/16	R.W.
1.	SUBMIT FOR PLAN APPROVAL	2020/02/20	R.W.

HOR. SCALE:	VERTICAL:
1 : 250	1 : 10

DATE: 2020/03/13