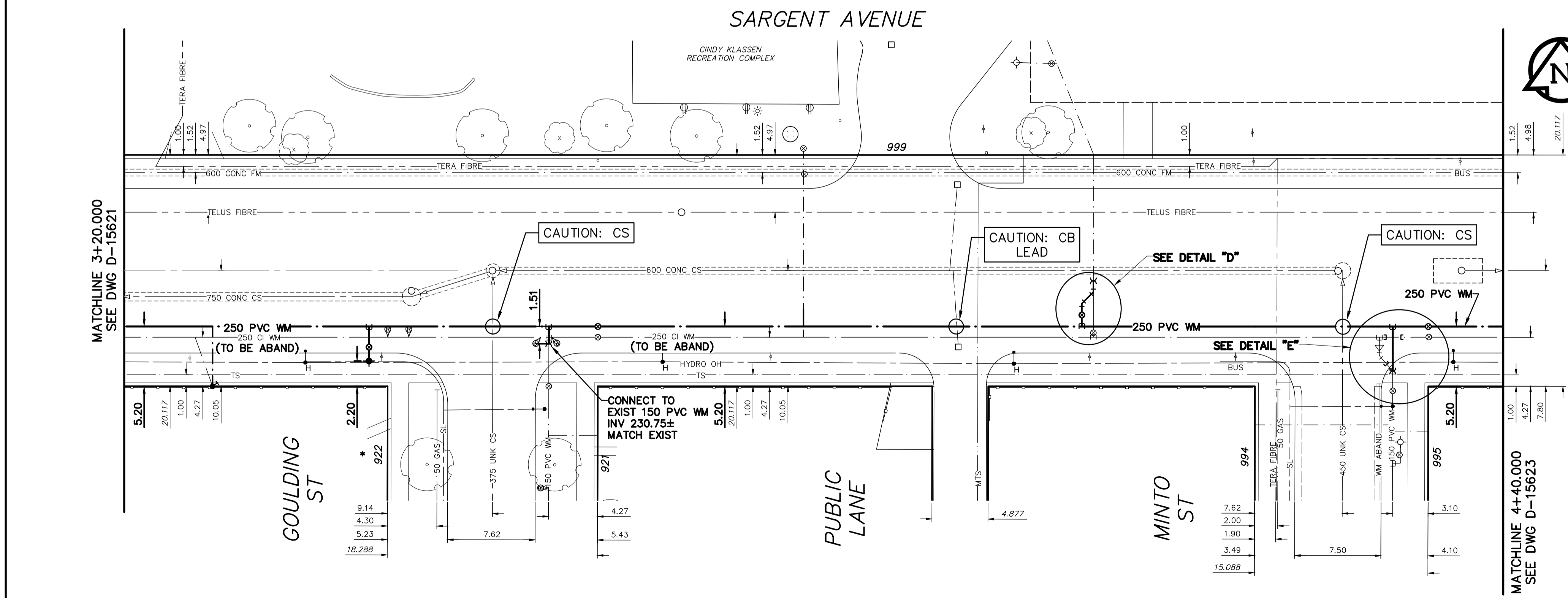
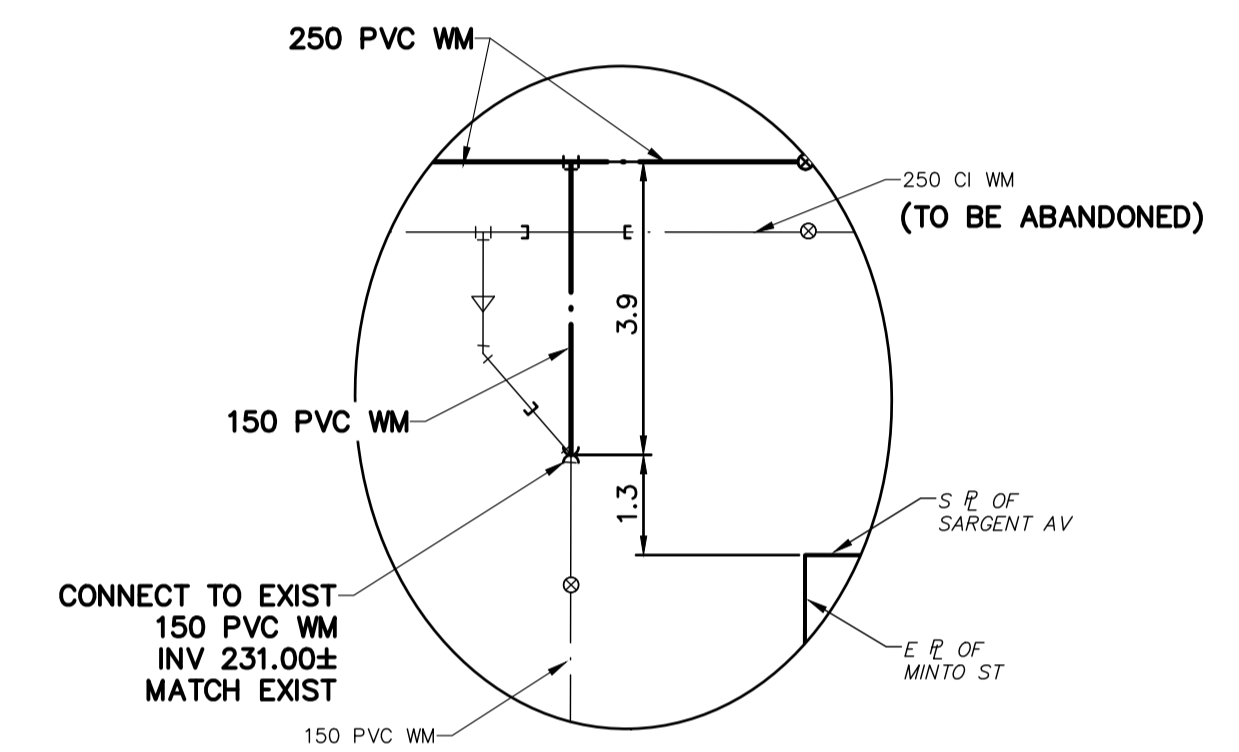
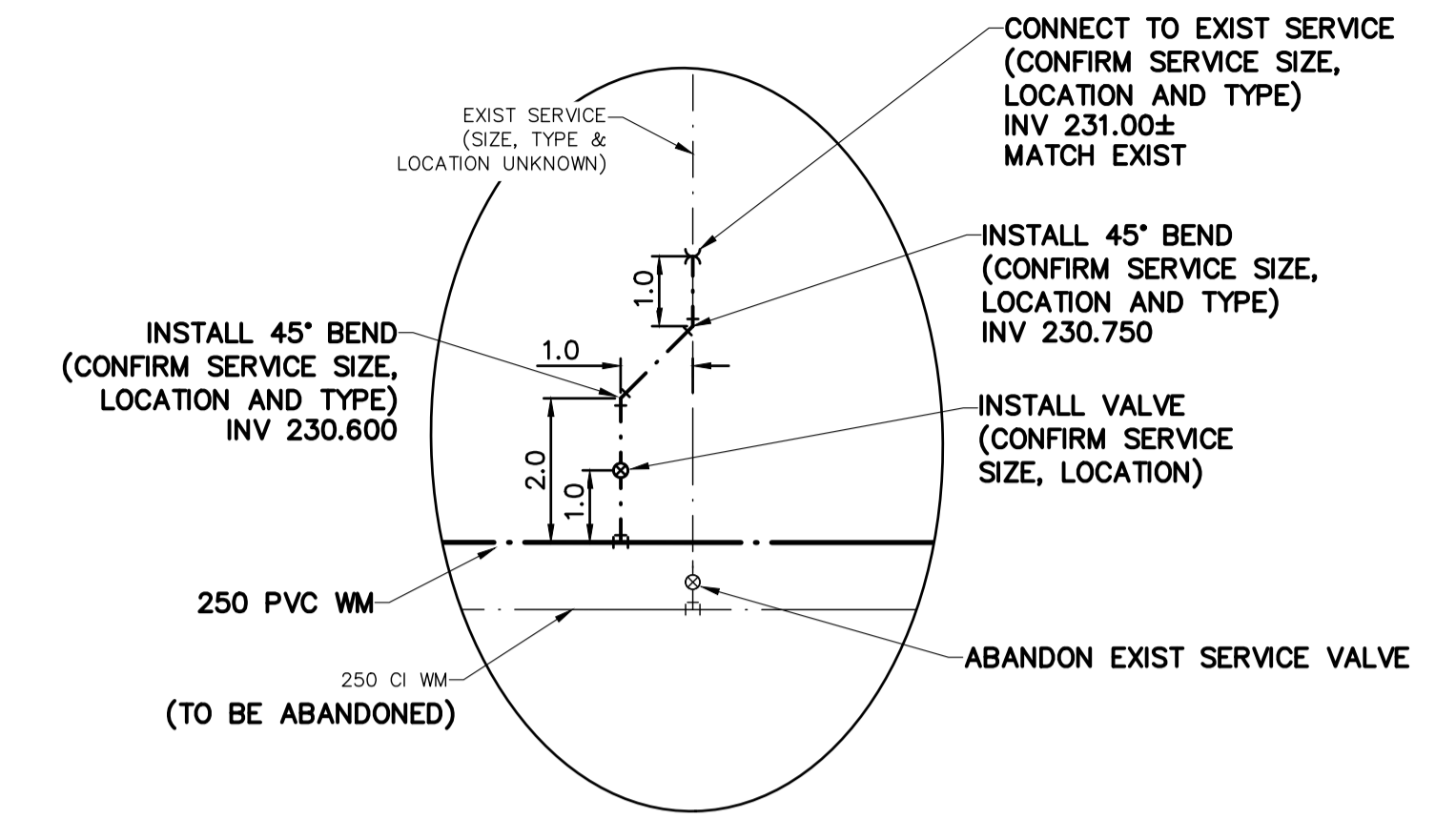


NOTE: CHAINAGES SHOWN ARE ALONG S R OF SARGENT AVENUE



WATER SERVICE INFORMATION

ADDRESS	SIZE (mm) MATERIAL (STREET)	SIZE (mm) MATERIAL (PROP.)	SHORT & LONG MEASUREMENT	CORP. LOCATION	REMARKS
999 SARGENT AV	50	-	-	OPP CURB STOP	RECONNECT SERVICE
COMMERCIAL	CU	-	17.9 EEL GOULding	-	DOMESTIC SERVICE
999 SARGENT AV	-	-	-	-	RECONNECT SERVICE
COMMERCIAL	-	-	-	-	FIRE SERVICE - 2 SUMMER SERVICES TAPPED OFF THIS LINE
921 GOULding ST N	-	-	-	-	SERVICED OFF GOULding ST N
RESIDENTIAL	-	-	-	-	OUTSIDE RENEWAL LIMITS
922 GOULding ST N	20	20	1.83 EWL HOUSE	1.52 W CURB STOP	RENEW SERVICE TO PIL WITH 20 CU
RESIDENTIAL	LEAD	LEAD	15.24 WML GOULding ST	-	-
994 MINTO ST	-	-	-	-	SERVICED OFF MINTO ST
RESIDENTIAL	-	-	-	-	OUTSIDE RENEWAL LIMITS
995 MINTO ST	-	-	-	-	SERVICED OFF MINTO ST
RESIDENTIAL	-	-	-	-	OUTSIDE RENEWAL LIMITS

* SERVICES TO BE RENEWED TO R. ALL OTHERS TO BE RECONNECTED

FOR INDEX SEE D-15619

NOTE: ALL VALVES TO BE INSTALLED COUNTERCLOCKWISE TO CLOSE

ENGINEERS GEOSCIENTISTS MANITOBA
Certificate of Authorization
MORRISON HERSHFIELD
No. 1736

METRIC
WHOLE NUMBERS INDICATE MILLIMETRES
DECIMALIZED NUMBERS INDICATE METRES

HORIZONTAL
0.0 5.0 10.0 15.0 20.0 25.0

VERTICAL
0.0 1.0 2.0 3.0 4.0 5.0

WARNING
IF POWER EQUIPMENT OR EXPLOSIVES ARE TO BE USED FOR EXCAVATION ON THIS PROJECT THE CONTRACTOR MUST:
1) NOTIFY THE GAS COMPANY OF THE PROPOSED LOCATION OF EXCAVATION.
2) TAKE PRECAUTION TO AVOID DAMAGE TO GAS COMPANY INSTALLATIONS.
SEE PROVINCIAL REGULATION 210/72 FOR DETAILS

LOCATION APPROVED UNDERGROUND STRUCTURES
SUPV. U/G STRUCTURES COMMITTEE DATE
NOTE:
LOCATION OF UNDERGROUND STRUCTURES AS SHOWN ARE BASED ON THE BEST INFORMATION AVAILABLE BUT NO GUARANTEE IS GIVEN THAT ALL EXISTING UTILITIES ARE SHOWN OR THAT THE GIVEN LOCATIONS ARE EXACT. CONFIRMATION OF EXISTENCE AND EXACT LOCATION OF ALL SERVICES MUST BE OBTAINED FROM THE INDIVIDUAL UTILITIES BEFORE PROCEEDING WITH CONSTRUCTION.

B.M. ELEV.	36-061 233.359 m	N.W. Cor. Sargent Ave. & Garfield St. N., Tblt. in S. Conc. foundation of Sargent Ave. Mennonite Church, 0.5 m W. & 1.7 m below brick of S.E. Cor. of Bldg.
NO.	REVISIONS	DATE BY

DESIGNED BY	JKH	CHECKED BY	HAK
DRAWN BY	DML	APPROVED BY	HAK
SCALE:	HORIZONTAL 1:250 VERTICAL 1:50		
DATE	2019 12 20	RELEASED FOR CONSTRUCTION	KAS ZUREK
DATE	2020 01 29		

ENGINEER'S SEAL
ORIGINAL SIGNED BY H.A. KATZ
2020 01 29
CONSULTANT DRAWING NUMBER

THE CITY OF WINNIPEG
WATER AND WASTE DEPARTMENT
ENGINEERING DIVISION

2020 WATER MAIN RENEWAL - CONTRACT 7
SARGENT AVENUE - ERIN ST TO LIPTON ST
SARGENT AVENUE
23 W OF GOULding STREET TO
7 E OF MINTO STREET

SHEET 21 OF 26
CITY DRAWING NUMBER
D-15622