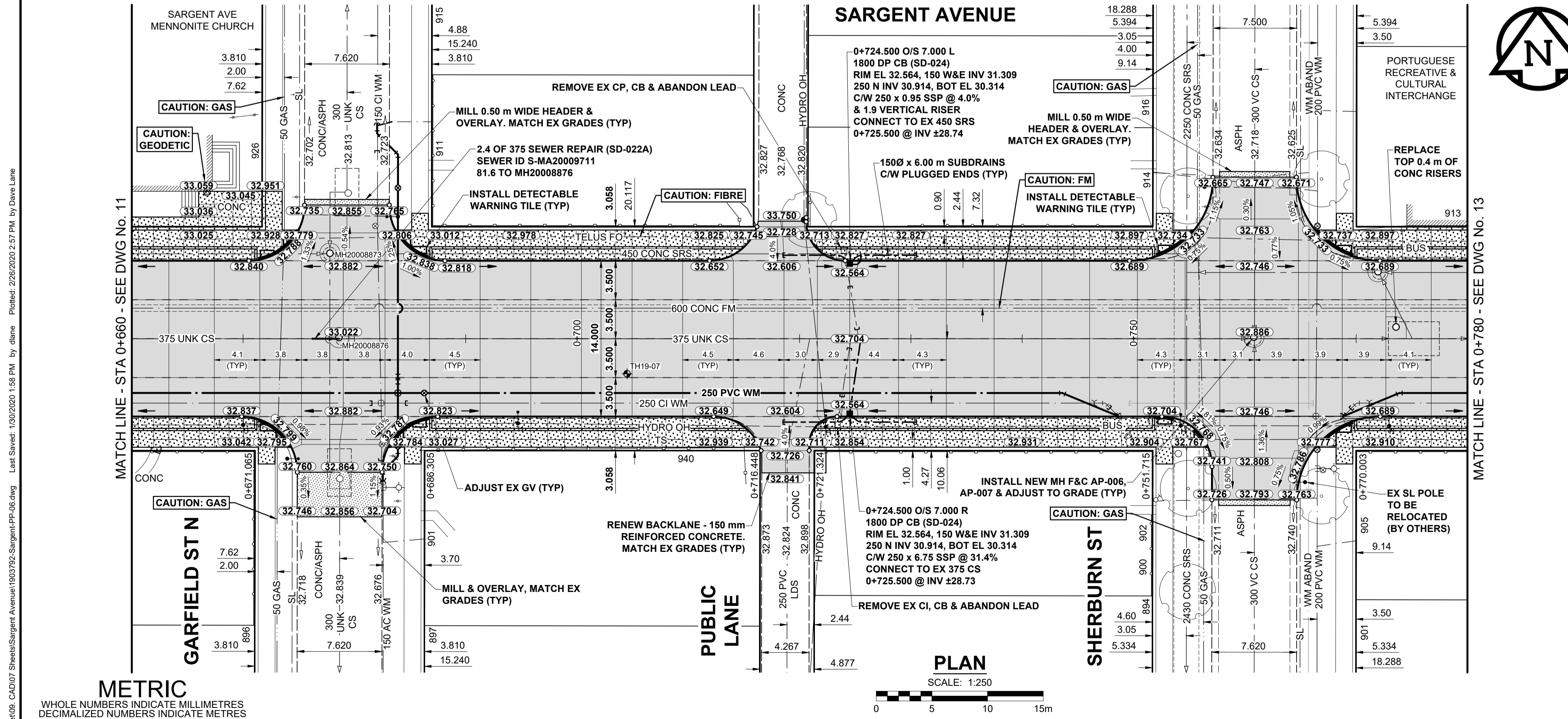


- FEEDERMAIN NOTES**
- CONTACT THE WATER AND WASTE DEPARTMENT'S CONSTRUCTION SERVICES COORDINATOR AT 204-986-4289, 7 DAYS PRIOR TO THE COMMENCEMENT OF CONSTRUCTION TO ARRANGE FOR AN INSPECTION.
 - PRIOR TO ANY CONSTRUCTION, THE FEEDERMAIN MUST BE EXPOSED BY A SOFT DIG METHOD SO AS TO CONFIRM DEPTH AND LOCATION.
 - A MINIMUM CLEARANCE OF 0.5 m MUST BE PROVIDED BETWEEN THE UNDERSIDE OF THE PROPOSED WORKS AND THE TOP ANY EXISTING FEEDERMAIN BY TRENCHLESS OR OPEN TRENCH.
 - DO NOT OPERATE VIBRATORY EQUIPMENT OVER OR WITHIN 3.0 m OF THE FEEDERMAIN CENTRELINE.
 - CONCRETE DEMOLITION AND REMOVAL WITHIN 3 METERS HORIZONTALLY OF THE FEEDERMAIN SHALL BE COMPLETED BY SAWCUTTING AND REMOVAL, OR BY THE USE OF HAND HELD JACKHAMMERS. USE OF MACHINE MOUNTED CONCRETE BREAKERS ABOVE THE FEEDERMAIN SHALL NOT BE PERMITTED.

- NOTES**
- ADJUST MH AND CB RIMS TO NEW GRADES.
 - LAMP STANDARDS, HYDRO POLES, AND ANCHORS THAT REQUIRE TEMPORARY SUPPORT AND BACKFILL TO BE DONE SO AT THE EXPENSE OF THE CONTRACTOR AS NECESSARY.
 - CONTRACTOR TO REGRADE/RENEW EXISTING PRIVATE SIDEWALKS TO LIMITS AS SHOWN. SIDEWALKS TO BE RENEWED WITH CONCRETE UNLESS NOTED OTHERWISE.
 - CONTRACTOR TO TAKE PRECAUTIONARY STEPS TO PROTECT EXISTING TREES WITHIN THE LIMITS OF CONSTRUCTION FROM DAMAGE FROM CONSTRUCTION ACTIVITIES AS OUTLINED IN THE SPECIFICATIONS.
 - CONTRACTOR TO CONFIRM THE LOCATION OF ALL UTILITIES/SERVICES IN THE FIELD PRIOR TO CONSTRUCTION.
 - CB SD-023 & SD-024 OFFSETS ARE DIMENSIONED TO BOC. CB SD-025 OFFSETS ARE DIMENSIONED O/C.
 - IN GENERAL, PAVEMENT AND SIDEWALK AREAS TO BE REMOVED. MATCH RECONSTRUCTION LIMITS.
 - REFER TO TENDER FOR DETAILS REGARDING TRAFFIC MANAGEMENT.
 - EXISTING LONG WATER SERVICES TO BE INSULATED (SD-018). REFER TO TENDER FOR FURTHER REQUIREMENTS AND AS NOTED IN PLAN.
 - ALL COSTS, MATERIALS AND LABOR ASSOCIATED WITH THE RESTORATION OF THE CATHODIC PROTECTED WATERMAIN WILL BE RESPONSIBILITY OF THE CONTRACTOR.
 - MATCH EXISTING GRADES AT DOOR SILLS.
 - ADD 200.000 m TO ABBREVIATED ELEVATIONS TO OBTAIN GEODETIC ELEVATIONS.



METRIC
WHOLE NUMBERS INDICATE MILLIMETRES
DECIMALIZED NUMBERS INDICATE METRES

---	GAS	○	MANHOLE	●	CONCRETE PAVEMENT	LOCATION APPROVED UNDERGROUND STRUCTURES
---	MTS HANDWELL/PEDESTAL	□	CATCH BASIN/CATCH PIT	■	CONC SIDEWALK/MEDIAN	DATE
---	HYDRO HANDWELL/CABINET	△	CURB INLET WITH BOX	▲	ASPHALT PAVEMENT	NOTE:
---	CATV/FIBRE OPTIC	○	TREE	▲	PAVING STONE	LOCATION OF UNDERGROUND STRUCTURES AS SHOWN ARE BASED ON THE BEST INFORMATION AVAILABLE BUT NO GUARANTEE IS GIVEN THAT ALL EXISTING UTILITIES ARE SHOWN OR THAT THE GIVEN LOCATIONS ARE EXACT. CONFIRMATION OF EXISTENCE AND EXACT LOCATION OF ALL SERVICES MUST BE OBTAINED FROM THE INDIVIDUAL UTILITIES BEFORE PROCEEDING WITH CONSTRUCTION.
---	TRAFFIC SIGNALS/PIT	⊕	TEST HOLE	▲	GRAVEL	
---	LAND DRAINAGE SEWER	⊕	PROPERTY LINE	▲	RAMP CURB	
---	SANITARY/COMBINED SEWER	⊕	SURVEY BAR	▲	PLANING/REMOVAL	
---	CB LEAD/SSP/DCP	⊕	FENCE	▲		
---	WATERMAIN	⊕	BOC/EDGE OF PAVEMENT	▲		
---	SUBDRAIN	⊕	ELEVATION (33.333)	▲		
---	DITCH	---	TRAFFIC SIGN	▲		
---	EXISTING	---	LEGEND - PLAN	---	LEGEND - PLAN	---
---	NEW	---	LEGEND - PLAN	---	LEGEND - PLAN	---

LOCATION APPROVED UNDERGROUND STRUCTURES

DATE

NOTE:
LOCATION OF UNDERGROUND STRUCTURES AS SHOWN ARE BASED ON THE BEST INFORMATION AVAILABLE BUT NO GUARANTEE IS GIVEN THAT ALL EXISTING UTILITIES ARE SHOWN OR THAT THE GIVEN LOCATIONS ARE EXACT. CONFIRMATION OF EXISTENCE AND EXACT LOCATION OF ALL SERVICES MUST BE OBTAINED FROM THE INDIVIDUAL UTILITIES BEFORE PROCEEDING WITH CONSTRUCTION.

BM 37-59 ELEV 233.277 m	NE Cor. Erin St. & Richard Ave., Tbl. in W. Conc. Foundation No. 1525 Erin St., 1 m N. & 0.7 m below back of S.W. Cor. of Blg.	DESIGNED BY WRJ	CHECKED BY RPB
		DRAWN BY DML	APPROVED BY BWB
		ISSUED FOR TENDER 20/02/27	RELEASED FOR CONSTRUCTION 20/02/03
		ISSUED FOR REVIEW 20/02/03	
No. REVISIONS	DATE	BY	DATE

PROFESSIONAL'S SEAL

PRELIMINARY DRAWING

NOT TO BE USED FOR CONSTRUCTION

CONSULTANT FILE NAME
1903792-Sargent-PP-06.dwg

THE CITY OF WINNIPEG
PUBLIC WORKS DEPARTMENT
ENGINEERING DIVISION

2020 PAVEMENT RENEWALS PROJECT
SARGENT AVENUE RECONSTRUCTION
ERIN STREET TO ARLINGTON STREET

SARGENT AVENUE
PAVING AND GRADING
STA 0+660 TO STA 0+780

CITY DRAWING NUMBER
P-3519-12

SHEET OF
12 OF 26

DRAWING NUMBER
12

TENDER No. 10-2020