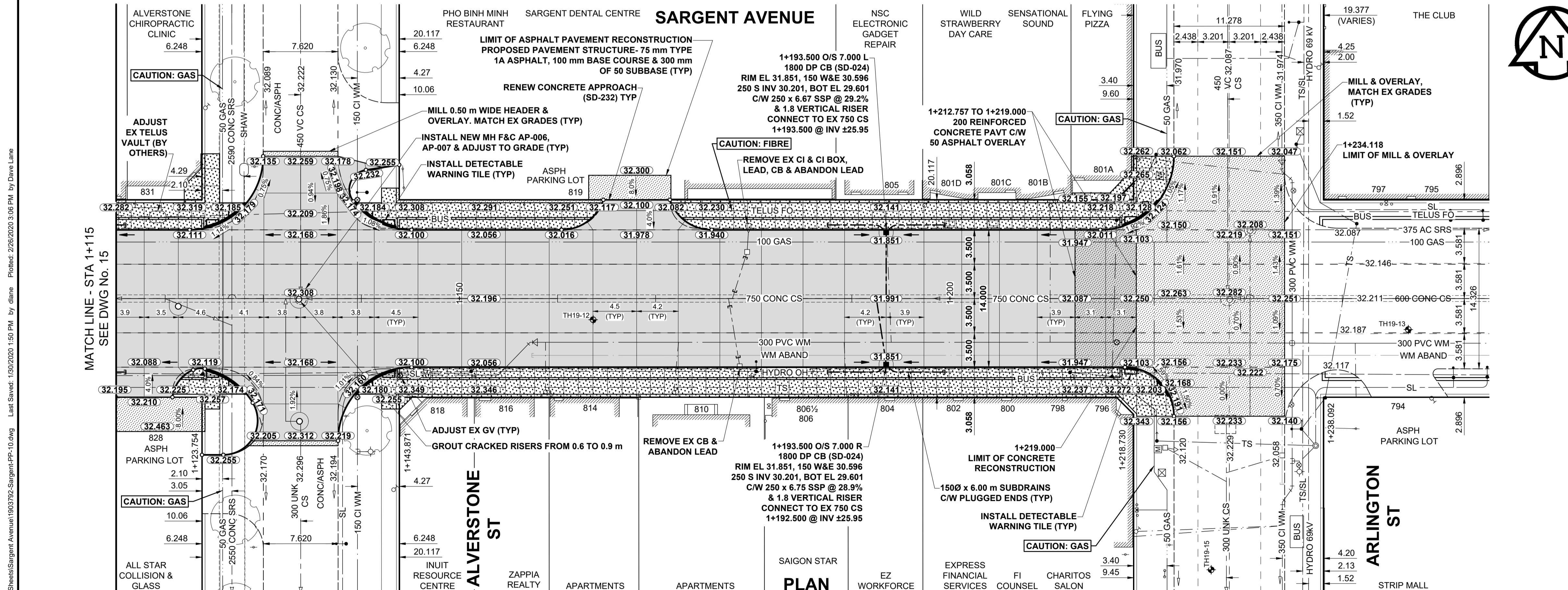


- NOTES**
- ADJUST MH AND CB RIMS TO NEW GRADES.
 - LAMP STANDARDS, HYDRO POLES, AND ANCHORS THAT REQUIRE TEMPORARY SUPPORT AND BACKFILL TO BE DONE SO AT THE EXPENSE OF THE CONTRACTOR AS NECESSARY.
 - CONTRACTOR TO REGRADE/RENEW EXISTING PRIVATE SIDEWALKS TO LIMITS AS SHOWN. SIDEWALKS TO BE RENEWED WITH CONCRETE UNLESS NOTED OTHERWISE.
 - CONTRACTOR TO TAKE PRECAUTIONARY STEPS TO PROTECT EXISTING TREES WITHIN THE LIMITS OF CONSTRUCTION FROM DAMAGE FROM CONSTRUCTION ACTIVITIES AS OUTLINED IN THE SPECIFICATIONS.
 - CONTRACTOR TO CONFIRM THE LOCATION OF ALL UTILITIES/SERVICES IN THE FIELD PRIOR TO CONSTRUCTION.
 - CB SD-023 & SD-024 OFFSETS ARE DIMENSIONED TO BOC. CB SD-025 OFFSETS ARE DIMENSIONED O/C.
 - IN GENERAL, PAVEMENT AND SIDEWALK AREAS TO BE REMOVED. MATCH RECONSTRUCTION LIMITS.
 - REFER TO TENDER FOR DETAILS REGARDING TRAFFIC MANAGEMENT.
 - EXISTING LONG WATER SERVICES TO BE INSULATED (SD-018). REFER TO TENDER FOR FURTHER REQUIREMENTS AND AS NOTED IN PLAN.
 - ALL COSTS, MATERIALS AND LABOR ASSOCIATED WITH THE RESTORATION OF THE CATHODIC PROTECTED WATERMAIN WILL BE RESPONSIBILITY OF THE CONTRACTOR.
 - MATCH EXISTING GRADES AT DOOR SILLS.
 - ADD 200.00m TO ABOVE ELEVATIONS TO OBTAIN GEODETIC ELEVATIONS.



METRIC
WHOLE NUMBERS INDICATE MILLIMETRES
DECIMAL NUMBERS INDICATE METRES

---	GAS	○	MANHOLE	●	CONCRETE PAVEMENT	LOCATION APPROVED UNDERGROUND STRUCTURES
---	MTS HANDWELL/PEDESTAL	△	CATCH BASIN/CATCH PIT	■	CONC SIDEWALK/MEDIAN	---
---	HYDRO HANDWELL/CABINET	□	CURB INLET WITH BOX	▲	ASPHALT PAVEMENT	---
---	CATV/FIBRE OPTIC	○	TREE	●	PAVING STONE	---
---	TRAFFIC SIGNALS/PIT	⊕	TEST HOLE	⊕	GRAVEL	---
---	LAND DRAINAGE SEWER	---	PROPERTY LINE	---	RAMP CURB	---
---	SANITARY/COMBINED SEWER	---	SURVEY BAR	---	PLANING/REMOVAL	---
---	CB LEAD/SSP/DPC	---	FENCE	---	---	---
---	WATERMAIN	---	BOC/EDGE OF PAVEMENT	---	---	---
---	SUBDRAIN	---	ELEVATION (33.333)	---	---	---
---	DITCH	---	TRAFFIC SIGN	---	---	---
---	EXISTING	---	LEGEND - PLAN	---	---	---
---	NEW	---	LEGEND - PLAN	---	---	---

BM 37-59 ELEV 233.277 m	NE Cor. Erin St. & Richard Ave., Tbl. in W. Conc. Foundation No. 1525 Erin St., 1 m N. & 0.7 m below back of S.W. Cor. of Blg.	DESIGNED BY WRJ	CHECKED BY RPB
		DRAWN BY DML	APPROVED BY BWB
		RELEASED FOR CONSTRUCTION	
B	ISSUED FOR TENDER	20/02/27	RPB
A	ISSUED FOR REVIEW	20/02/03	RPB
No.	REVISIONS	DATE	BY

PROFESSIONAL'S SEAL
PRELIMINARY DRAWING
NOT TO BE USED FOR CONSTRUCTION
CONSULTANT FILE NAME
1903792-Sargent-PP-10.dwg

THE CITY OF WINNIPEG
PUBLIC WORKS DEPARTMENT
ENGINEERING DIVISION

2020 PAVEMENT RENEWALS PROJECT
SARGENT AVENUE RECONSTRUCTION
ERIN STREET TO ARLINGTON STREET

SARGENT AVENUE
PAVING AND GRADING
STA 1+115 TO ARLINGTON ST

CITY DRAWING NUMBER
P-3519-16
SHEET OF
16 OF 26
DRAWING NUMBER
16

TENDER No. 10-2020

P:\2019\19037920-2019-2020\Erin-St.-Sargent-Avenue\1903792-Sargent-PP-10.dwg
Last Saved: 1/30/2020 1:50 PM by eliane
Plotted: 2/26/2020 3:06 PM by Dave Lane