

- CONSTRUCTION NOTES**
- REMOVE EXISTING SIDEWALK AND CONSTRUCT NEW 100mm CONCRETE SIDEWALK (SD-228A)
  - REMOVE EXISTING CURB BY PLANING (SD-202C) AND CONSTRUCT NEW BARRIER CURB (SD-205)
  - REMOVE EXISTING ASPHALT
  - INSTALL NEW CATCH PIT WITH CURB AND GUTTER INLET FRAME (SD-023), AND CONNECT TO EXISTING MANHOLE WITH 250mm PVC PIPE AS PER CW 2130
  - REGRADE EXISTING PATIO BLOCKS
  - INSTALL NEW 1800 CATCH BASIN WITH CURB & GUTTER INLET (SD-024) CONNECT TO EXISTING MANHOLE WITH 250mm PVC PIPE AS PER CW 2130
  - INSTALL NEW CURB AND GUTTER INLET FRAME (SD-023)
  - REMOVE EXISTING CURB INLET
  - REMOVE EXISTING CATCH PIT
  - ASPHALT OVERLAY (80mm AVERAGE THICKNESS)
  - REMOVE EXISTING AND CONSTRUCT NEW 150mm REINFORCED CONCRETE APPROACH (SD-232)
  - REMOVE EXISTING CURB AND CONSTRUCT NEW LIP CURB (SD-202B)

- GENERAL NOTES**
- PAVEMENT DIMENSIONS ARE TO BACK OF CURB
  - ALL CURB RADII UNDER 15.0m SHALL BE MODIFIED
  - CURB REPLACEMENT AS DIRECTED BY CONTRACT ADMINISTRATOR
  - INSTALL DETECTABLE WARNING TILES AS DIRECTED BY CONTRACT ADMINISTRATOR (CW 3326)
  - PAVEMENT REPAIRS SHOWN ARE ONLY A REPRESENTATIVE SAMPLE OF THE TENDERED QUANTITIES
  - ASPHALT TIE-INS ON APPROACHES TO BE DETERMINED IN THE FIELD BY THE CONTRACT ADMINISTRATOR

**PRELIMINARY**  
NOT TO BE USED FOR  
CONSTRUCTION

**METRIC**  
WHOLE NUMBERS INDICATE MILLIMETERS  
DECIMALIZED NUMBERS INDICATE METERS  
**BID OPPORTUNITY NO. 102-2020**

⊕	HYDRANT	◆	---	LDS/WWS	---	CONCRETE	---	LOCATION APPROVED	
⊗	VALVE	◆	---	WATERMAIN	---	CONCRETE SIDEWALK	---	UNDERGROUND STRUCTURES	
⊙	CURB STOP	◆	---	GAS	---	ASPHALT	---		
○	MANHOLE	●	---	TRAFFIC SIGNALS	---	ASPHALT PLANING	---		
□	CATCH BASIN	●	---	HYDRO/STREET LIGHT	---	WOOD FENCE	---		
△	CURB INLET	▲	---	MTS/SHAW	---	UTILITY BOX	---		
○	HYDRO POLE	●	---	CURB RENEWAL	---	BOLLARD	---		
○	LIGHT STANDARD	●	---	PROPERTY LINE	---	LEGEND - PLAN	---		
○	TRAFFIC SIGNAL POLE	●	---	RAMP CURB	---	NORTH/EAST GUTTER	---		
+	SURVEY BAR	+	---	ELEVATIONS	(31.000)	CENTER LINE	---		
⊕	GEODETIC BENCH MARK	⊕	---	TREE	---	SOUTH/WEST GUTTER	---		
---	EXISTING	---	---	EXISTING	---	LEGEND - PROFILE	---		
---	LEGEND - PLAN	---	---	PROPOSED	---	PROPOSED	---		

**LEGEND - PLAN**

**LEGEND - PROFILE**

**EXISTING**      **PROPOSED**

CONCRETE  
CONCRETE SIDEWALK  
ASPHALT  
ASPHALT PLANING  
WOOD FENCE  
UTILITY BOX  
BOLLARD

LEGEND - PLAN  
NORTH/EAST GUTTER  
CENTER LINE  
SOUTH/WEST GUTTER

LEGEND - PROFILE  
NORTH/EAST GUTTER  
CENTER LINE  
SOUTH/WEST GUTTER

**LOCATION APPROVED UNDERGROUND STRUCTURES**

DATE

**NOTE:**  
LOCATION OF UNDERGROUND STRUCTURES AS SHOWN ARE BASED ON THE BEST INFORMATION AVAILABLE. BUT NO GUARANTEE IS GIVEN THAT ALL EXISTING UTILITIES ARE SHOWN OR THAT THE GIVEN LOCATIONS ARE EXACT. CONFIRMATION OF EXISTENCE AND EXACT LOCATION OF ALL SERVICES MUST BE OBTAINED FROM THE INDIVIDUAL UTILITIES BEFORE PROCEEDING WITH CONSTRUCTION.

B.M. ELEV. 231.655 I.B. @ NE CORNER OF 2 ROUGEAU AVE

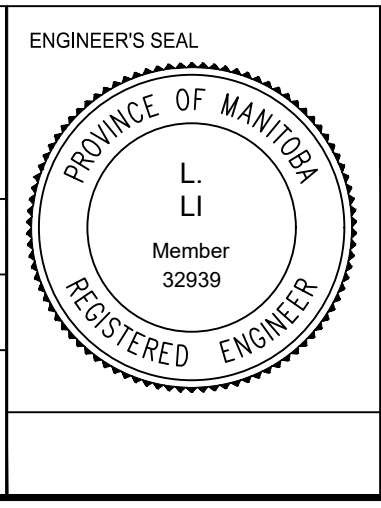
ENGINEERING DIVISION  
TECHNOLOGY SERVICES BRANCH  
106 - 1155 PACIFIC AVE

DESIGNED BY C.W.      CHECKED BY G.K. C.H. M.L.

DRAWN BY C.W.      APPROVED BY

HOR. SCALE: 1 : 250  
VERTICAL: 1 : 10

DATE 2020/03/27



**THE CITY OF WINNIPEG**  
PUBLIC WORKS DEPARTMENT

**HATCHER ROAD**  
FROM BOURNAIS DR TO ROUGEAU AVE  
ASPHALT OVERLAY AND ASSOCIATED WORKS  
FROM STA. 4+30 TO STA. 5+40

CITY DRAWING NUMBER  
SE-20-57  
SHEET 4 OF 5

**4**