

CONSTRUCTION NOTES

1. REMOVE EXISTING SIDEWALK AND CONSTRUCT NEW 100mm CONCRETE SIDEWALK (SD-228A)
2. REMOVE EXISTING CURB AND CONSTRUCT NEW BARRIER CURB (SD-205)
3. MILL EXISTING ASPHALT
4. INSTALL NEW 1800 CATCH BASIN WITH CURB AND GUTTER INLET FRAME (SD-023), AND CONNECT TO MANHOLE WITH 250mm PVC PIPE AS PER CW 2130
5. REGRADE EXISTING PATIO BLOCKS
6. INSTALL NEW 1200 CATCH BASIN WITH CURB & GUTTER INLET (SD-024) CONNECT TO EXISTING LDS AS PER CW 2130
7. INSTALL NEW CURB AND GUTTER INLET FRAME (SD-023)
8. CONSTRUCT NEW 100mm CONCRETE SIDEWALK (SD-228A)
9. INSTALL NEW CURB AND GUTTER INLET FRAME (AP-008) AND COVER (AP-009)
10. REMOVE OR ABANDON EXISTING TRAFFIC SIGNAL BASE AS PER CW 3620
11. INSTALL PAVEMENT REPAIR FABRIC AS DIRECTED BY CONTRACT ADMINISTRATOR
12. REMOVE EXISTING CURB AND PAVEMENT & INSTALL SUITABLE FILL, TOP SOIL AND SOD TO GRADE
13. CONSTRUCT NEW BARRIER CURB (SD-205)
14. REMOVE EXISTING CONCRETE BLOCKS AND CONSTRUCT NEW 100mm CONCRETE BUS PAD
15. CONSTRUCT NEW 100mm CONCRETE SIDEWALK (SD-228A)

GENERAL NOTES

- A. PAVEMENT DIMENSIONS ARE TO BACK OF CURB
- B. ALL CURB RADII UNDER 15.0m SHALL BE MODIFIED
- C. CURB REPLACEMENT AS DIRECTED BY CONTRACT ADMINISTRATOR
- D. INSTALL DETECTABLE WARNING TILES AS DIRECTED BY CONTRACT ADMINISTRATOR (CW 3326)
- E. PAVEMENT REPAIRS SHOWN ARE ONLY A REPRESENTATIVE SAMPLE OF THE TENDERED QUANTITIES
- F. ASPHALT TIE-INS ON APPROACHES TO BE DETERMINED IN THE FIELD BY THE CONTRACT ADMINISTRATOR

PRELIMINARY
NOT TO BE USED FOR CONSTRUCTION

METRIC

WHOLE NUMBERS INDICATE MILLIMETERS
DECIMALIZED NUMBERS INDICATE METERS

BID OPPORTUNITY NO. 102-2020

⊕	HYDRANT	◆	---	LDS/WWS	---	▨	CONCRETE	---	LOCATION APPROVED
⊗	VALVE	●	---	WATERMAIN	---	▨	CONCRETE SIDEWALK	---	UNDERGROUND STRUCTURES
⊙	CURB STOP	●	---	GAS	---	▨	ASPHALT	---	
○	MANHOLE	●	---	TRAFFIC SIGNALS	---	▨	PAVEMENT REPAIR FABRIC	---	
□	CATCH BASIN	●	---	HYDRO/STREET LIGHT	---	▨	LEGEND - PLAN	PROPOSED	
△	CURB INLET	▲	---	MTS/SHAW	---	▨	LEGEND - PROFILE	PROPOSED	
○	HYDRO POLE	●	---	CURB RENEWAL	---	▨	NORTH GUTTER	---	
○	LIGHT STANDARD	●	---	PROPERTY LINE	---	▨	CENTER LINE	---	
○	TRAFFIC SIGNAL POLE	●	---	RAMP CURB	---	▨	SOUTH GUTTER	---	
+	SURVEY BAR	+	---	ELEVATIONS	(31.000)	▨	NORTH SIDEWALK	---	
⊕	GEODETIC BENCH MARK	⊕	---	TREE	---	▨	SOUTH SIDEWALK	---	
---	EXISTING	---	---	EXISTING	---	---	---	---	
---	LEGEND - PLAN	---	---	LEGEND - PLAN	---	---	---	---	
---	PROPOSED	---	---	PROPOSED	---	---	---	---	

IB @ NE CORNER OF 67 GEMINI AVE
ELEV. 230.717

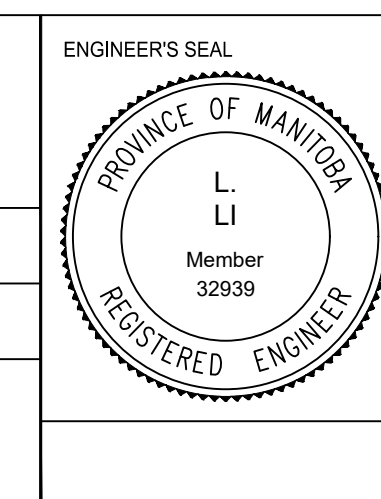
ENGINEERING DIVISION
TECHNOLOGY SERVICES BRANCH
106 - 1155 PACIFIC AVE

DESIGNED BY C.W. CHECKED BY G.K. C.H. M.L.
DRAWN BY C.W. APPROVED BY

HOR. SCALE: 1 : 250
VERTICAL: 1 : 10
DATE: 2020/03/27

1. SUBMITTED FOR PLAN APPROVAL 20/03/06 C.W.
NO. REVISIONS DATE BY

NOTE:
LOCATION OF UNDERGROUND STRUCTURES AS SHOWN ARE BASED ON THE BEST INFORMATION AVAILABLE. BUT NO GUARANTEE IS GIVEN THAT ALL EXISTING UTILITIES ARE SHOWN OR THAT THE GIVEN LOCATIONS ARE EXACT. CONFIRMATION OF EXISTENCE AND EXACT LOCATION OF ALL SERVICES MUST BE OBTAINED FROM THE INDIVIDUAL UTILITIES BEFORE PROCEEDING WITH CONSTRUCTION.



THE CITY OF WINNIPEG
PUBLIC WORKS DEPARTMENT

SPRINGFIELD ROAD
FROM BRIAN ST TO GATEWAY RD
ASPHALT OVERLAY AND ASSOCIATED WORKS
FROM STA. 5+40 TO STA. 6+50

CITY DRAWING NUMBER SE-20-66
SHEET 5 OF 6
5