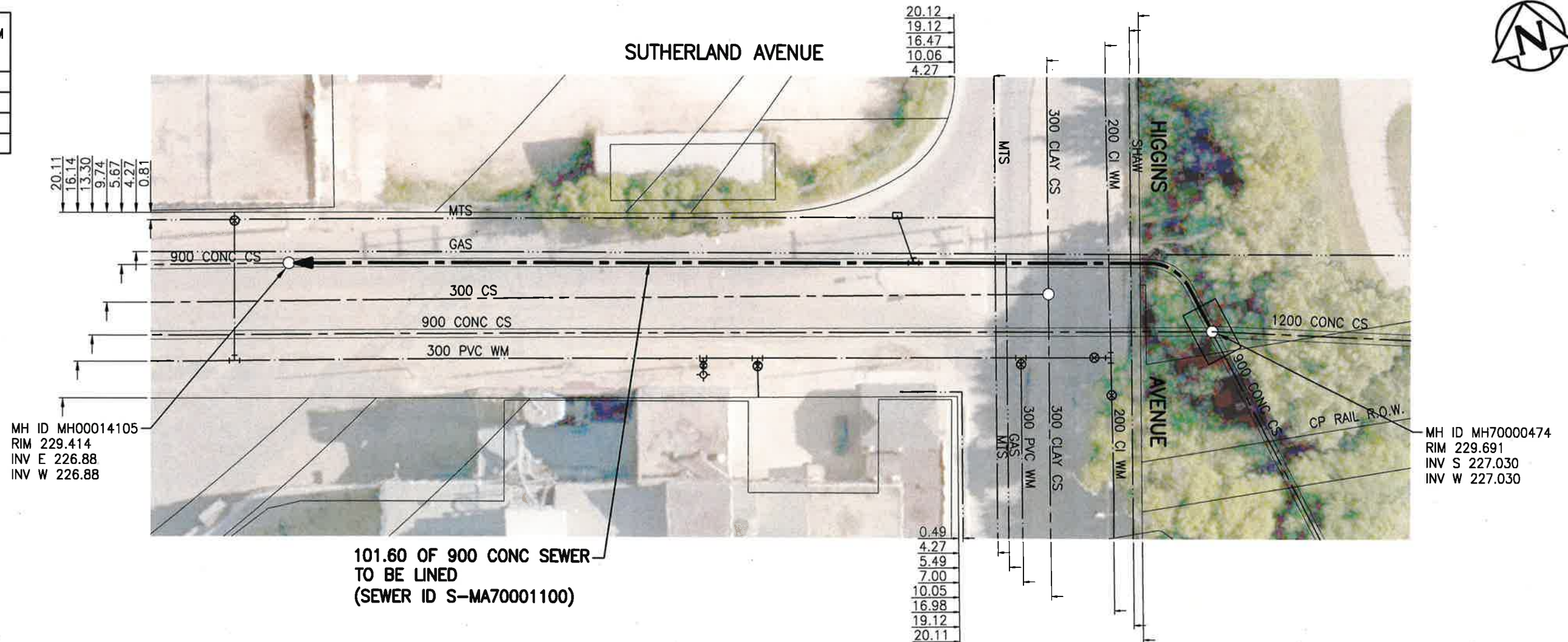


SEWER JUNCTION INFORMATION FROM SEWER VIDEO INSPECTION		
SEWER ID S-MA70001100		
DISTANCE FROM MH00014105		
DISTANCE	DIAMETER	CLOCK
5.7	150	10



MH ID MH00014105
RIM 229.414
INV E 226.88
INV W 226.88

MH ID MH70000474
RIM 229.691
INV S 227.030
INV W 227.030

101.60 OF 900 CONC SEWER TO BE LINED (SEWER ID S-MA70001100)

WARNING

IF POWER EQUIPMENT OR EXPLOSIVES ARE TO BE USED FOR EXCAVATION ON THIS PROJECT THE CONTRACTOR MUST:

- 1) NOTIFY THE GAS COMPANY OF THE PROPOSED LOCATION OF EXCAVATION.
- 2) TAKE PRECAUTION TO AVOID DAMAGE TO GAS COMPANY INSTALLATIONS.

SEE PROVINCIAL REGULATION 140/92 FOR DETAILS

ENGINEERS GEOSCIENTISTS MANITOBA
Certificate of Authorization
Stantec Consulting Ltd.
No. 1301

METRIC
WHOLE NUMBERS INDICATE MILLIMETRES
DECIMALIZED NUMBERS INDICATE METRES

1:500

TENDER NO. 116-2020

LOCATION APPROVED UNDERGROUND STRUCTURES

SUPV. U/G STRUCTURES COMMITTEE	DATE

NOTE:
LOCATION OF UNDERGROUND STRUCTURES AS SHOWN ARE BASED ON THE BEST INFORMATION AVAILABLE BUT NO GUARANTEE IS GIVEN THAT ALL EXISTING UTILITIES ARE SHOWN OR THAT THE GIVEN LOCATIONS ARE EXACT. CONFIRMATION OF EXISTENCE AND EXACT LOCATION OF ALL SERVICES MUST BE OBTAINED FROM THE INDIVIDUAL UTILITIES BEFORE PROCEEDING WITH CONSTRUCTION.

NO.	REVISIONS	DATE	BY
2	ISSUED FOR TENDER	20.03.20	RS
1	ISSUED FOR REVIEW	20.03.09	RS

Stantec
905 Waverley Street, Winnipeg, Manitoba
Tel 204-489-5900 Fax 204-453-9012

DESIGNED BY	RS	CHECKED BY	RS
DRAWN BY	SC	APPROVED BY	RS
HOR. SCALE:	1:500	RELEASED FOR CONSTRUCTION:	
VERTICAL:		DATE	20.01.06

ENGINEER'S SEAL

CONSULTANT DRAWING NO. C-108

THE CITY OF WINNIPEG WATER AND WASTE DEPARTMENT

2019 SEWER RENEWALS BY CIPP LINING
CONTRACT 4
SUTHERLAND AVENUE
1ST MH E OF HIGGINS AVE TO
1ST MH W OF HIGGINS AVE

SHEET	OF
10	12
CAD FILE DRAWING NUMBER 18930c-101-934.dwg	
CITY DRAWING NUMBER 12389	

V:\1112\active\11218930\0300_drawing\0302_sheet_files\02_civil\18930c-101-934.dwg