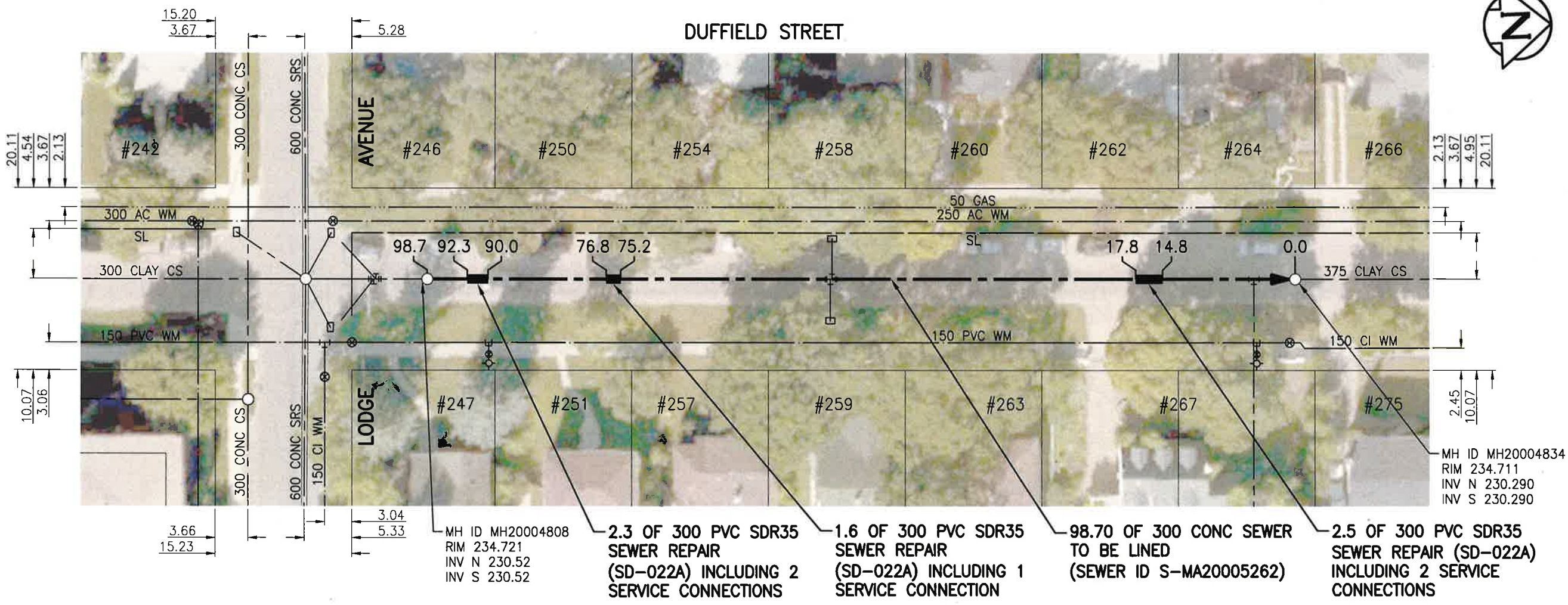




SEWER JUNCTION INFORMATION FROM SEWER VIDEO INSPECTION		
SEWER ID S-MA20005262		
DISTANCE FROM MHXXX		
DISTANCE	DIAMETER	CLOCK
1.0	150	10
1.9	150	10
3.1	150	2
15.4	150	10
16.2	150	2
30.1	150	10
30.3	150	10
31.1	150	2
35.1	150	1
46.0	150	12
46.9	150	2
52.1	150	2
53.0	150 </td <td>10</td>	10
60.9	150	10
61.5	150	2
76.6	150	10
79.7	150	10
83.6	150	10
91.5	150	10
92.4	150	2



WARNING

IF POWER EQUIPMENT OR EXPLOSIVES ARE TO BE USED FOR EXCAVATION ON THIS PROJECT THE CONTRACTOR MUST:

- 1) NOTIFY THE GAS COMPANY OF THE PROPOSED LOCATION OF EXCAVATION.
- 2) TAKE PRECAUTION TO AVOID DAMAGE TO GAS COMPANY INSTALLATIONS.

SEE PROVINCIAL REGULATION 140/92 FOR DETAILS

ES ENGINEERS GEOSCIENTISTS MANITOBA
 Certificate of Authorization
 Stantec Consulting Ltd.
 No. 1301

METRIC
 WHOLE NUMBERS INDICATE MILLIMETRES
 DECIMALIZED NUMBERS INDICATE METRES

1:500

TENDER NO. 117-2020

LOCATION APPROVED UNDERGROUND STRUCTURES

SUPV. U/G STRUCTURES COMMITTEE DATE

NOTE:
 LOCATION OF UNDERGROUND STRUCTURES AS SHOWN ARE BASED ON THE BEST INFORMATION AVAILABLE BUT NO GUARANTEE IS GIVEN THAT ALL EXISTING UTILITIES ARE SHOWN OR THAT THE GIVEN LOCATIONS ARE EXACT. CONFIRMATION OF EXISTENCE AND EXACT LOCATION OF ALL SERVICES MUST BE OBTAINED FROM THE INDIVIDUAL UTILITIES BEFORE PROCEEDING WITH CONSTRUCTION.

NO.	REVISIONS	DATE	BY
2	ISSUED FOR TENDER	20.03.20	RS
1	ISSUED FOR REVIEW	20.03.09	RS

Stantec
 905 Waverley Street, Winnipeg, Manitoba
 Tel 204-489-5900 Fax 204-453-9012

DESIGNED BY	RS	CHECKED BY	RS
DRAWN BY	SC	APPROVED BY	RS
HOR. SCALE:	1:500	RELEASED FOR CONSTRUCTION:	
VERTICAL:		DATE	20.01.06

ENGINEER'S SEAL

CONSULTANT DRAWING NO. C-119

THE CITY OF WINNIPEG
 WATER AND WASTE DEPARTMENT

2019 SEWER RENEWALS BY CIPP LINING
 CONTRACT 7
DUFFIELD STREET
 1ST MH N OF LODGE AVE TO
 2ND MH N OF LODGE AVE

SHEET	OF
21	50
CAD FILE DRAWING NUMBER	
18920c-III-934.dwg	
CITY DRAWING NUMBER	
12412	

V:\1112\active\111218920\0300_drawing\0302_sheet_files\02_civil\18920c-111-934.dwg