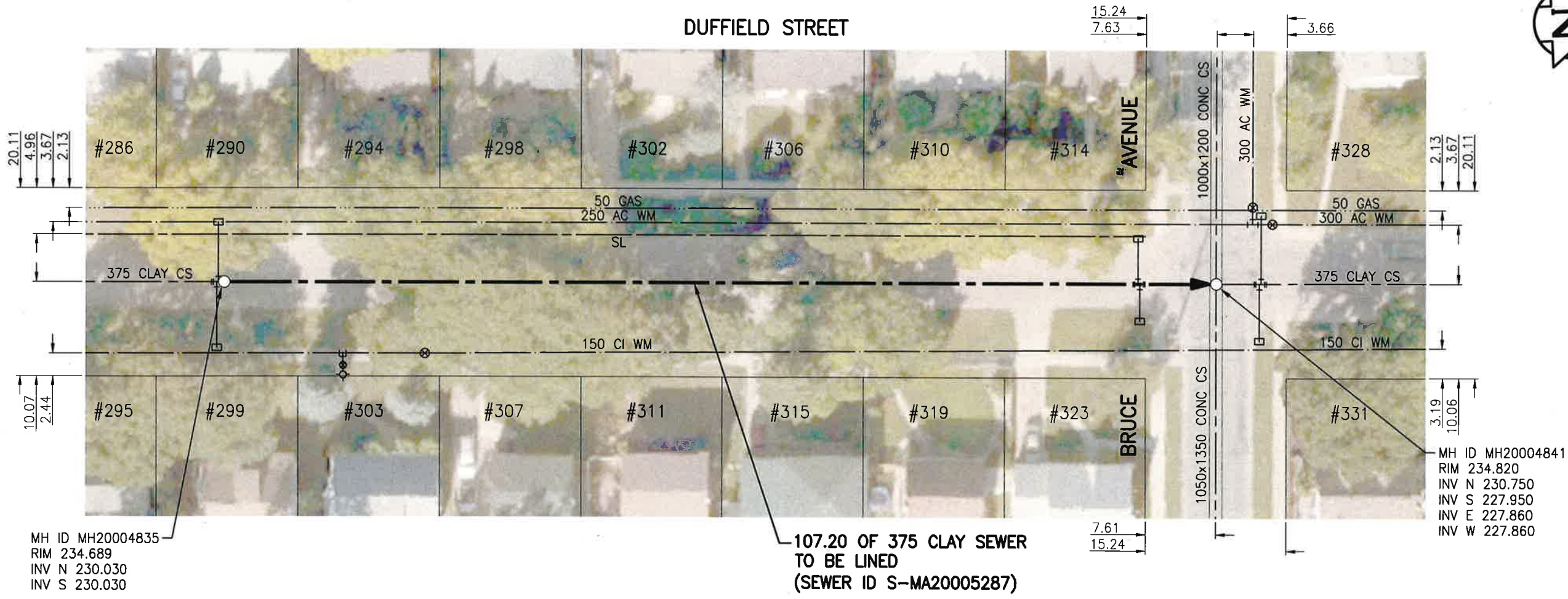




SEWER JUNCTION INFORMATION FROM SEWER VIDEO INSPECTION

SEWER ID S-MA20005287		
DISTANCE FROM MH20004835		
DISTANCE	DIAMETER	CLOCK
4.0	150	10
4.4	150	2
5.1	150	10
6.0	150	2
19.2	150	10
20.0	150	2
33.7	150	10
34.7	150	2
49.2	150	10
50.0	150	2
64.8	150	10
66.0	150	2
76.2	150	10
80.0	150	10
80.8	150	2
95.2	150	10
96.0	150	2



MH ID MH20004835  
RIM 234.689  
INV N 230.030  
INV S 230.030

107.20 OF 375 CLAY SEWER  
TO BE LINED  
(SEWER ID S-MA20005287)

MH ID MH20004841  
RIM 234.820  
INV N 230.750  
INV S 227.950  
INV E 227.860  
INV W 227.860

# WARNING

IF POWER EQUIPMENT OR EXPLOSIVES ARE TO BE USED FOR EXCAVATION ON THIS PROJECT THE CONTRACTOR MUST:

- 1) NOTIFY THE GAS COMPANY OF THE PROPOSED LOCATION OF EXCAVATION.
- 2) TAKE PRECAUTION TO AVOID DAMAGE TO GAS COMPANY INSTALLATIONS.

SEE PROVINCIAL REGULATION 140/92 FOR DETAILS

**ENGINEERS GEOSCIENTISTS MANITOBA**  
Certificate of Authorization  
Stantec Consulting Ltd.  
No. 1301

**METRIC**  
WHOLE NUMBERS INDICATE MILLIMETRES  
DECIMALIZED NUMBERS INDICATE METRES

1:500

TENDER NO. 117-2020

### LOCATION APPROVED UNDERGROUND STRUCTURES

SUPV. U/G STRUCTURES COMMITTEE	DATE

NOTE:  
LOCATION OF UNDERGROUND STRUCTURES AS SHOWN ARE BASED ON THE BEST INFORMATION AVAILABLE BUT NO GUARANTEE IS GIVEN THAT ALL EXISTING UTILITIES ARE SHOWN OR THAT THE GIVEN LOCATIONS ARE EXACT. CONFIRMATION OF EXISTENCE AND EXACT LOCATION OF ALL SERVICES MUST BE OBTAINED FROM THE INDIVIDUAL UTILITIES BEFORE PROCEEDING WITH CONSTRUCTION.

NO.	REVISIONS	DATE	BY
2	ISSUED FOR TENDER	20.03.20	RS
1	ISSUED FOR REVIEW	20.03.09	RS

**Stantec**  
905 Waverley Street, Winnipeg, Manitoba  
Tel 204-489-5900 Fax 204-453-9012

DESIGNED BY	RS	CHECKED BY	RS
DRAWN BY	SC	APPROVED BY	RS
HOR. SCALE:	1:500	RELEASED FOR CONSTRUCTION:	
VERTICAL:		DATE	MAR 15/20
DATE	20.01.06	CONSULTANT DRAWING NO.	C-120

ENGINEER'S SEAL  
PROVINCE OF MANITOBA  
MAR 20 20  
R.M. SHERLOCK  
REGISTERED PROFESSIONAL ENGINEER  
MEMBER 24045

**THE CITY OF WINNIPEG**  
WATER AND WASTE DEPARTMENT

2019 SEWER RENEWALS BY CIPP LINING  
CONTRACT 7  
**DUFFIELD STREET**  
1ST MH S OF BRUCE AVE TO  
MH AT BRUCE AVE

SHEET	OF
22	50
CAD FILE DRAWING NUMBER	
18920c-III-934.dwg	
CITY DRAWING NUMBER	
12413	

V:\1112\active\11218920\0300\_drawing\0302\_sheet\_files\02\_civil\18920c-111-934.dwg