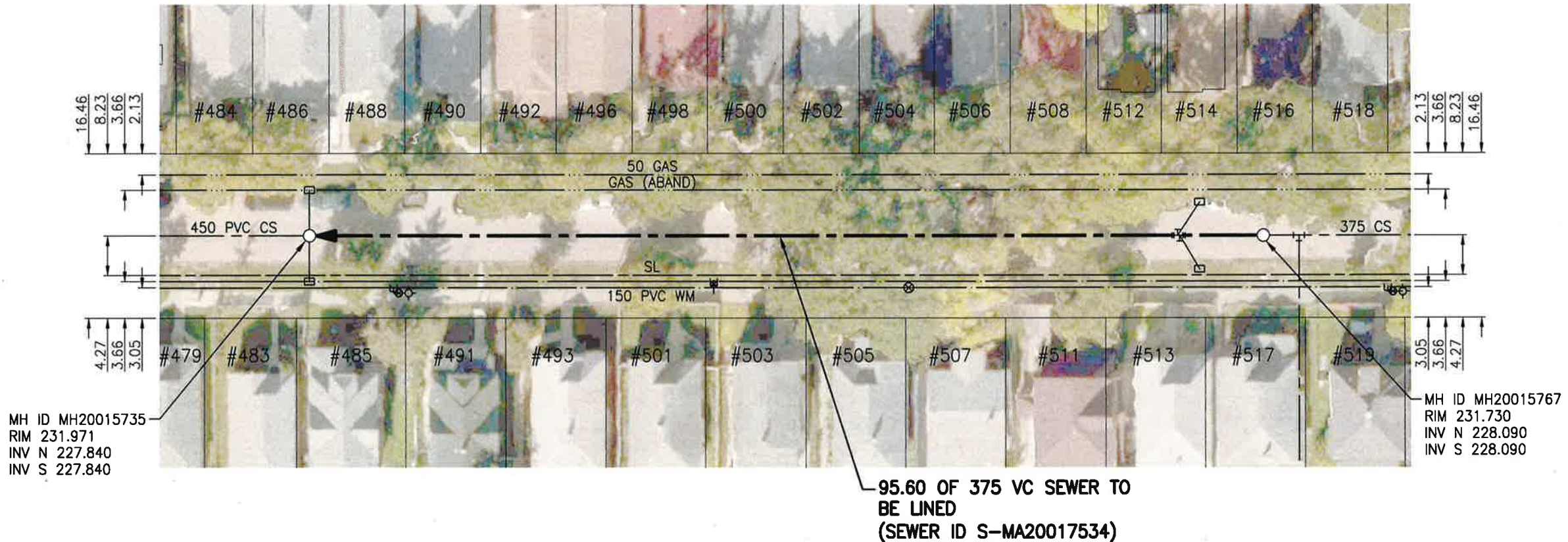




SEWER JUNCTION INFORMATION FROM SEWER VIDEO INSPECTION

SEWER ID S-MA20017534		
DISTANCE FROM MH20015767		
DISTANCE	DIAMETER	CLOCK
2.2	150	3
6.0	150	10
8.3	150	2
8.6	150	10
15.4	150	10
17.4	150	2
24.4	150	2
25.2	150	2
25.7	150	10
32.8	150	2
35.3	150	10
40.7	150	2
45.6	150	10
47.6	150	10
47.7	150	2
55.7	150	10
56.2	150	2
63.2	150	2
65.7	150	10
70.7	150	2
75.7	150	10
78.1	150	2
85.0	150	10
85.7	150	2
93.1	150	2
94.8	150	10

BEVERLEY STREET



WARNING

IF POWER EQUIPMENT OR EXPLOSIVES ARE TO BE USED FOR EXCAVATION ON THIS PROJECT THE CONTRACTOR MUST:

- 1) NOTIFY THE GAS COMPANY OF THE PROPOSED LOCATION OF EXCAVATION.
 - 2) TAKE PRECAUTION TO AVOID DAMAGE TO GAS COMPANY INSTALLATIONS.
- SEE PROVINCIAL REGULATION 140/92 FOR DETAILS

ENGINEERS GEOSCIENTISTS MANITOBA
 Certificate of Authorization
 Stantec Consulting Ltd.
 No. 1301

METRIC
 WHOLE NUMBERS INDICATE MILLIMETRES
 DECIMALIZED NUMBERS INDICATE METRES

1:500

TENDER NO. 117-2020

LOCATION APPROVED UNDERGROUND STRUCTURES

SUPV. U/G STRUCTURES COMMITTEE DATE

NOTE:
 LOCATION OF UNDERGROUND STRUCTURES AS SHOWN ARE BASED ON THE BEST INFORMATION AVAILABLE BUT NO GUARANTEE IS GIVEN THAT ALL EXISTING UTILITIES ARE SHOWN OR THAT THE GIVEN LOCATIONS ARE EXACT. CONFIRMATION OF EXISTENCE AND EXACT LOCATION OF ALL SERVICES MUST BE OBTAINED FROM THE INDIVIDUAL UTILITIES BEFORE PROCEEDING WITH CONSTRUCTION.

NO.	REVISIONS	DATE	BY
2	ISSUED FOR TENDER	20.03.20	RS
1	ISSUED FOR REVIEW	20.03.09	RS

Stantec
 905 Waverley Street, Winnipeg, Manitoba
 Tel 204-489-5900 Fax 204-453-9012

DESIGNED BY	RS	CHECKED BY	RS
DRAWN BY	SC	APPROVED BY	RS
HOR. SCALE:	1:500	RELEASED FOR CONSTRUCTION:	
VERTICAL:		DATE	20.01.06

ENGINEER'S SEAL

CONSULTANT DRAWING NO. **C-134**

THE CITY OF WINNIPEG
 WATER AND WASTE DEPARTMENT

2019 SEWER RENEWALS BY CIPP LINING
 CONTRACT 7
BEVERLEY STREET
 2ND MH N OF ELLICE AVE TO
 1ST MH N OF ELLICE AVE

SHEET	OF
36	50
CAD FILE DRAWING NUMBER	
18920c-131-934.dwg	
CITY DRAWING NUMBER	
12427	

V:\112\active\111218920\0300_drawing\0302_sheet_files\02_civil\18920c-131-934.dwg