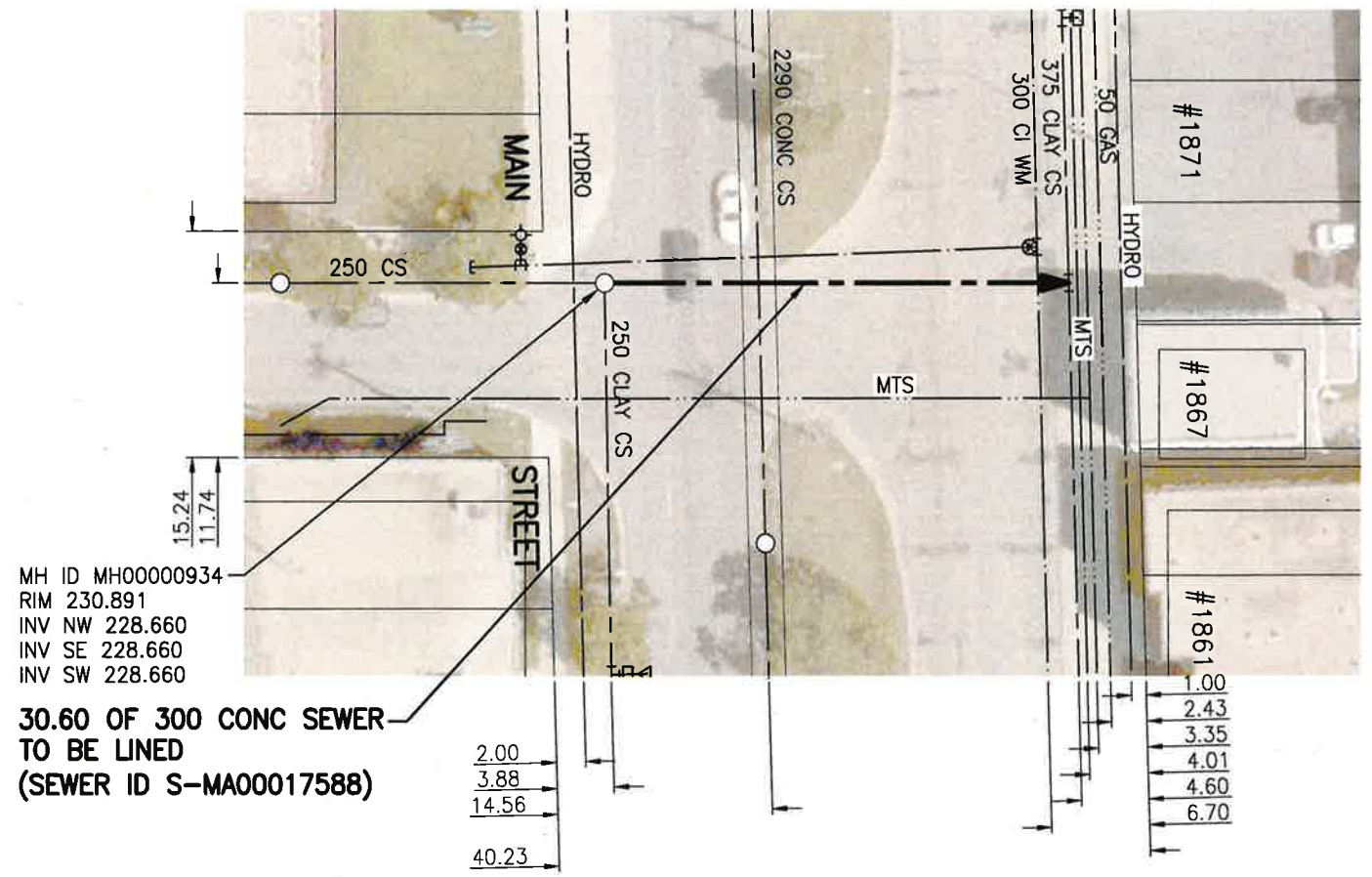




KINGSBURY AVENUE



MH ID MH00000934
 RIM 230.891
 INV NW 228.660
 INV SE 228.660
 INV SW 228.660

**30.60 OF 300 CONC SEWER
 TO BE LINED
 (SEWER ID S-MA00017588)**

2.00
 3.88
 14.56
 40.23


WARNING

IF POWER EQUIPMENT OR EXPLOSIVES ARE TO BE USED FOR EXCAVATION ON THIS PROJECT THE CONTRACTOR MUST:
 1) NOTIFY THE GAS COMPANY OF THE PROPOSED LOCATION OF EXCAVATION.
 2) TAKE PRECAUTION TO AVOID DAMAGE TO GAS COMPANY INSTALLATIONS.
 SEE PROVINCIAL REGULATION 140/92 FOR DETAILS



**ENGINEERS
 GEOSCIENTISTS
 MANITOBA**
 Certificate of Authorization
 Stantec Consulting Ltd.
 No. 1301


METRIC
 WHOLE NUMBERS INDICATE MILLIMETRES
 DECIMALIZED NUMBERS INDICATE METRES



1:500
 TENDER NO. 117-2020

V:\112\active\11218920\0300_drawing\0302_sheet_files\02_civil\18920c-141-934.dwg


LOCATION APPROVED UNDERGROUND STRUCTURES		B.M. ELEV.	
SUPV. U/G STRUCTURES COMMITTEE	DATE		
NOTE: LOCATION OF UNDERGROUND STRUCTURES AS SHOWN ARE BASED ON THE BEST INFORMATION AVAILABLE BUT NO GUARANTEE IS GIVEN THAT ALL EXISTING UTILITIES ARE SHOWN OR THAT THE GIVEN LOCATIONS ARE EXACT. CONFIRMATION OF EXISTENCE AND EXACT LOCATION OF ALL SERVICES MUST BE OBTAINED FROM THE INDIVIDUAL UTILITIES BEFORE PROCEEDING WITH CONSTRUCTION.			
2	ISSUED FOR TENDER	20.03.20	RS
1	ISSUED FOR REVIEW	20.03.09	RS
NO.	REVISIONS	DATE	BY




Stantec
 905 Waverley Street, Winnipeg, Manitoba
 Tel 204-489-5900 Fax 204-453-9012

DESIGNED BY	RS	CHECKED BY	RS
DRAWN BY	SC	APPROVED BY	RS
HOR. SCALE:	1:500	RELEASED FOR CONSTRUCTION:	
VERTICAL:		DATE	20.01.06

ENGINEER'S SEAL
 PROVINCE OF MANITOBA
 REGISTERED PROFESSIONAL ENGINEER
 R.M. SHERLOCK
 MEMBER 24045



CONSULTANT DRAWING NO.
C-147



THE CITY OF WINNIPEG
 WATER AND WASTE DEPARTMENT

2019 SEWER RENEWALS BY CIPP LINING
 CONTRACT 7
KINGSBURY AVENUE
 MH AT MAIN ST (W OF CL) TO
 NODE AT MAIN ST (E OF CL)

SHEET	OF
49	50
CAD FILE DRAWING NUMBER 18920c-141-934.dwg	
CITY DRAWING NUMBER 12440	