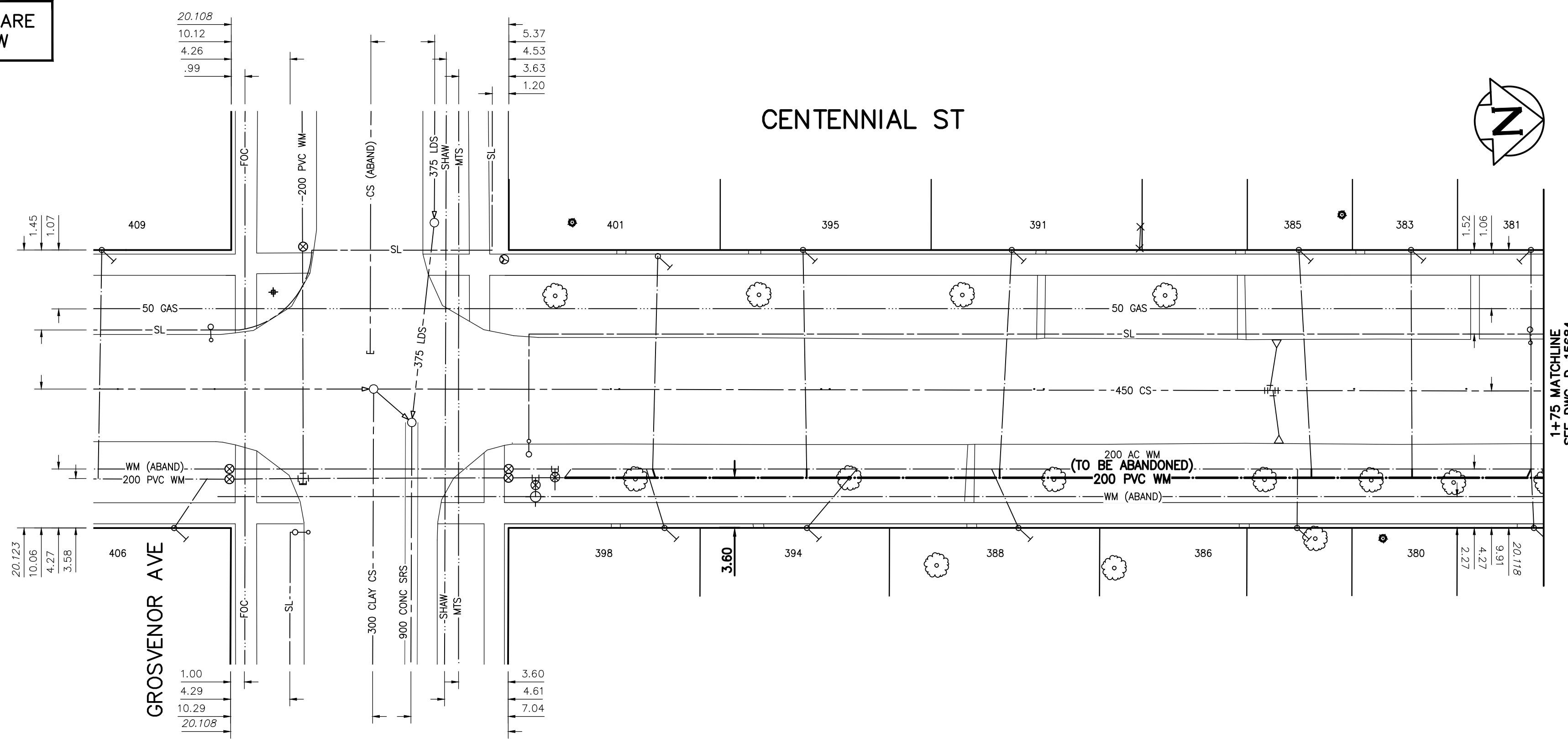


NOTE: CHAINAGES SHOWN ARE ALONG CENTRE LINE OF ROW

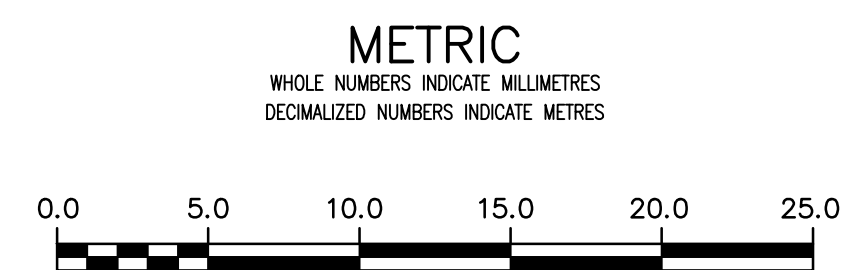


WATER SERVICE INFORMATION

ADDRESS	PIPE SIZE & MATERIAL (STREET)	PIPE SIZE & MATERIAL (PROP.)	SHORT & LONG MEASUREMENT	CORP. LOCATION	REMARKS
409 CENTENNIAL ST	-	20	4.6 MN/SHL	0.2 S/SC	OUTSIDE LIMITS
RESIDENTIAL	-	CU	31.0 S HYD @ 398 CENTENNIAL ST	-	-
406 CENTENNIAL ST	20	20	1.5 MS/NHL	2.3 N/SC	OUTSIDE LIMITS
RESIDENTIAL	CU	CU	26.2 S HYD @ 398 CENTENNIAL ST	-	-
401 CENTENNIAL ST	20	20	172.7 S NPL 339 CENTENNIAL ST	8.6 N HYD @ 398 CENTENNIAL ST	RECONNECT SERVICE
RESIDENTIAL	CU	CU	10.98 N/NL GROSVENOR AVE	-	-
398 CENTENNIAL ST	20	20	164.0 S NPL 348 CENTENNIAL ST	8.15 N HYD @ 398 CENTENNIAL ST	RECONNECT SERVICE
RESIDENTIAL	CU	CU	11.43 N/NL GROSVENOR AVE	-	-
395 CENTENNIAL ST	20	20	2.9 NSBL 395 CENTENNIAL ST	-	RECONNECT SERVICE
RESIDENTIAL	CU	CU	6.0 NSLL #395 CENTENNIAL ST	-	-
394 CENTENNIAL ST	20	20	153.7 S NPL 348 CENTENNIAL ST	23.4 N HYD @ 398 CENTENNIAL ST	RECONNECT SERVICE
RESIDENTIAL	CU	CU	21.49 N/NL GROSVENOR AVE	-	-
391 CENTENNIAL ST	20	20	146.8 S NPL 339 CENTENNIAL ST	33.7 N HYD @ 398 CENTENNIAL ST	RECONNECT SERVICE
RESIDENTIAL	CU	CU	36.74 N/NL GROSVENOR AVE	-	-
390 CENTENNIAL ST	20	20	138.9 S NPL 348 CENTENNIAL ST	33.1 N HYD @ 398 CENTENNIAL ST	RECONNECT SERVICE
RESIDENTIAL	CU	CU	37.04 N/NL GROSVENOR AVE	-	-
386 CENTENNIAL ST	20	20	118.3 S NPL 348 CENTENNIAL ST	34.9 S HYD OPP 371 CENTENNIAL ST	RECONNECT SERVICE
RESIDENTIAL	CU	CU	57.77 N/NL GROSVENOR AVE	-	-
385 CENTENNIAL ST	12	12	125.49 S NPL 339 CENTENNIAL ST	33.9 S HYD OPP 371 CENTENNIAL ST	RECONNECT SERVICE
RESIDENTIAL	CU	LEAD	58.23 N/NL GROSVENOR AVE	-	-
383 CENTENNIAL ST	20	20	3.1 NSBL	3.3 NSBL	RECONNECT SERVICE
RESIDENTIAL	CU	CU	-	-	-
381 CENTENNIAL ST	-	-	2.3 SNLL	-	RECONNECT SERVICE
RESIDENTIAL	-	-	-	-	-
380 CENTENNIAL ST	-	20	101.1 S NPL 348 CENTENNIAL ST	17.9 S HYD OPP 371 CENTENNIAL ST	RECONNECT SERVICE
RESIDENTIAL	CU	CU	74.39 N/NL GROSVENOR AVE	-	-

* SERVICES TO BE RENEWED TO R

NOTE: VALVES TO BE INSTALLED COUNTER-CLOCKWISE TO CLOSE



LOCATION APPROVED UNDERGROUND STRUCTURES		B.M. Z51-35 ELEV. 234.061		S.E. Cor. Kingsway & Beaverbrook St., Brass plug in 7.3m Conc. pile 2.5m N. of S.L. Kingsway & 0.6m E. of E.L. Beaverbrook St.	
SUPV. U/G STRUCTURES COMMITTEE	DATE				
NOTE: LOCATION OF UNDERGROUND STRUCTURES AS SHOWN ARE BASED ON THE BEST INFORMATION AVAILABLE BUT NO GUARANTEE IS GIVEN THAT ALL EXISTING UTILITIES ARE SHOWN OR THAT THE GIVEN LOCATIONS ARE EXACT. CONFIRMATION OF EXISTENCE AND EXACT LOCATION OF ALL SERVICES MUST BE OBTAINED FROM THE INDIVIDUAL UTILITIES BEFORE PROCEEDING WITH CONSTRUCTION.					
NO.	REVISIONS	DATE	BY		
02	ISSUED FOR TENDER	2020.04.01	RS		
01	ISSUED FOR 60% REVIEW	2020.03.09	RS		



DESIGNED BY	RS	CHECKED BY	RS
DRAWN BY	SC	APPROVED BY	RS
SCALE: HORIZONTAL 1:250 VERTICAL 1:50		RELEASED FOR CONSTRUCTION	
DATE	2019.01.15	DATE	

ENGINEER'S SEAL
ORIGINAL SEALED BY R.M. SHERLOCK P. ENG. 2020/04/01
CONSULTANT DRAWING NUMBER C-202

THE CITY OF WINNIPEG
WATER AND WASTE DEPARTMENT
ENGINEERING DIVISION

2020 WATERMAIN RENEWALS
CONTRACT 2
CENTENNIAL STREET
GROSVENOR AVE TO
STA. 1+75

SHEET 04 OF 19
CITY DRAWING NUMBER D-15683