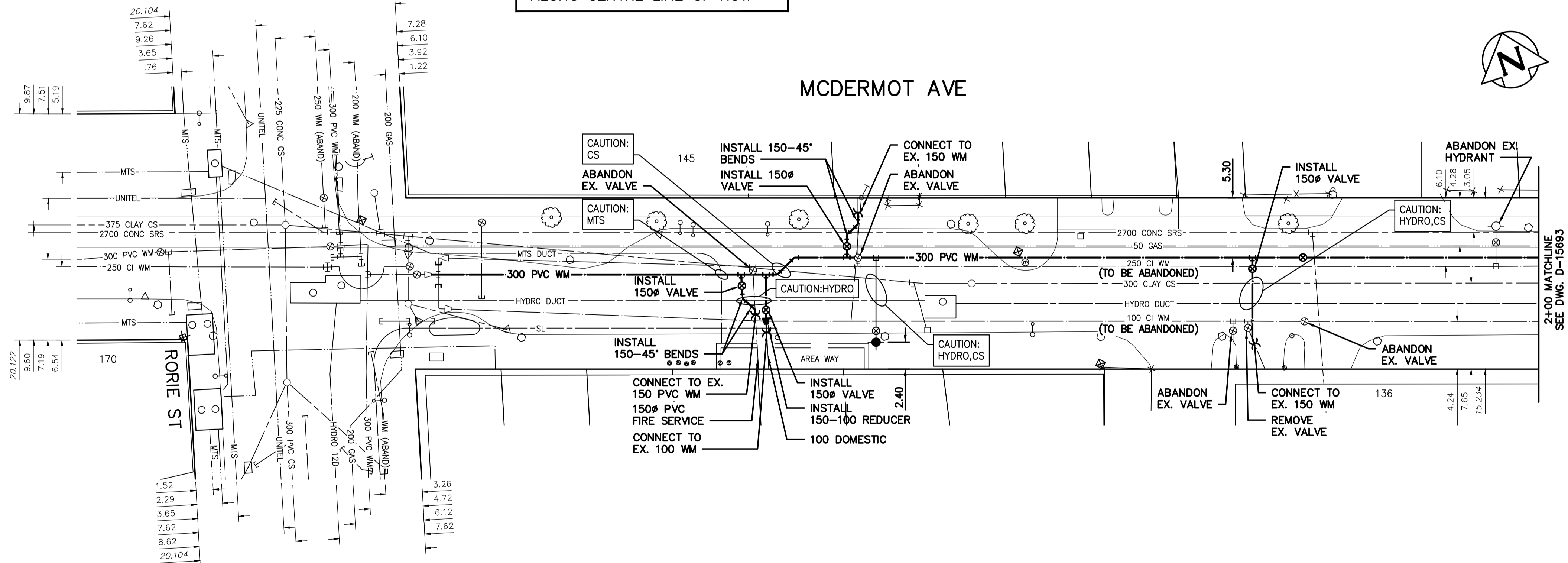


NOTE: CHAINAGES SHOWN ARE ALONG CENTRE LINE OF ROW

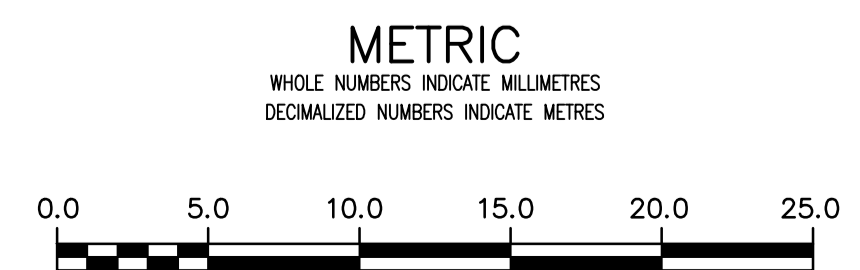


WATER SERVICE INFORMATION

ADDRESS	PIPE SIZE & MATERIAL (STREET)	PIPE SIZE & MATERIAL (PROP.)	SHORT & LONG MEASUREMENT	CORP. LOCATION	REMARKS
145 MCDERMOT ST	50	50	28.05 WEL BUILDING	0.91 W CS	RECONNECT SERVICE
COMMERCIAL	CU	CU	40.55 EEL PORTAGE AVE		

\* SERVICES TO BE RENEWED TO R

NOTE: VALVES TO BE INSTALLED COUNTER-CLOCKWISE TO CLOSE



LOCATION APPROVED UNDERGROUND STRUCTURES

SUPV. U/G STRUCTURES COMMITTEE DATE

NOTE: LOCATION OF UNDERGROUND STRUCTURES AS SHOWN ARE BASED ON THE BEST INFORMATION AVAILABLE BUT NO GUARANTEE IS GIVEN THAT ALL EXISTING UTILITIES ARE SHOWN OR THAT THE GIVEN LOCATIONS ARE EXACT. CONFIRMATION OF EXISTENCES AND EXACT LOCATION OF ALL SERVICES MUST BE OBTAINED FROM THE INDIVIDUAL UTILITIES BEFORE PROCEEDING WITH CONSTRUCTION.

B.M. 74M601 ELEV. 232.063	Chrome Tblt. in Ely. wall of The Richardson Bldg., No. 1 Lombard Place, 4.1m N. of S.Ely. Cor. of Bldg.		
02	ISSUED FOR TENDER	2020.04.01	RS
01	ISSUED FOR 60% REVIEW	2020.03.09	RS
NO.	REVISIONS	DATE	BY

DESIGNED BY: RS  
CHECKED BY: RS

DRAWN BY: SC  
APPROVED BY: RS

SCALE: HORIZONTAL 1:250  
VERTICAL 1:50

DATE: 2019.01.15

ENGINEER'S SEAL

ORIGINAL SEALED BY  
R.M. SHERLOCK  
P. ENG.  
2020/04/01

CONSULTANT DRAWING NUMBER  
C-211

**THE CITY OF WINNIPEG**  
WATER AND WASTE DEPARTMENT  
ENGINEERING DIVISION

2020 WATERMAIN RENEWALS  
CONTRACT 2  
MCDERMOT AVENUE  
RORIE ST TO  
STA. 2+00

SHEET 13 OF 19  
CITY DRAWING NUMBER  
D-15692