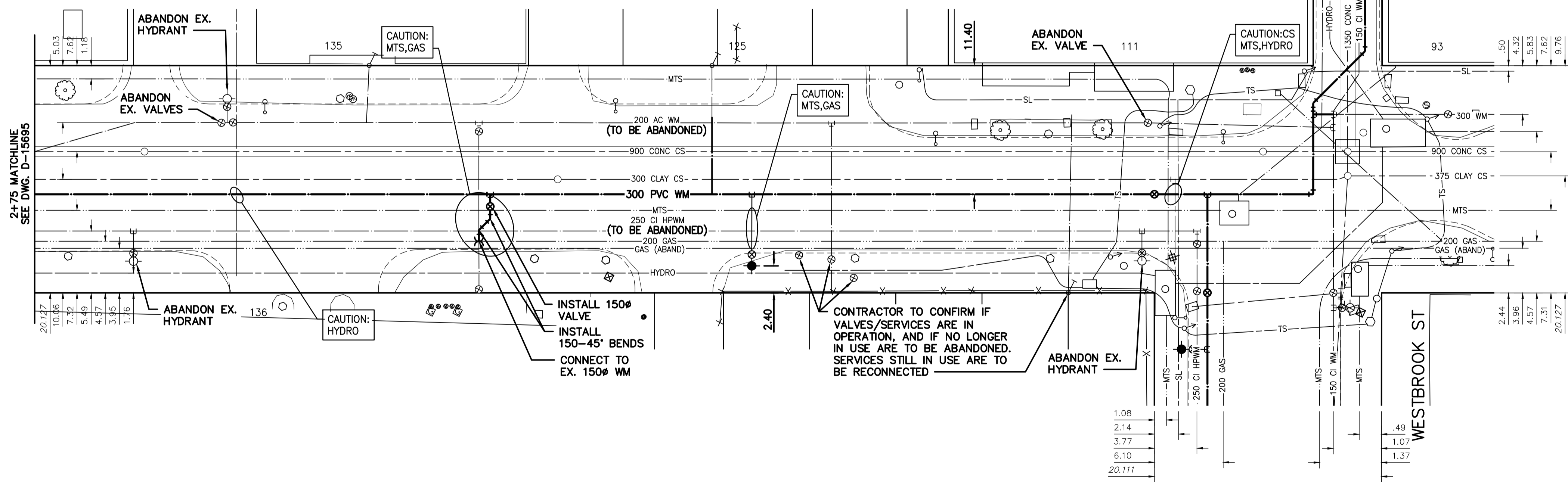


NOTE: CHAINAGES SHOWN ARE ALONG CENTRE LINE OF ROW

FOR CONTINUATION SEE DWG. D-15698

LOMBARD AVENUE

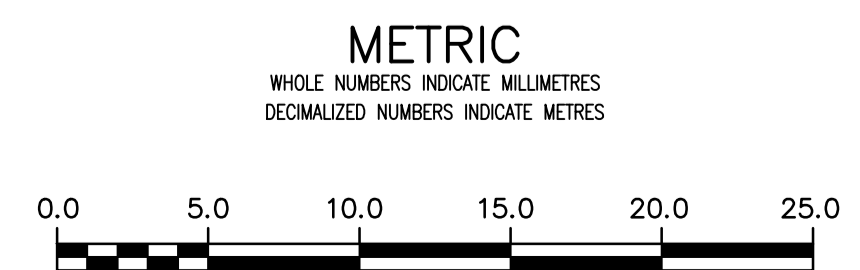


WATER SERVICE INFORMATION

ADDRESS	PIPE SIZE & MATERIAL (STREET)	PIPE SIZE & MATERIAL (PROP.)	SHORT & LONG MEASUREMENT	CORP. LOCATION	REMARKS
93 LOMBARD AVE	38	38	42.5 WEL OF BLDG	1.00 E S/C	OUTSIDE LIMITS
COMMERCIAL	CU	CU	73.0 EEL WESTBROOK		
120 LOMBARD AVE	20	20	24.0 WEL BLDG	1.00 E OF S/C	CONTRACTOR TO CONFIRM EX. SERVICE STATUS
COMMERCIAL	CU	LEAD	25.0 WWL WESTBROOK		

* SERVICES TO BE RENEWED TO R

NOTE: VALVES TO BE INSTALLED COUNTER-CLOCKWISE TO CLOSE



LOCATION APPROVED UNDERGROUND STRUCTURES		B.M. 74M601 ELEV. 232.063		Chrome Tblt. in Ely. wall of The Richardson Bldg., No. 1 Lombard Place, 4.1m N. of S.Ely. Cor. of Bldg.	
SUPV. U/G STRUCTURES COMMITTEE	DATE				
NOTE: LOCATION OF UNDERGROUND STRUCTURES AS SHOWN ARE BASED ON THE BEST INFORMATION AVAILABLE BUT NO GUARANTEE IS GIVEN THAT ALL EXISTING UTILITIES ARE SHOWN OR THAT THE GIVEN LOCATIONS ARE EXACT. CONFIRMATION OF EXISTENCE AND EXACT LOCATION OF ALL SERVICES MUST BE OBTAINED FROM THE INDIVIDUAL UTILITIES BEFORE PROCEEDING WITH CONSTRUCTION.					
02	ISSUED FOR TENDER	2020.04.01	RS		
01	ISSUED FOR 60% REVIEW	2020.03.09	RS		
NO.	REVISIONS	DATE	BY		

Stantec

DESIGNED BY	RS	CHECKED BY	RS
DRAWN BY	SC	APPROVED BY	RS
SCALE:		RELEASED FOR CONSTRUCTION	
HORIZONTAL	1:250	DATE	2019.01.15
VERTICAL	1:50		

ENGINEER'S SEAL
ORIGINAL SEALED BY
R.M. SHERLOCK
P. ENG.
2020/04/01

THE CITY OF WINNIPEG
WATER AND WASTE DEPARTMENT
ENGINEERING DIVISION

2020 WATERMAIN RENEWALS
CONTRACT 2
LOMBARD AVENUE
STA. 2+75 TO WESTBROOK ST

SHEET 17 OF 19
CITY DRAWING NUMBER
D-15696

CONSULTANT DRAWING NUMBER
C-215