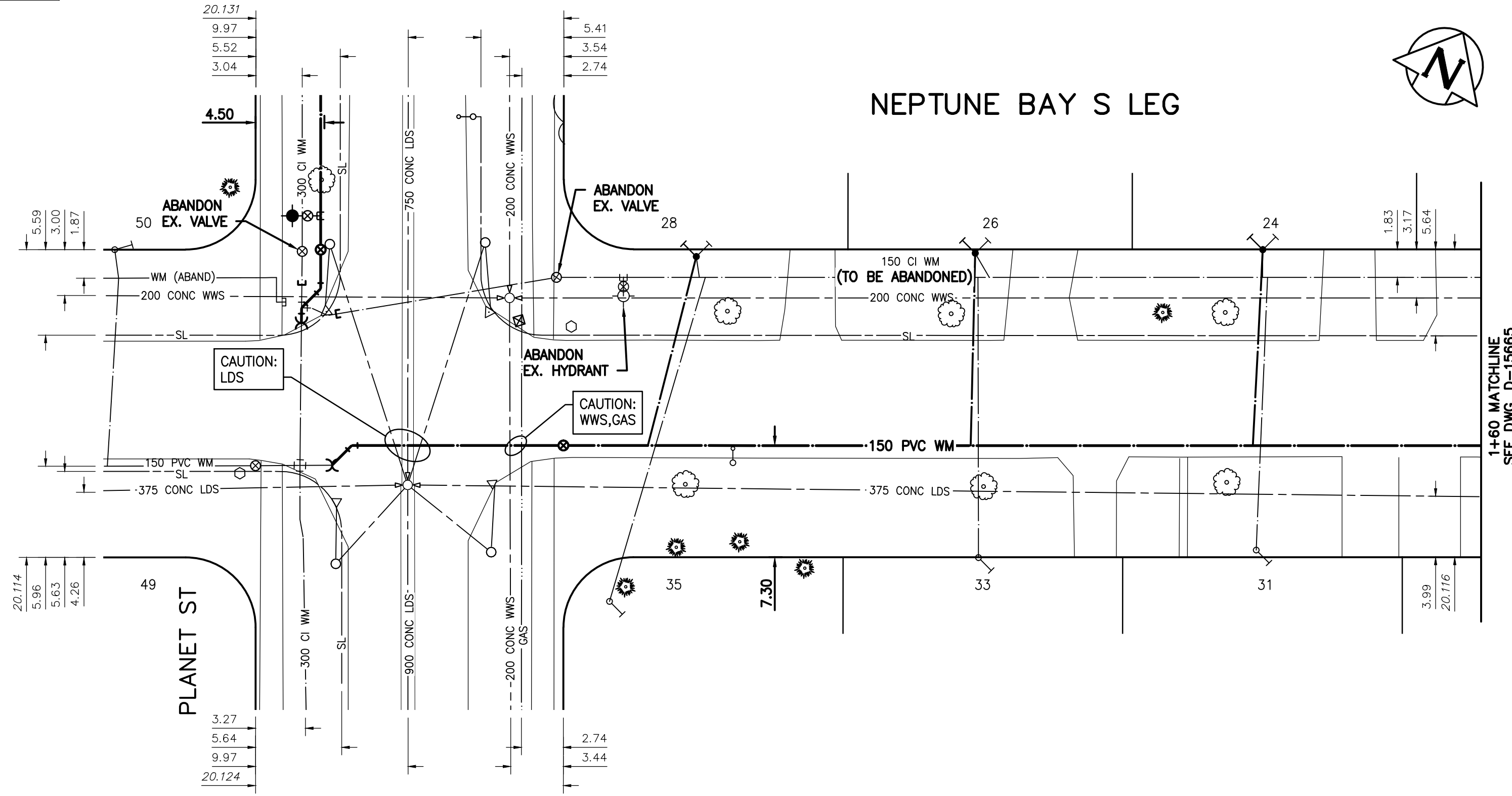


NOTE: CHAINAGES SHOWN ARE ALONG CENTRE LINE OF ROW

SEE DWG. D-15661 FOR CONTINUATION

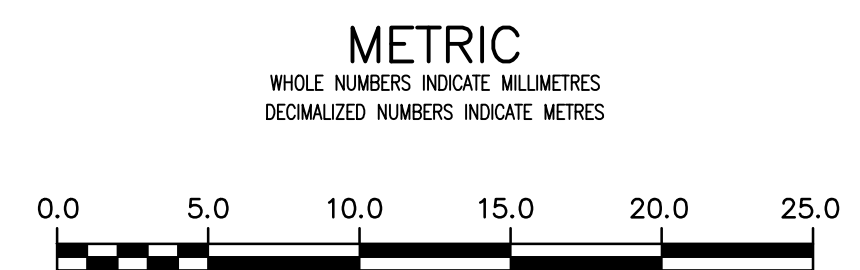


WATER SERVICE INFORMATION

ADDRESS	PIPE SIZE & MATERIAL (STREET)	PIPE SIZE & MATERIAL (PROP.)	SHORT & LONG MEASUREMENT	CORP. LOCATION	REMARKS
* 24 NEPTUNE BAY	-	-	8.50 EWLL	0.30 E/SC	RENEW SERVICE
RESIDENTIAL	-	-	45.60 EEL PLANET ST		
* 26 NEPTUNE BAY	20	20	8.30 EWLL	22.55 E OF HYD	RENEW SERVICE
RESIDENTIAL	-	CU	26.80 EEL PLANET ST		
* 28 NEPTUNE BAY	-	-	9.90 WELL	15.90 E HYD	RENEW SERVICE
RESIDENTIAL	-	-	29.00 EWLL PLANET ST		
31 NEPTUNE BAY	-	-	8.70 EWLL	138.10 E HYD	RECONNECT SERVICE
RESIDENTIAL	-	-	45.10 EEL PLANET ST		
33 NEPTUNE BAY	-	-	8.90 EWLL	76.00 E HYD	RECONNECT SERVICE
RESIDENTIAL	-	-	26.90 EEL PLANET ST		
35 NEPTUNE BAY	-	-	2.70 EWLL	17.50 E HYD	RECONNECT SERVICE
RESIDENTIAL	-	-	22.80 EWLL PLANET ST		
49 SATURN BAY	20	-	6.20 EWLL	108.70 W HYD	OUTSIDE LIMITS
RESIDENTIAL	CU	-	11.40 WELL		
50 SATURN BAY	20	20	-	-	OUTSIDE LIMITS
RESIDENTIAL	CU	CU	-	-	

\* SERVICES TO BE RENEWED TO R

NOTE: VALVES TO BE INSTALLED CLOCKWISE TO CLOSE



LOCATION APPROVED UNDERGROUND STRUCTURES		B.M. 84R551 S.W. Cor. Parker Ave. & Planet St., Brass ELEV. 232.293 plug in 12.5 m Conc. pile, 2.6 m E. of W.L. Planet	
SUPV. U/G STRUCTURES COMMITTEE	DATE		
NOTE: LOCATION OF UNDERGROUND STRUCTURES AS SHOWN ARE BASED ON THE BEST INFORMATION AVAILABLE BUT NO GUARANTEE IS GIVEN THAT ALL EXISTING UTILITIES ARE SHOWN OR THAT THE GIVEN LOCATIONS ARE EXACT. CONFIRMATION OF EXISTENCE AND EXACT LOCATION OF ALL SERVICES MUST BE OBTAINED FROM THE INDIVIDUAL UTILITIES BEFORE PROCEEDING WITH CONSTRUCTION.			
NO.	REVISIONS	DATE	BY
02	ISSUED FOR TENDER	2020.04.01	RS
01	ISSUED FOR 60% REVIEW	2020.03.09	RS

**Stantec**

DESIGNED BY	RS	CHECKED BY	RS
DRAWN BY	SC	APPROVED BY	RS
SCALE:		RELEASED FOR CONSTRUCTION	
HORIZONTAL	1:250	DATE	2019.01.15
VERTICAL	1:50		

PLOT DATE: 2020 04 01

ENGINEER'S SEAL

ORIGINAL SEALED BY  
R.M. SHERLOCK  
P. ENG.  
2020/04/01

CONSULTANT DRAWING NUMBER  
C-205

TENDER NUMBER: 119-2020

**THE CITY OF WINNIPEG**  
WATER AND WASTE DEPARTMENT  
ENGINEERING DIVISION

2020 WATERMAIN RENEWALS  
CONTRACT 4  
NEPTUNE BAY S LEG  
PLANET ST TO  
STA. 1+60

SHEET 07 OF 22  
CITY DRAWING NUMBER  
D-15664

FILE PATH: V:\1112\active\111219000\0300\_drawing\0302\_sheet\_files\02\_civil\