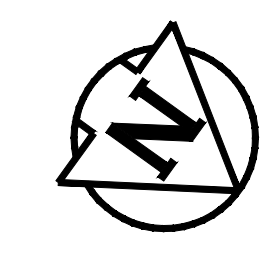


ST VITAL PARK ROAD - ASPHALT RECONSTRUCTION CROSS SECTION
N.T.S.



CONSTRUCTION NOTES

1. REMOVE EXISTING PAVEMENT AND CONSTRUCT NEW 100mm ASPHALT PAVEMENT AS PER DETAILED CROSS SECTION
2. MILL EXISTING ASPHALT AND OVERLAY WITH 80mm ASPHALT PAVEMENT AS PER DETAILED CROSS SECTION
3. REMOVE AND REPLACE EXISTING ASPHALT
4. CONSTRUCT NEW 100mm CONCRETE SIDEWALK
5. REMOVE EXISTING SIDEWALK
6. WIDEN EXISTING APPROACH TO 7.5m & CONSTRUCT NEW 200mm MONOLITHIC CONCRETE CURB
7. REMOVE PARK GATE
8. REMOVE POST BOLLARD
9. INSTALL NEW CULVERT
10. INSTALL CURB RAMP (10mm HT. MONOLITHIC) & DETECTABLE WARNING TILES
11. REMOVE & REPLACE CULVERT
12. REMOVE EXISTING ASPHALT DITCH
13. REMOVE EXISTING ASPHALT DITCH & CONSTRUCT NEW PROPOSED DITCH
14. RE-GRADE EXISTING DITCH

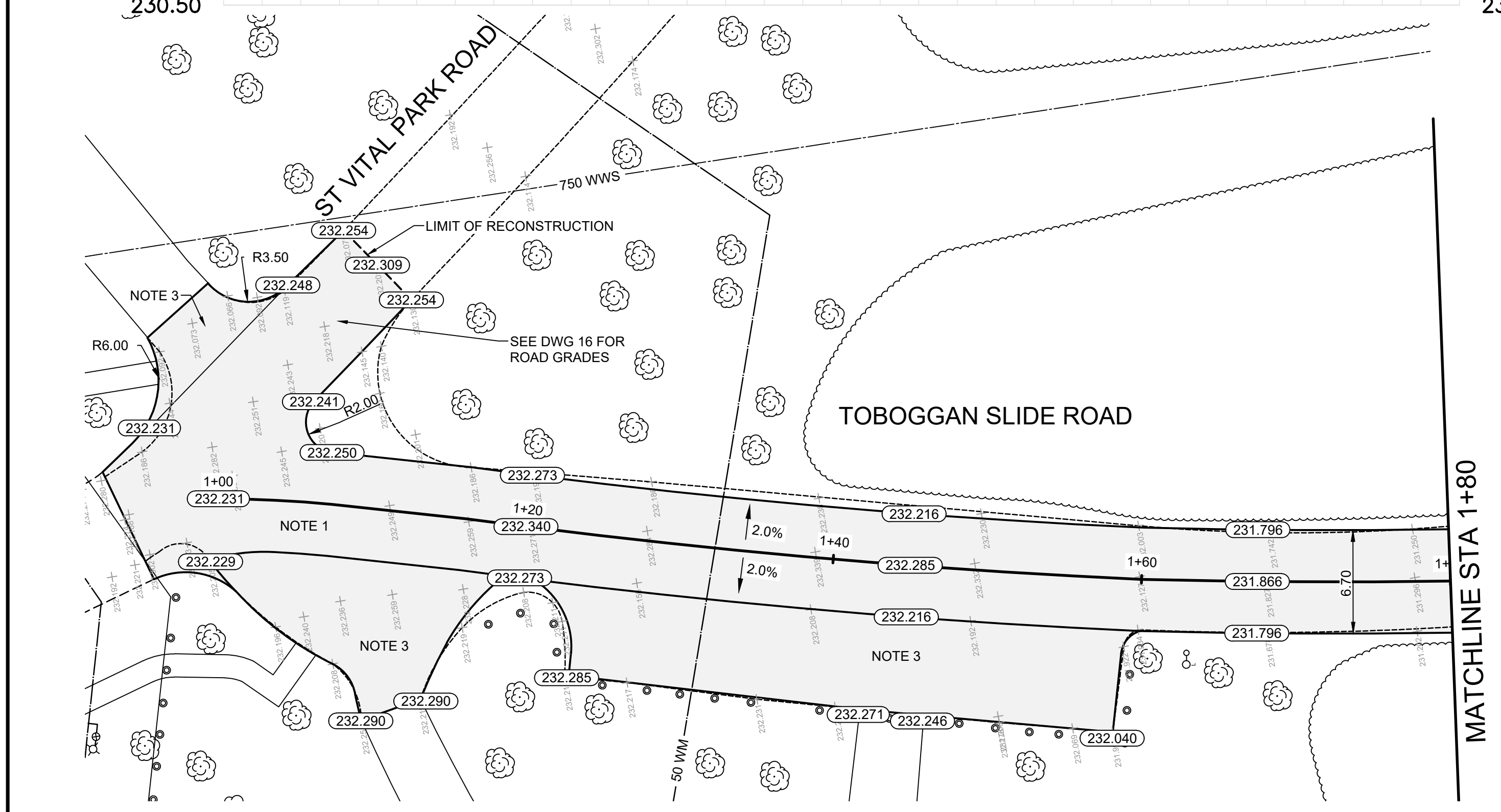
GENERAL NOTES

- A. PAVEMENT DIMENSIONS ARE TO BACK OF CURB / EDGE OF PAVEMENT
- B. ALL CURB RADII UNDER 15.0m SHALL BE MODIFIED
- C. CURB REPLACEMENT AS DIRECTED BY CONTRACT ADMINISTRATOR

PRELIMINARY
NOT TO BE USED FOR
CONSTRUCTION

METRIC
WHOLE NUMBERS INDICATE MILLIMETERS
DECIMALIZED NUMBERS INDICATE METERS

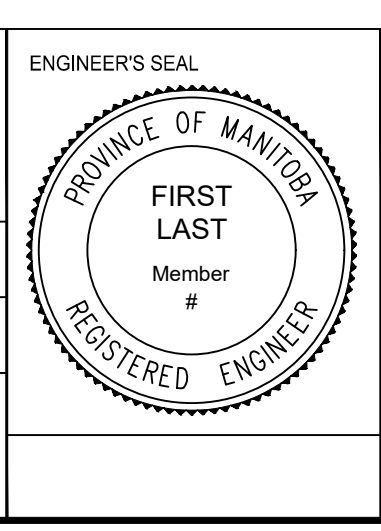
BID OPPORTUNITY NO. 129-2020



⊕	HYDRANT	◆	---	LDS/WWS	---	---	CONCRETE	---
⊗	VALVE	●	---	WATERMAIN	---	---	CONCRETE SIDEWALK	---
⊙	CURB STOP	●	---	GAS	---	---	ASPHALT	---
○	MANHOLE	●	---	TRAFFIC SIGNALS	---	---	GRAVEL	---
□	CATCH BASIN	■	---	HYDRO/STREET LIGHT	---	---	DITCH - TOP OF SLOPE	---
△	CURB INLET	▲	---	MTS/SHAW	---	---	BUSHLINE	---
○	HYDRO POLE	▲	---	CURB RENEWAL	---	---	NORTH GUTTER	---
○	LIGHT STANDARD	●	---	PROPERTY LINE	---	---	CENTER LINE	---
○	TRAFFIC SIGNAL POLE	●	---	RAMP CURB	---	---	SOUTH GUTTER	---
+	SURVEY BAR	+	---	ELEVATIONS	(31.000)	---	NORTH DITCH	---
⊕	GEODETIC BENCH MARK	⊕	---	TREE	---	---	SOUTH DITCH	---
---	EXISTING	---	---	LEGEND - PLAN	---	---	LEGEND - PROFILE	---
---	LEGEND - PLAN	---	---	PROPOSED	---	---	PROPOSED	---

LOCATION APPROVED		B.M.	ENGINEERING DIVISION	
UNDERGROUND STRUCTURES		ELEV.	TECHNOLOGY SERVICES BRANCH	
			106 - 1155 PACIFIC AVE	
SUPR. U/G STRUCTURES COMMITTEE		DATE	DESIGNED BY	M.S.
NOTE:			CHECKED BY	M.S.
LOCATION OF UNDERGROUND STRUCTURES AS SHOWN ARE BASED ON THE BEST INFORMATION AVAILABLE BUT NO GUARANTEE IS GIVEN THAT ALL EXISTING UTILITIES ARE SHOWN OR THAT THE GIVEN LOCATIONS ARE EXACT.			DRAWN BY	T.G.
CONFIRMATION OF EXISTENCE AND EXACT LOCATION OF ALL SERVICES MUST BE OBTAINED FROM THE INDIVIDUAL UTILITIES BEFORE PROCEEDING WITH CONSTRUCTION.			APPROVED BY	
1	SUBMIT FOR PLAN APPROVAL	03/11/20	C.H.	
NO.	REVISIONS	DATE	BY	

ENGINEERING DIVISION	
TECHNOLOGY SERVICES BRANCH	
106 - 1155 PACIFIC AVE	
DESIGNED BY	M.S.
CHECKED BY	M.S.
DRAWN BY	T.G.
APPROVED BY	
HOR. SCALE:	1 : 250
VERTICAL:	1 : 10
DATE	2020/04/08



THE CITY OF WINNIPEG
PUBLIC WORKS DEPARTMENT

TOBOGGAN SLIDE ROAD
FROM ST VITAL PARK ROAD TO ST VITAL PARK ROAD
ASPHALT RENEWAL AND ASSOCIATED WORKS
FROM STA. 1+00 TO STA. 1+80

CITY DRAWING NUMBER
SE-20-100
SHEET 2 OF 21
1