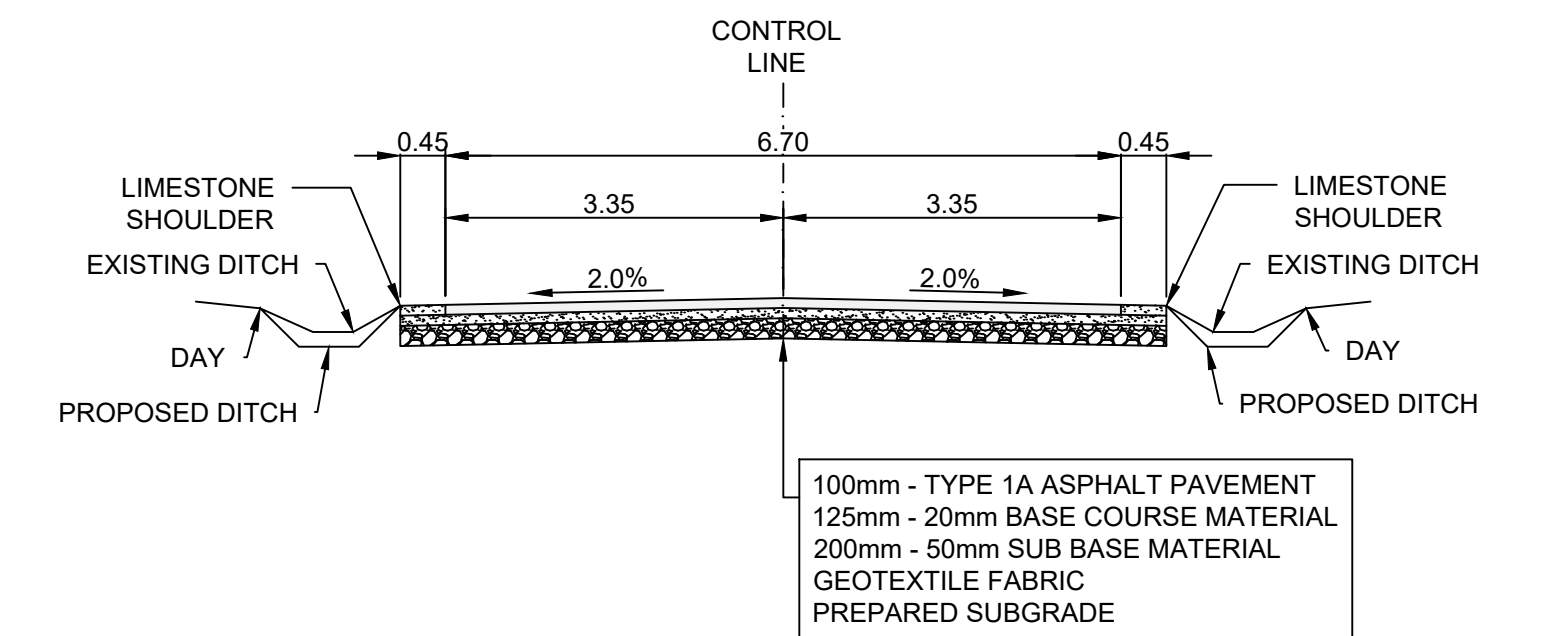
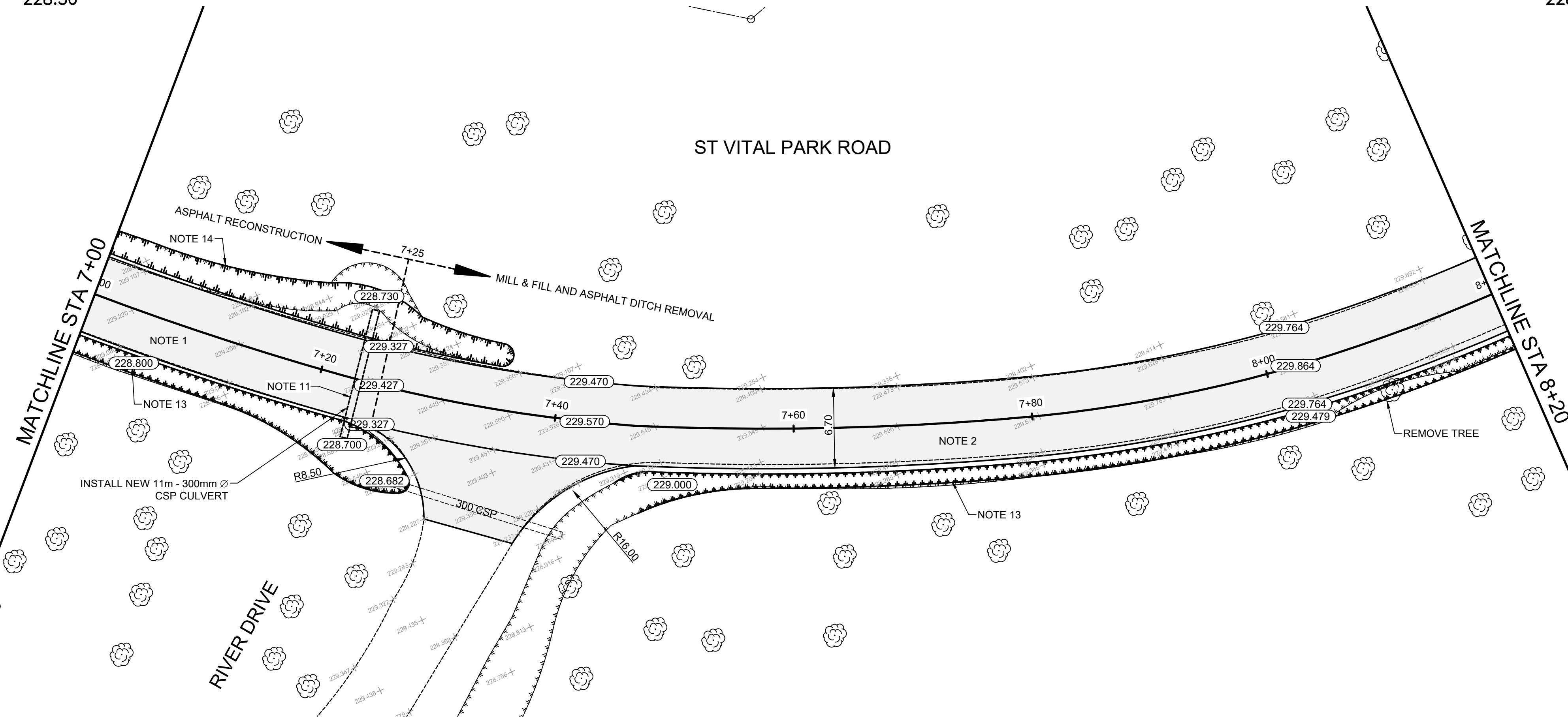
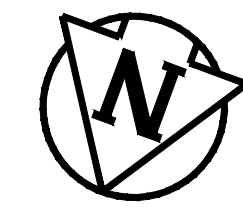


ST VITAL PARK ROAD - MILL & FILL AND ASPHALT DITCH REMOVAL CROSS SECTION (STA: 7+35 - 11+43)  
N.T.S.



ST VITAL PARK ROAD - ASPHALT RECONSTRUCTION CROSS SECTION (STA: 6+80 - 7+35)  
N.T.S.



**CONSTRUCTION NOTES**

1. REMOVE EXISTING PAVEMENT AND CONSTRUCT NEW 100mm ASPHALT PAVEMENT AS PER DETAILED CROSS SECTION
2. MILL EXISTING ASPHALT AND OVERLAY WITH 80mm ASPHALT PAVEMENT AS PER DETAILED CROSS SECTION
3. REMOVE AND REPLACE EXISTING ASPHALT
4. CONSTRUCT NEW 100mm CONCRETE SIDEWALK
5. REMOVE EXISTING SIDEWALK
6. WIDEN EXISTING APPROACH TO 7.5m & CONSTRUCT NEW 200mm MONOLITHIC CONCRETE CURB
7. REMOVE PARK GATE
8. REMOVE POST BOLLARD
9. INSTALL NEW CULVERT
10. INSTALL CURB RAMP (10mm HT. MONOLITHIC) & DETECTABLE WARNING TILES
11. REMOVE & REPLACE CULVERT
12. REMOVE EXISTING ASPHALT DITCH
13. REMOVE EXISTING ASPHALT DITCH & CONSTRUCT NEW PROPOSED DITCH
14. RE-GRADE EXISTING DITCH

**GENERAL NOTES**

- A. PAVEMENT DIMENSIONS ARE TO BACK OF CURB / EDGE OF PAVEMENT
- B. ALL CURB RADII UNDER 15.0m SHALL BE MODIFIED
- C. CURB REPLACEMENT AS DIRECTED BY CONTRACT ADMINISTRATOR

**PRELIMINARY**

NOT TO BE USED FOR CONSTRUCTION

**METRIC**

WHOLE NUMBERS INDICATE MILLIMETERS  
DECIMALIZED NUMBERS INDICATE METERS

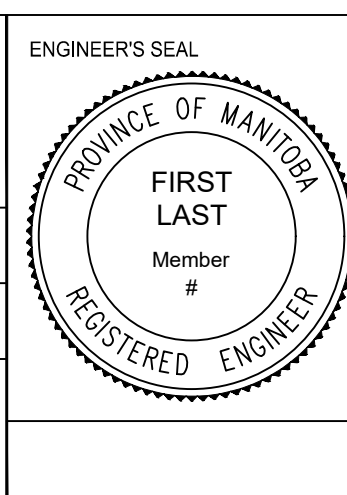
BID OPPORTUNITY NO. 129-2020

EXISTING	LEGEND - PLAN	PROPOSED	EXISTING	LEGEND - PLAN	PROPOSED	EXISTING	LEGEND - PROFILE	PROPOSED
⊕	HYDRANT	⊕	---	LDS/WWS	---	---	CONCRETE	---
⊗	VALVE	⊗	---	WATERMAIN	---	---	CONCRETE SIDEWALK	---
⊙	CURB STOP	⊙	---	GAS	---	---	ASPHALT	---
○	MANHOLE	●	---	TRAFFIC SIGNALS	---	---	GRAVEL	---
□	CATCH BASIN	■	---	HYDRO/STREET LIGHT	---	---	DITCH - TOP OF SLOPE	---
△	CURB INLET	▲	---	MTS/SHAW	---	---	BUSHLINE	---
○	HYDRO POLE	●	---	CURB RENEWAL	---	---	NORTH GUTTER	---
⊙	LIGHT STANDARD	⊙	---	PROPERTY LINE	---	---	CENTER LINE	---
⊕	TRAFFIC SIGNAL POLE	⊕	---	RAMP CURB	---	---	SOUTH GUTTER	---
⊕	SURVEY BAR	⊕	---	ELEVATIONS	(31.000)	---	NORTH DITCH	---
⊕	GEODETIC BENCH MARK	⊕	---	TREE	---	---	SOUTH DITCH	---

LOCATION APPROVED		B.M. ELEV.
---	UNDERGROUND STRUCTURES	
---	DATE	

NO.	REVISIONS	DATE	BY
1	SUBMIT FOR PLAN APPROVAL	03/11/20	C.H.

ENGINEERING DIVISION TECHNOLOGY SERVICES BRANCH 106 - 1155 PACIFIC AVE	
DESIGNED BY M.S.	CHECKED BY M.S.
DRAWN BY T.G.	APPROVED BY
HOR. SCALE: 1 : 250 VERTICAL: 1 : 10 DATE: 2020/04/08	



**THE CITY OF WINNIPEG**  
PUBLIC WORKS DEPARTMENT

**ST VITAL PARK ROAD**  
FROM RIVER DRIVE TO LAKE ROAD  
ASPHALT RENEWAL AND ASSOCIATED WORKS  
FROM STA. 7+00 TO STA. 8+20

CITY DRAWING NUMBER SE-20-107  
SHEET 9 OF 21  
6