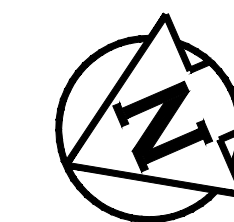


ST VITAL PARK ROAD - MILL & FILL AND ASPHALT DITCH REMOVAL CROSS SECTION (STA: 7+35 - 11+43)
N.T.S.



CONSTRUCTION NOTES

1. REMOVE EXISTING PAVEMENT AND CONSTRUCT NEW 100mm ASPHALT PAVEMENT AS PER DETAILED CROSS SECTION
2. MILL EXISTING ASPHALT AND OVERLAY WITH 80mm ASPHALT PAVEMENT AS PER DETAILED CROSS SECTION
3. REMOVE AND REPLACE EXISTING ASPHALT
4. CONSTRUCT NEW 100mm CONCRETE SIDEWALK
5. REMOVE EXISTING SIDEWALK
6. WIDEN EXISTING APPROACH TO 7.5m & CONSTRUCT NEW 200mm MONOLITHIC CONCRETE CURB
7. REMOVE PARK GATE
8. REMOVE POST BOLLARD
9. INSTALL NEW CULVERT
10. INSTALL CURB RAMP (10mm HT. MONOLITHIC) & DETECTABLE WARNING TILES
11. REMOVE & REPLACE CULVERT
12. REMOVE EXISTING ASPHALT DITCH
13. REMOVE EXISTING ASPHALT DITCH & CONSTRUCT NEW PROPOSED DITCH
14. RE-GRADE EXISTING DITCH

GENERAL NOTES

- A. PAVEMENT DIMENSIONS ARE TO BACK OF CURB / EDGE OF PAVEMENT
- B. ALL CURB RADII UNDER 15.0m SHALL BE MODIFIED
- C. CURB REPLACEMENT AS DIRECTED BY CONTRACT ADMINISTRATOR

PRELIMINARY

NOT TO BE USED FOR CONSTRUCTION

METRIC

WHOLE NUMBERS INDICATE MILLIMETERS
DECIMALIZED NUMBERS INDICATE METERS

BID OPPORTUNITY NO. 129-2020

| | | | | | | | | |
|----------|---------------------|----------|----------|--------------------|----------|----------|----------------------|----------|
| ⊕ | HYDRANT | ◆ | --- | LDS/WWS | --- | --- | CONCRETE | --- |
| ⊗ | VALVE | ● | --- | WATERMAIN | --- | --- | CONCRETE SIDEWALK | --- |
| ⊙ | CURB STOP | ● | --- | GAS | --- | --- | ASPHALT | --- |
| ○ | MANHOLE | ● | --- | TRAFFIC SIGNALS | --- | --- | GRAVEL | --- |
| □ | CATCH BASIN | ■ | --- | HYDRO/STREET LIGHT | --- | --- | DITCH - TOP OF SLOPE | --- |
| △ | CURB INLET | ▲ | --- | MTS/SHAW | --- | --- | BUSHLINE | --- |
| ○ | HYDRO POLE | ● | --- | CURB RENEWAL | --- | --- | NORTH GUTTER | --- |
| ○ | LIGHT STANDARD | ● | --- | PROPERTY LINE | --- | --- | CENTER LINE | --- |
| ○ | TRAFFIC SIGNAL POLE | ● | --- | RAMP CURB | --- | --- | SOUTH GUTTER | --- |
| + | SURVEY BAR | + | --- | ELEVATIONS | (31.000) | --- | NORTH DITCH | --- |
| ⊕ | GEODETIC BENCH MARK | ⊕ | --- | TREE | --- | --- | SOUTH DITCH | --- |
| EXISTING | LEGEND - PLAN | PROPOSED | EXISTING | LEGEND - PLAN | PROPOSED | EXISTING | LEGEND - PROFILE | PROPOSED |

LOCATION APPROVED UNDERGROUND STRUCTURES

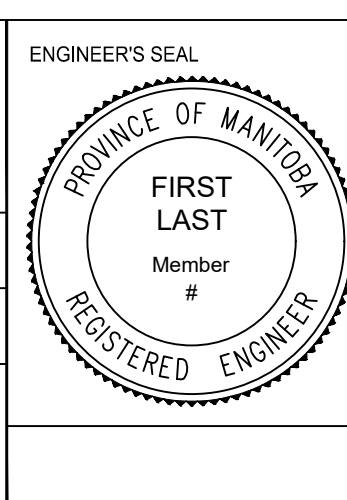
DATE
SUPR. LIG. STRUCTURES COMMITTEE
NOTE:
LOCATION OF UNDERGROUND STRUCTURES AS SHOWN ARE BASED ON THE BEST INFORMATION AVAILABLE. BUT NO GUARANTEE IS GIVEN THAT ALL EXISTING UTILITIES ARE SHOWN OR THAT THE GIVEN LOCATIONS ARE EXACT. CONFIRMATION OF EXISTENCE AND EXACT LOCATION OF ALL SERVICES MUST BE OBTAINED FROM THE INDIVIDUAL UTILITIES BEFORE PROCEEDING WITH CONSTRUCTION.

| | | | |
|------------|--------------------------|----------|------|
| B.M. ELEV. | | | |
| NO. | REVISIONS | DATE | BY |
| 1 | SUBMIT FOR PLAN APPROVAL | 03/11/20 | C.H. |

ENGINEERING DIVISION
TECHNOLOGY SERVICES BRANCH
106 - 1155 PACIFIC AVE

DESIGNED BY M.S. CHECKED BY M.S.
DRAWN BY T.G. APPROVED BY

HOR. SCALE: 1 : 250
VERTICAL: 1 : 10
DATE: 2020/04/08



THE CITY OF WINNIPEG
PUBLIC WORKS DEPARTMENT

ST VITAL PARK ROAD
FROM RIVER DRIVE TO LAKE ROAD
ASPHALT RENEWAL AND ASSOCIATED WORKS
FROM STA. 8+20 TO STA. 9+40

CITY DRAWING NUMBER SE-20-108
SHEET 10 OF 21
7