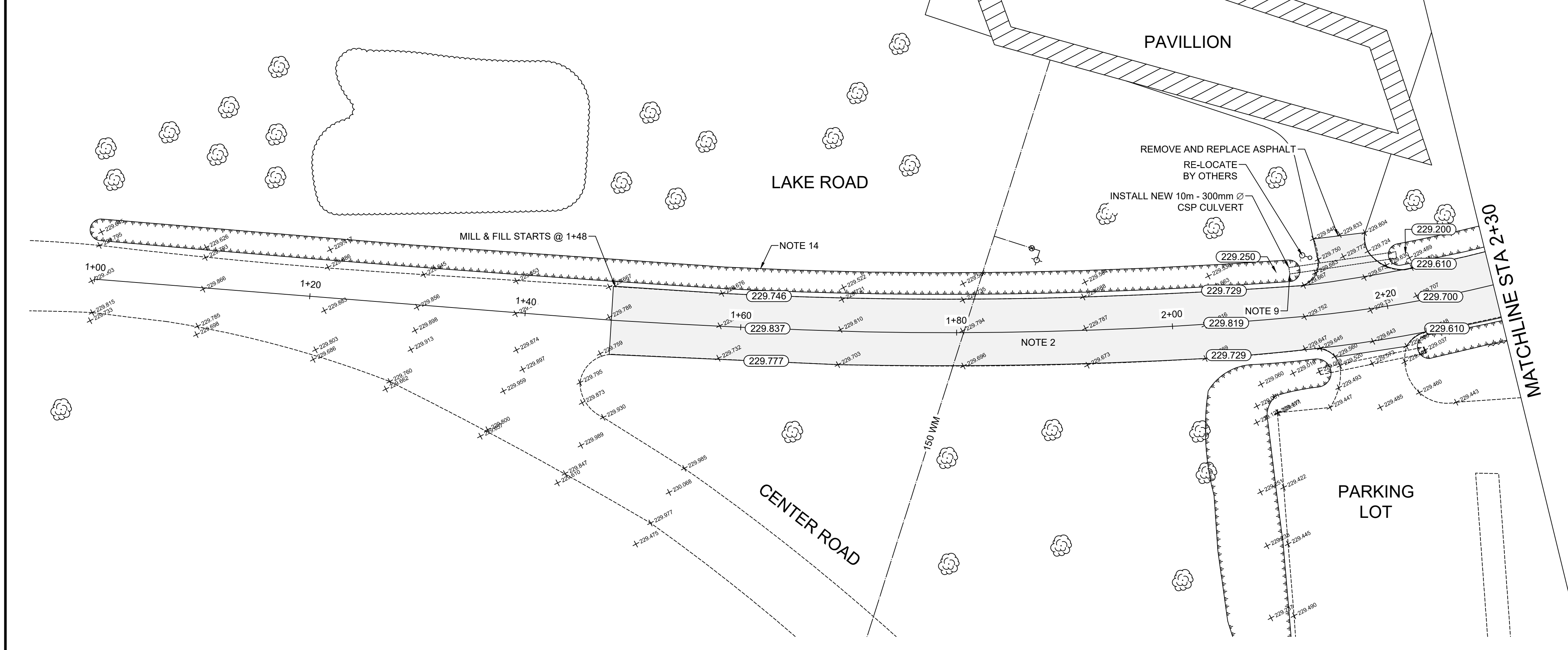


ST VITAL PARK ROAD - MILL & FILL CROSS SECTION  
N.T.S.



- CONSTRUCTION NOTES**
1. REMOVE EXISTING PAVEMENT AND CONSTRUCT NEW 100mm ASPHALT PAVEMENT AS PER DETAILED CROSS SECTION
  2. MILL EXISTING ASPHALT AND OVERLAY WITH 80mm ASPHALT PAVEMENT AS PER DETAILED CROSS SECTION
  3. REMOVE AND REPLACE EXISTING ASPHALT
  4. CONSTRUCT NEW 100mm CONCRETE SIDEWALK
  5. REMOVE EXISTING SIDEWALK
  6. WIDEN EXISTING APPROACH TO 7.5m & CONSTRUCT NEW 200mm MONOLITHIC CONCRETE CURB
  7. REMOVE PARK GATE
  8. REMOVE POST BOLLARD
  9. INSTALL NEW CULVERT
  10. INSTALL CURB RAMP (10mm HT. MONOLITHIC) & DETECTABLE WARNING TILES
  11. REMOVE & REPLACE CULVERT
  12. REMOVE EXISTING ASPHALT DITCH
  13. REMOVE EXISTING ASPHALT DITCH & CONSTRUCT NEW PROPOSED DITCH
  14. RE-GRADE EXISTING DITCH

- GENERAL NOTES**
- A. PAVEMENT DIMENSIONS ARE TO BACK OF CURB / EDGE OF PAVEMENT
  - B. ALL CURB RADII UNDER 15.0m SHALL BE MODIFIED
  - C. CURB REPLACEMENT AS DIRECTED BY CONTRACT ADMINISTRATOR

**PRELIMINARY**  
NOT TO BE USED FOR CONSTRUCTION

**METRIC**  
WHOLE NUMBERS INDICATE MILLIMETERS  
DECIMALIZED NUMBERS INDICATE METERS  
BID OPPORTUNITY NO. 129-2020

EXISTING	LEGEND - PLAN	PROPOSED	EXISTING	LEGEND - PLAN	PROPOSED	EXISTING	LEGEND - PROFILE	PROPOSED
⊕	HYDRANT	◆	---	LDS/WWS	---	▨	CONCRETE	▨
⊗	VALVE	●	---	WATERMAIN	---	▨	CONCRETE SIDEWALK	▨
⊙	CURB STOP	●	---	GAS	---	▨	ASPHALT	▨
○	MANHOLE	●	---	TRAFFIC SIGNALS	---	▨	GRAVEL	▨
□	CATCH BASIN	■	---	HYDRO/STREET LIGHT	---	▨	DITCH - TOP OF SLOPE	▨
△	CURB INLET	▲	---	MTS/SHAW	---	▨	BUSHLINE	▨
○	HYDRO POLE	●	---	CURB RENEWAL	---	▨	NORTH GUTTER	▨
○	LIGHT STANDARD	●	---	PROPERTY LINE	---	▨	CENTER LINE	▨
○	TRAFFIC SIGNAL POLE	●	---	RAMP CURB	---	▨	SOUTH GUTTER	▨
⊕	SURVEY BAR	◆	---	ELEVATIONS	(31.000)	▨	NORTH DITCH	▨
⊕	GEODETIC BENCH MARK	◆	---	TREE	---	▨	SOUTH DITCH	▨

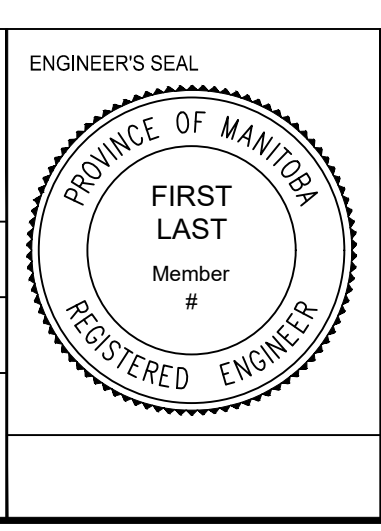
**LOCATION APPROVED UNDERGROUND STRUCTURES**

DATE: \_\_\_\_\_

**NOTE:**  
LOCATION OF UNDERGROUND STRUCTURES AS SHOWN ARE BASED ON THE BEST INFORMATION AVAILABLE. BUT NO GUARANTEE IS GIVEN THAT ALL EXISTING UTILITIES ARE SHOWN OR THAT THE GIVEN LOCATIONS ARE EXACT. CONFIRMATION OF EXISTENCE AND EXACT LOCATION OF ALL SERVICES MUST BE OBTAINED FROM THE INDIVIDUAL UTILITIES BEFORE PROCEEDING WITH CONSTRUCTION.

**ENGINEERING DIVISION  
TECHNOLOGY SERVICES BRANCH  
106 - 1155 PACIFIC AVE**

DESIGNED BY: M.S.	CHECKED BY: M.S.
DRAWN BY: T.G.	APPROVED BY:
HOR. SCALE: 1 : 250	DATE: 2020/04/20
VERTICAL: 1 : 10	



**THE CITY OF WINNIPEG  
PUBLIC WORKS DEPARTMENT**

**LAKE ROAD**  
FROM CENTER ROAD TO ST VITAL PARK ROAD  
ASPHALT RENEWAL AND ASSOCIATED WORKS  
FROM STA. 1+48 TO STA. 2+30

CITY DRAWING NUMBER SE-20-115  
SHEET 17 OF 21  
1