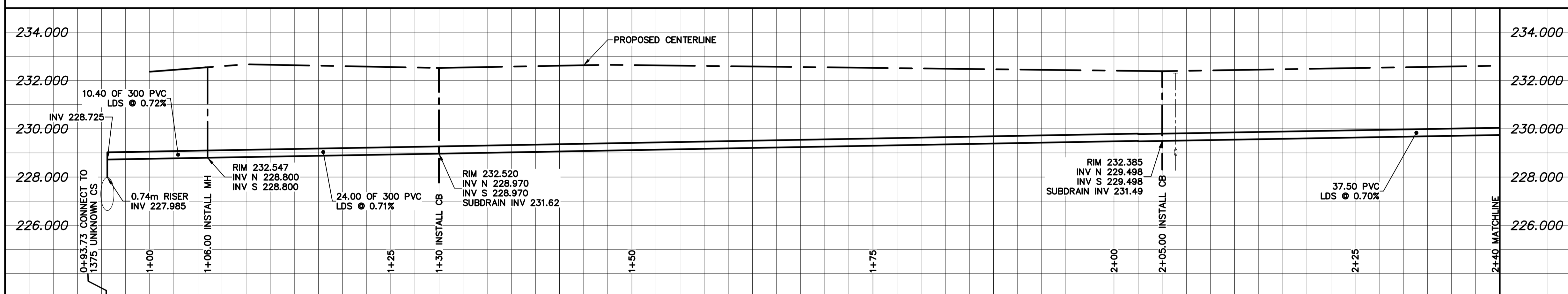
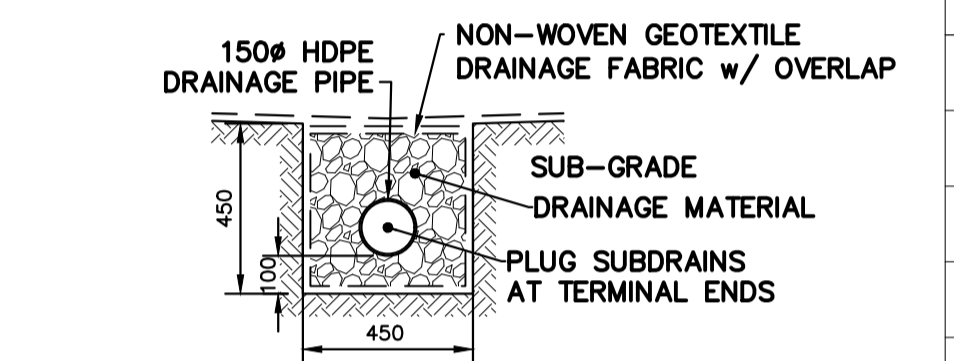


ALLEY PAVEMENT PROFILE
SCALE: 1:250 HOR
1:10 VER

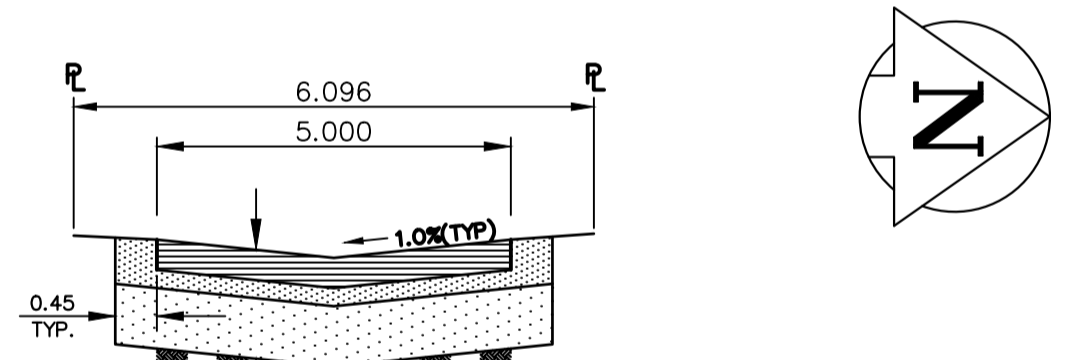
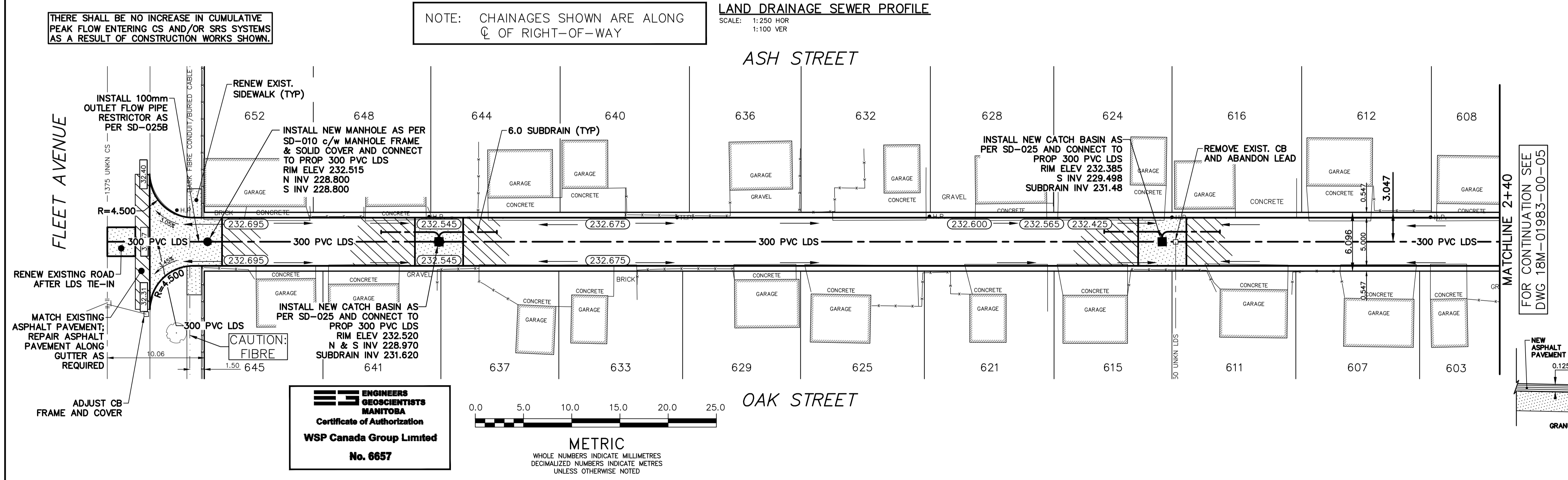
- NOTES:**
1. ALL WORK AND MATERIALS TO BE IN ACCORDANCE WITH THE LATEST REVISION OF THE CITY OF WINNIPEG STANDARD CONSTRUCTION SPECIFICATION.
 2. CONTRACTOR TO CONFIRM THE LOCATION OF ALL UTILITIES/SERVICES IN THE FIELD PRIOR TO CONSTRUCTION.
 3. CONTRACTOR TO AVOID DAMAGE TO EXISTING TREES WITHIN THE LIMITS OF THE ALLEY RIGHT OF WAY AS OUTLINED IN THE BID OPPORTUNITY.
 4. HYDRO POLES AND ANCHORS REQUIRING TEMPORARY SUPPORT TO BE DONE AT THE EXPENSE OF THE CONTRACTOR AS REQUIRED.
 5. WHERE UNSTABLE SUB-GRADES ARE ENCOUNTERED, ADDITIONAL EXCAVATION/SUB-BASE TO BE DETERMINED BY THE CONTRACT ADMINISTRATOR AND CONSTRUCTED IN ACCORDANCE W/ CW-3110.
 6. PROPOSED ELEVATIONS GIVEN ARE FOR EDGE OF PAVEMENT.
 7. ISOLATE EXISTING HYDRO POLES AS PER SD-228C.
 8. RENEW CURBS AND SIDEWALK AS DIRECTED BY THE CONTRACT ADMINISTRATOR.
 9. MODIFIED BARRIER CURBS TO BE CONSTRUCTED AT ALL BACK LANE RADII.
 10. ALL EXISTING PRIVATE APPROACHES TO BE RENEWED AS DIRECTED BY THE CONTRACT ADMINISTRATOR.
 11. ADJUSTMENTS TO PROPOSED CROSSFALL, WHERE REQUIRED, ARE TO BE DETERMINED BY THE CONTRACT ADMINISTRATOR TO SUIT EXISTING DRIVEWAYS, APPROACHES, ETC.
 12. ALL BOULEVARD RESTORATION TO BE SODDED UNLESS OTHERWISE NOTED.
 13. INSTALLATION OF LIP CURBS AND THEIR LIMITS THROUGH PRIVATE APPROACHES TO BE DETERMINED BY THE CONTRACT ADMINISTRATOR.
 14. REMOVE, ADJUST, AND SUPPLY PRECAST SIDEWALK BLOCKS AS DIRECTED BY THE CONTRACT ADMINISTRATOR.



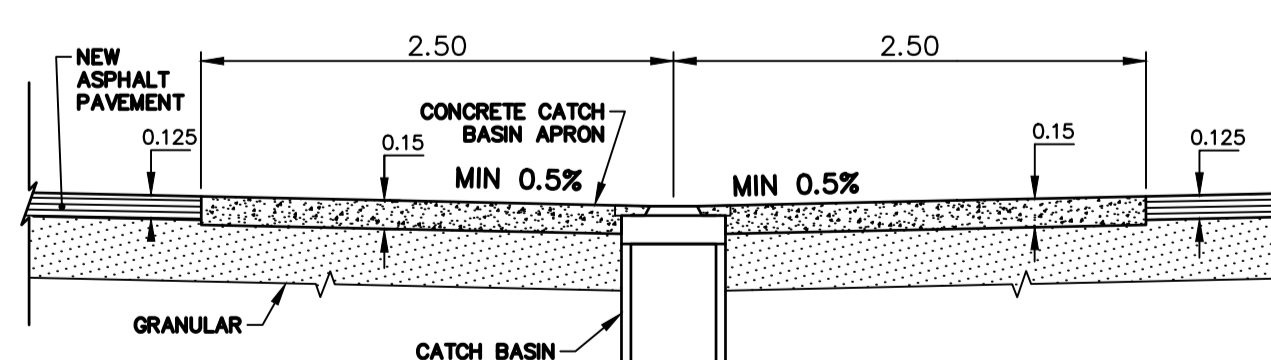
LAND DRAINAGE SEWER PROFILE
SCALE: 1:250 HOR
1:100 VER



TYPICAL ALLEY SUBDRAIN DETAIL
SCALE: N.T.S.



TYPICAL ALLEY CROSS SECTION
SCALE: N.T.S.



TYPICAL CATCHBASIN APRON DETAIL
SCALE: N.T.S.

WATERMAIN	CONCRETE/ASPHALT	150 MM	WATERMAIN	150 MM
HYDRANT	SIDEWALK	300 Lds	VALVE	300 Lds
VALVE	CURB RAMP	250 WWS	LAND DRAINAGE SEWER	300 Lds
CURB STOP	ELEVATIONS	(232.00)	WASTE WATER SEWER	250 WWS
LAND DRAINAGE SEWER	PROPERTY LINE	(232.000)	CENTERLINE	
WASTE WATER SEWER	SURVEY BAR		SOUTH & EAST GUTTER	
CB LEAD	HYDRO POLE		NORTH & WEST GUTTER	
MANHOLE	STREET LIGHT		S & E GARAGE PAD	
CATCH BASIN	JOINTS		N & W GARAGE PAD	
GAS	ASPHALT REPAIR			
HYDRO				
EXISTING	LEGEND - PLAN	PROPOSED	EXISTING	LEGEND - PROFILE
				PROPOSED

LOCATION APPROVED UNDERGROUND STRUCTURES

SUPV. U/G STRUCTURES	DATE
NOTE:	
LOCATION OF UNDERGROUND STRUCTURES AS SHOWN ARE BASED ON THE BEST INFORMATION AVAILABLE BUT NO GUARANTEE IS GIVEN THAT ALL EXISTING UTILITIES ARE SHOWN OR THAT THE GIVEN LOCATIONS ARE EXACT. CONFIRMATION OF EXISTENCE AND EXACT LOCATION OF ALL SERVICES MUST BE OBTAINED FROM THE INDIVIDUAL UTILITIES BEFORE PROCEEDING WITH CONSTRUCTION.	

B.M. - TOP NUT OF HYDRANT AT THE NORTH EAST CORNER OF OAK ST./FLEET AVE. INTERSECTION ELEV. - 233.565

3	ISSUED FOR TENDER	21/01/20	DR
2	ISSUED FOR PW & UGS REVIEW	16/04/19	AB
1	PRELIMINARY DESIGN REVIEW	14/03/19	DR
NO	REVISIONS		

wsp

111-83 Lombard Avenue
Winnipeg, Manitoba
R3B 3B1 Canada
Phone: 204-943-3178
Fax: 204-943-4948
wsp.com

DESIGNED BY	A.B.	CHECKED BY	A.B./R.H.
DRAWN BY	D.R.	APPROVED BY	S.M.
HOR. SCALE:	1:250	RELEASED FOR CONSTRUCTION	
VERT. SCALE:	AS SHOWN		

NOT FOR CONSTRUCTION

CONSULTANT DRAWING NO.
18M-01983-00-04

THE CITY OF WINNIPEG
PUBLIC WORKS DEPARTMENT

2019 ALLEY RENEWALS
ASH STREET / OAK STREET ALLEY
FROM FLEET AVENUE TO STA 2+40

ASPHALT PAVEMENT

CITY DRAWING NO.
LD-----

SHEET 1 OF 3

BID OPPORTUNITY
162-2020