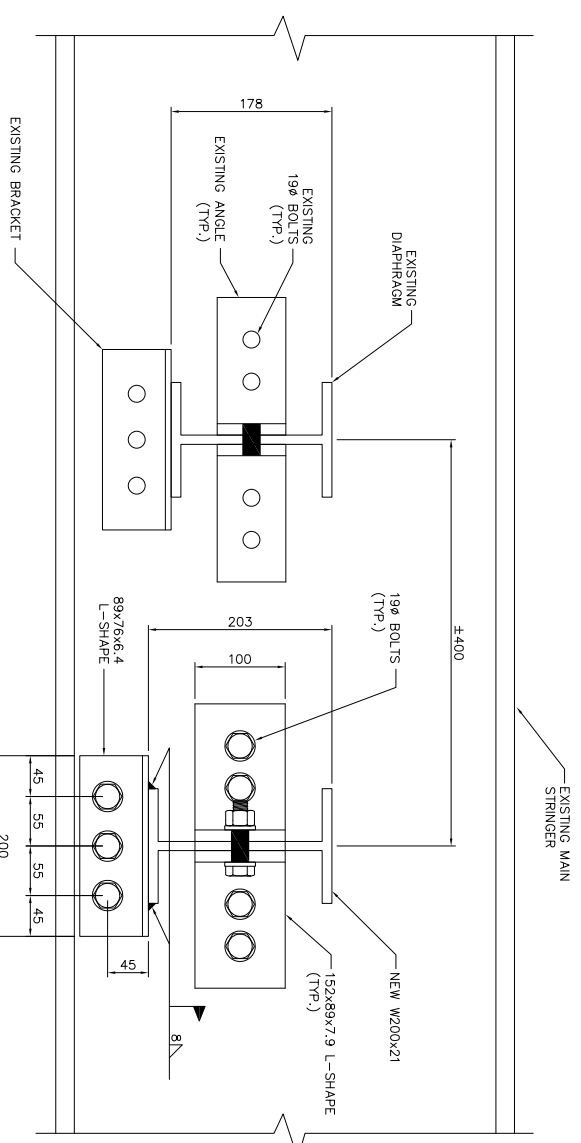


1 SECTION @ APPROACH SPAN - SHOWING DIAPHRAGM  
3/10 SCALE N.T.S.



EXISTING CONDITION OF A DIAPHRAGM AT SPAN 30



EXISTING DIAPHRAGM

NEW DIAPHRAGM

2 SECTION  
10/10 SCALE N.T.S.

TYPE 4 REPAIR

- NOTES:
- 1 DO NOT SCALE DRAWINGS. TAKE FIELD MEASUREMENTS AS IS NECESSARY. REPORT ALL DISCREPANCIES TO THE ENGINEER IMMEDIATELY.
  - 2 THE DRAWINGS SHOW THE COMPLETED STRUCTURE AND DO NOT SHOW ALL THE TEMPORARY MEASURES REQUIRED DURING THE REPAIRS.
  - 3 REPORT ANY UNSOUND CONDITIONS TO THE ENGINEER IMMEDIATELY.
  - 4 NEW DIAPHRAGM LOCATION SHALL BE APPROVED BY CONTRACT ADMINISTRATOR.

THE DETAILS AND DIMENSIONS SHOWN ON THE DRAWINGS HAVE BEEN OBTAINED FROM ORIGINAL DESIGN DRAWINGS. CONTRACTOR TO VERIFY ALL DETAILS AND DIMENSIONS AND REPORT ANY DISCREPANCIES TO THE CONTRACT ADMINISTRATOR PRIOR TO COMMENCING WORK.

NOTE:

B.M.  
ELEV.

DESIGNED BY: M.M.  
DRAWN BY: J.G.W.  
CHECKED BY: D.A.B.  
APPROVED BY: D.A.B.  
AUTHORIZED BY:

ENGINEER'S SEAL

**CITY OF WINNIPEG**  
PUBLIC WORKS DEPARTMENT  
ENGINEERING DIVISION

ARLINGTON OVERPASS (OPR YARDS)  
2020 STRUCTURAL STEEL REPAIRS

SHEET 10 OF 12  
HORIZONTAL: N.T.S.  
VERTICAL: N.T.S.

STRUCTURAL STEEL AND  
MISCELLANEOUS DETAILS (4 OF 6)  
CITY DRAWING NUMBER:  
B106-20-10

**METRIC**

UNITS NUMBERS INDICATE METRIC UNITS  
DIMENSIONAL NUMBERS INDICATE METERS

0

REVISION

ISSUED FOR TENDER

DATE

BY

J.W.

M. MADY

BRIDGE MAINTENANCE ENGINEER

27/04/20

ORIGINAL SIGNED BY M. MADY

BID OPPORTUNITY NO.:

163-2020