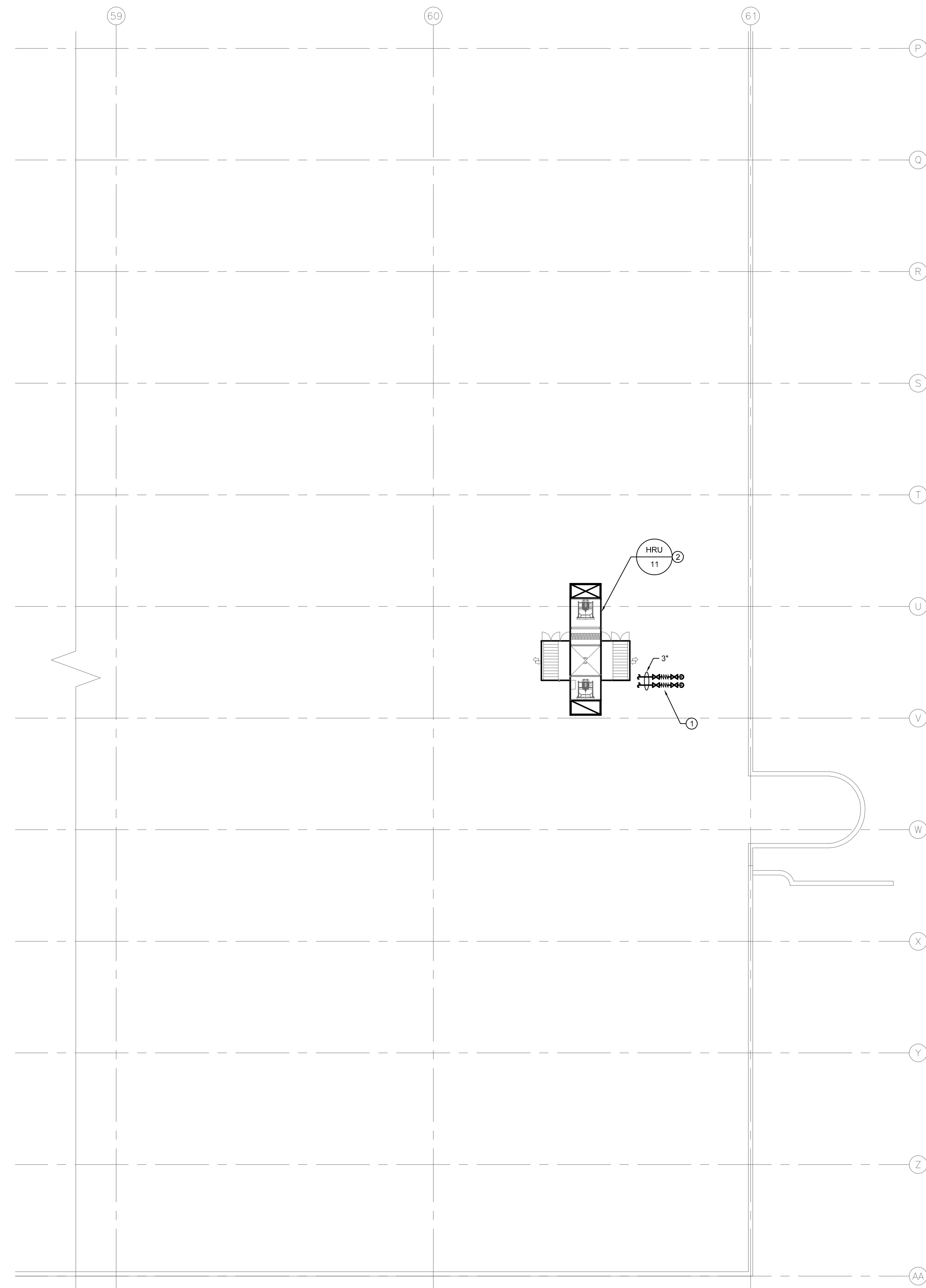
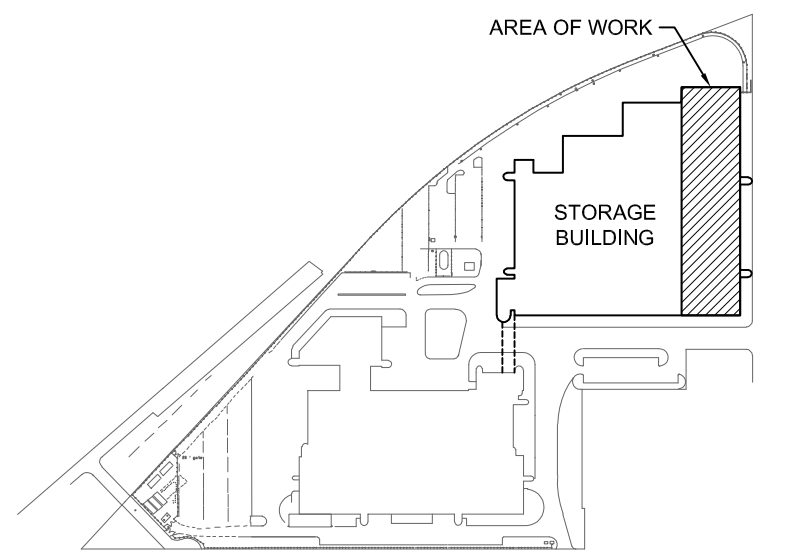


1 ROOF PLAN - TRACK 25-36 - HYDRONICS - NEW CONSTRUCTION (GRID LINES A-P)
 M5.2 SCALE: 1/16" = 1'-0"



2 ROOF PLAN - TRACK 25-36 - HYDRONICS - NEW CONSTRUCTION (GRID LINES P-AA)
 M5.2 SCALE: 1/16" = 1'-0"



KEY PLAN
 NTS

GENERAL NOTES

- A. THIS BUILDING MAY CONTAIN ASBESTOS. REFER TO FRONT END SPECIFICATIONS FOR FURTHER INFORMATION.
- B. REFER TO ROOF DETAILS AND SPECIFICATIONS FOR ALL NEW AND CAPPED OPENINGS.

KEY NOTES (M)

- 1. CONNECT GHS AND GHR TO THE CITY SUPPLIED HRU ON ROOF. NEW FLEX CONNECTORS TO ACCOMMODATE UP TO 2" OF LATERAL MOVEMENT OF STEEL STAND.
- 2. THE CITY SUPPLIED HRU. REFER TO M4.2 FOR FURTHER INFORMATION.

NO.	Description	BY	DATE
0	ISSUED FOR CONSTRUCTION	JH	16/01/20

**ENGINEERS
 GEOSCIENTISTS
 MANITOBA**
 Certificate of Authorization
SMS Engineering Ltd.
 No. 166



770 Bradford Street
 Winnipeg, Canada
 T 204 775 0291
 SMSeng.com
**SMS
 ENGINEERING**

Project Title
**CITY OF WINNIPEG FORT ROUGE
 TRANSIT BASE - STORAGE
 TRACK 25-36 - MECHANICAL
 UPGRADE**
 WINNIPEG MANITOBA

Drawing Title
**ROOF PLAN -
 TRACK 25-36 -
 HYDRONICS -
 NEW CONSTRUCTION**

Drawn By IE	Checked By XZ	Approved By JH
Scale AS NOTED	Date JANUARY, 2020	Project No. 19-332-02
Revision Number 0	Drawing Number M5.2	Sheet Order 13 OF 14

FILE NAME AND PATH: C:\PROJECTS\2019\19-332-FortRouge-Track25-36-MechanicalUpgrade\03-Civil_Plan\03-Mech\02-Construction\19332_M5.2_P1_A1.dwg
 LAYOUT: M5.2
 LAST SAVED BY: zsh
 DATE PLOTTED: Monday, October 7, 2019 12:52:07 PM