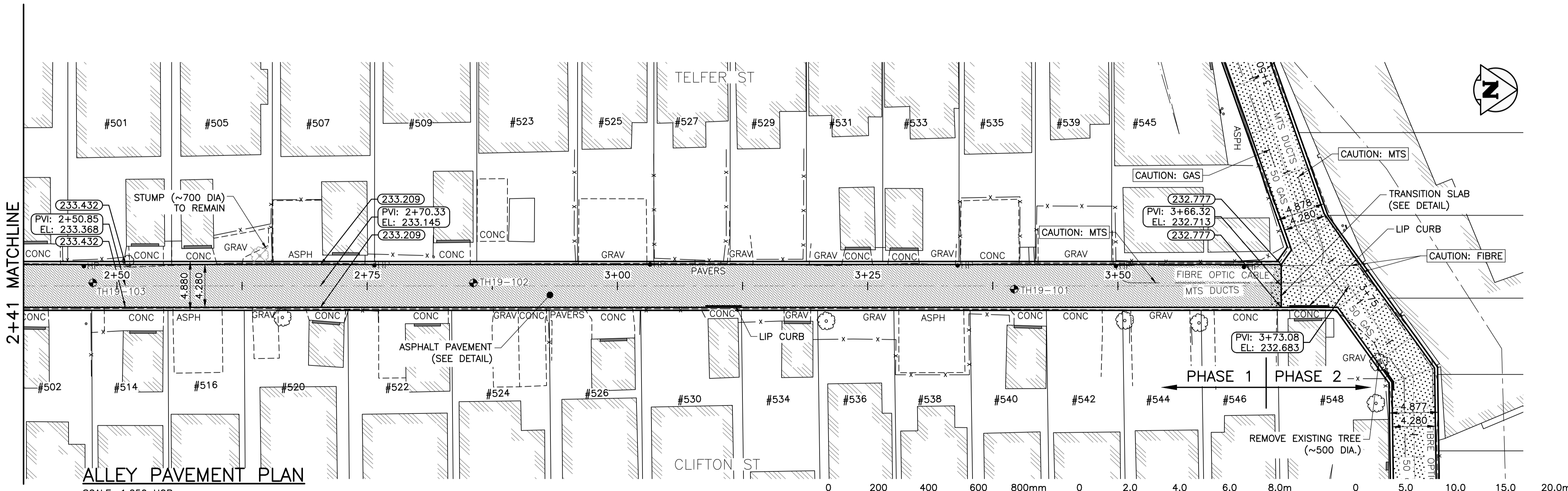


- NOTES**
- STATION CHAINAGE IS BASED ON CENTERLINE OF ALLEY RIGHT OF WAY.
 - ALLEY TO BE CONSTRUCTED IN PHASES AS SHOWN.
 - REGRADE EXISTING PRIVATE SIDEWALKS, APPROACHES & REAR OR SIDEYARDS AS DIRECTED.
 - INSTALLATION OF LIP CURBS AND THEIR EXTENTS TO BE DETERMINED BY THE CONTRACT ADMINISTRATOR ON SITE.
 - CONCRETE APPROACH RENEWALS TO BE REINFORCED IN ACCORDANCE WITH CW-3230, CW-3310, & SD-237.
 - INSTALL MODIFIED BARRIER CURB AT ALL ALLEY APPROACH RADII (SD-203B).
 - ALL EXISTING TREES TO BE PROTECTED THROUGHOUT CONSTRUCTION UNLESS OTHERWISE NOTED.
 - CONTACT THE CITY OF WINNIPEG GEOMATICS BRANCH IN ADVANCE OF CONSTRUCTION TO COORDINATE MONUMENT PROTECTION SERVICES (204)-918-1360.
 - CONFIRM THE LOCATION OF ALL UTILITIES PRIOR TO COMMENCING CONSTRUCTION.
 - LIGHT STANDARDS AND HYDRO POLES MAY REQUIRE TEMPORARY SUPPORT DURING CONSTRUCTION AT THE CONTRACTOR'S EXPENSE.
 - ISOLATE ALL POLES, BASES AND PILES WITHIN ALLEY RIGHT OF WAY (SD-228C).
 - NO VIBRATORY COMPACTION PERMITTED WITHIN 1.0M OF GAS MAINS OR DUCT BANKS.
 - NO WORKS, INCLUDING CONCRETE CUTTING OR BREAKING, TO BE UNDERTAKEN NEAR GAS LINES OR DUCT BANKS UNLESS DEPTH OF COVER IS DETERMINED AND A MANITOBA HYDRO SAFETY WATCH REPRESENTATIVE IS ON SITE.
 - PROVIDE SEWER INSPECTION FOR ALL NEW SEWER PIPE INSTALLATION, POINT REPAIRS & ABANDONMENTS.



PROPERTY LIMITS DELINEATION

DELINEATION OF PROPERTY LIMITS AS SHOWN ON THIS DWG DOES NOT REPRESENT A "LEGAL SURVEY". KGS GROUP MAKES NO REPRESENTATION OR WARRANTY AS TO THE ACCURACY OF PROPERTY LIMITS DELINEATED ON THIS DWG, NOR ON THE DIMENSIONAL ACCURACY OF DWG FEATURES RELATIVE TO THOSE PROPERTY LIMITS.

WARNING

- NOTIFY THE GAS COMPANY OF THE PROPOSED LOCATION OF EXCAVATION.
- TAKE PRECAUTION TO AVOID DAMAGE TO GAS COMPANY INSTALLATIONS.
- SEE PROVINCIAL REGULATION 210/72 FOR DETAILS.

METRIC

WHOLE NUMBERS INDICATE MILLIMETRES
DECIMALIZED NUMBERS INDICATE METRES

ENGINEERS GEOSCIENTISTS MANITOBA
Certificate of Authorization
KGS Group
No. 245

300_LDS	LAND DRAINAGE SEWER	300_LDS	-x-x-	FENCE			
250_WWS	WASTE WATER SEWER	250_WWS	→	TEST HOLE			
---	GAS	---	→	GUY WIRE			
---	HYDRO	---	→	LIGHT STANDARD			
---	M.T.S.	---	→	BACK OF CURB			
150_WM	WATER MAIN	150_WM	→	CONCRETE	XXXX	Q PROFILE	XXXX
⊕	HYDRANT	⊕	→	ASPHALT	□□□□	EDGE OF ALLEY LHS	□□□□
⊙	VALVE	⊙	→	SIDEWALK	○-○-○	EDGE OF ALLEY RHS	○-○-○
○	MANHOLE	○	→	PROPERTY LINE	◇◇◇◇	N/W LANE P	◇◇◇◇
□	CATCH BASIN	□	→	SURVEY BAR	⊕	S/E MEDIAN P	⊕
▽	CURB INLET	▽	→	GEODETIC BENCHMARK	⊕	GARAGE/PARKING SLAB	⊕
•	POLES	•	→	ELEVATION	(232.231)	WINDOW/DOOR SILL	TTTTT
•	POLES	•	→				
EXISTING	LEGEND-PLAN	PROPOSED		EXISTING	LEGEND-PROFILE	PROPOSED	

LOCATION APPROVED UNDERGROUND STRUCTURES

NO. REVISIONS DATE BY

0 ISSUED FOR TENDER 20/03/18 JB

KGS GROUP

DESIGNED BY: JB CHECKED BY: CR

DRAWN BY: JLF APPROVED BY: CR

HOR. SCALE: 1:250 RELEASED FOR CONSTRUCTION: DATE

VERTICAL: VARIES

CONSULTANT DRAWING NO. **C102**

THE CITY OF WINNIPEG
PUBLIC WORKS DEPARTMENT
ENGINEERING DIVISION

PROJECT TITLE: **2019 ALLEY RENEWALS AND LOCAL IMPROVEMENT ALLEYS**
CLIFTON ST / TELFER ST
WOLSELEY AVE TO PORTAGE AVE
STA 2+41 TO NORTH LEG

SHEET **02** OF **24**

COMPUTER FILE NAME: 18-0107-017_CALL

CITY DRAWING NUMBER: ---

File: B:\Projects\2018\18-0107-017\Drawings\18-0107-017_CALL - Tab: C102 Plotted By: gloewen 20/03/18 [Wed 8:46am]
 A1 (C:\Users\jlf\Documents\18-0107-017_CALL - Tab: C102) SCALE: 1:1