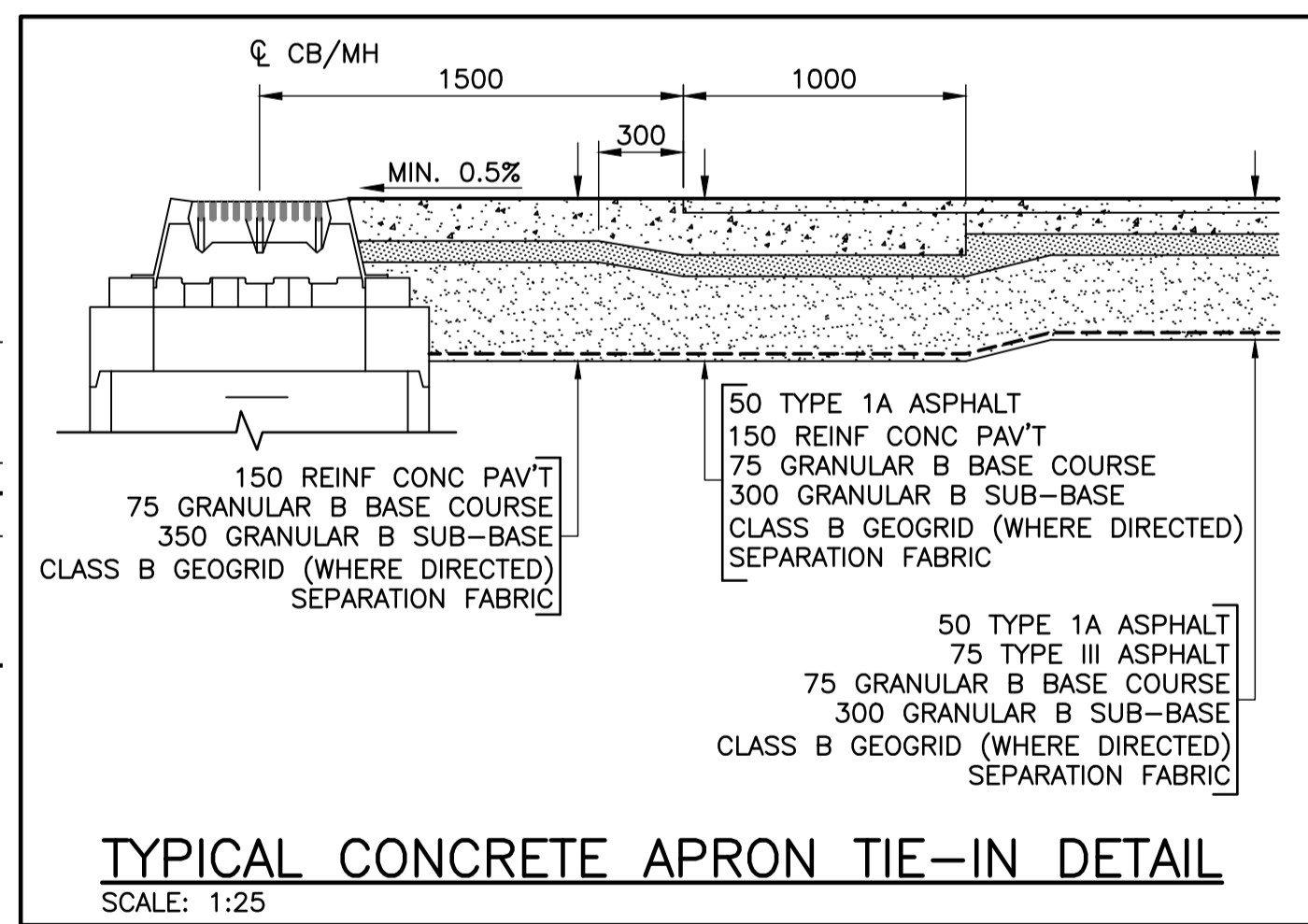
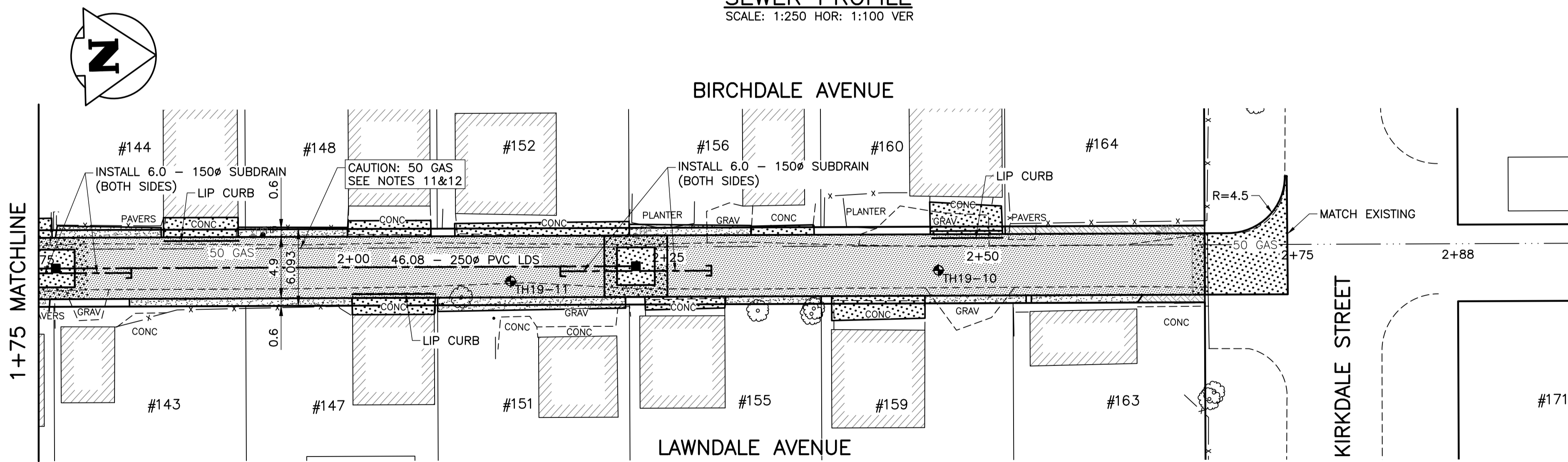
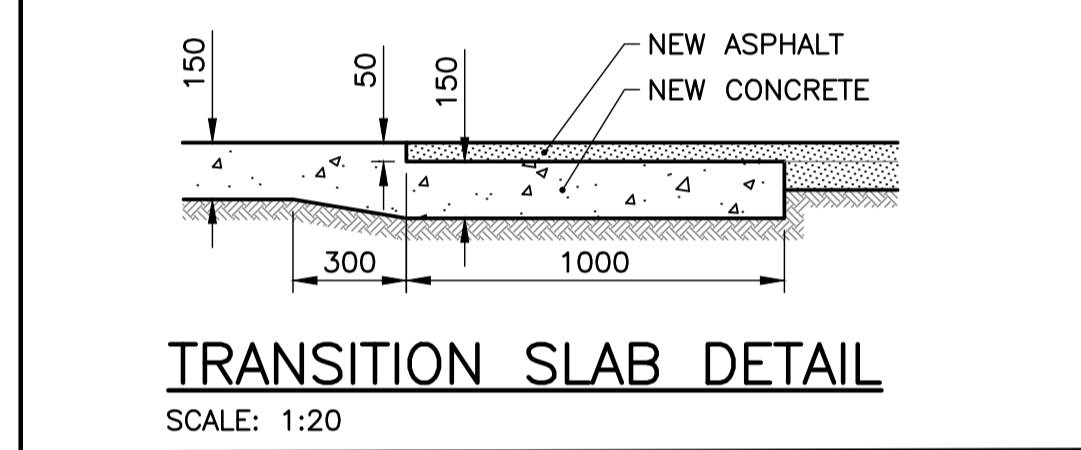
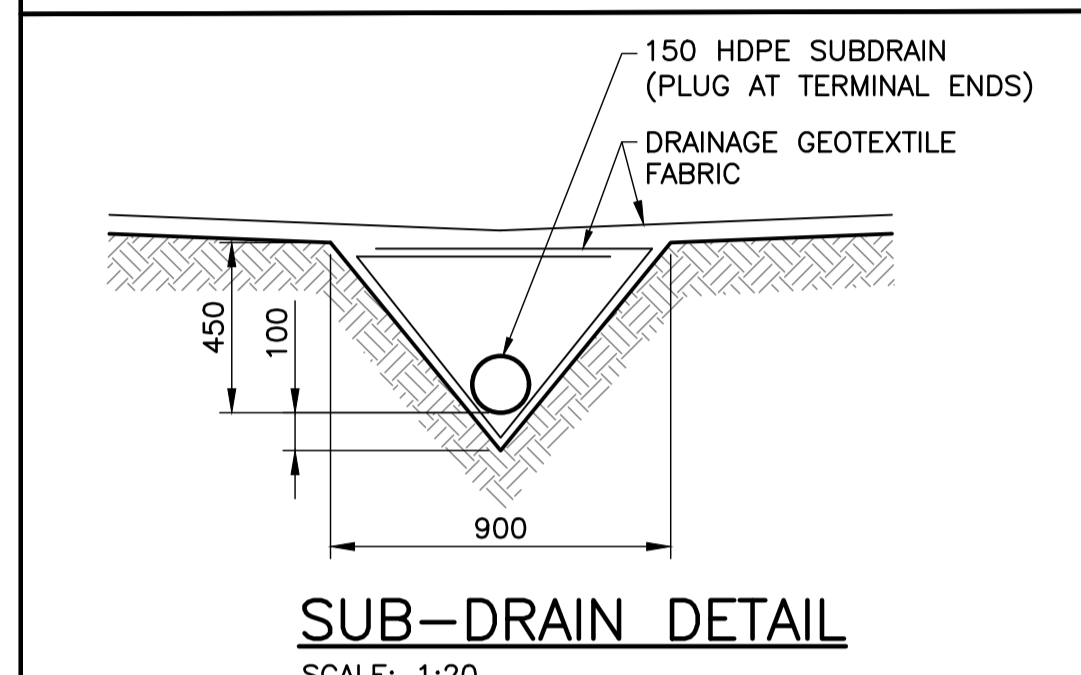
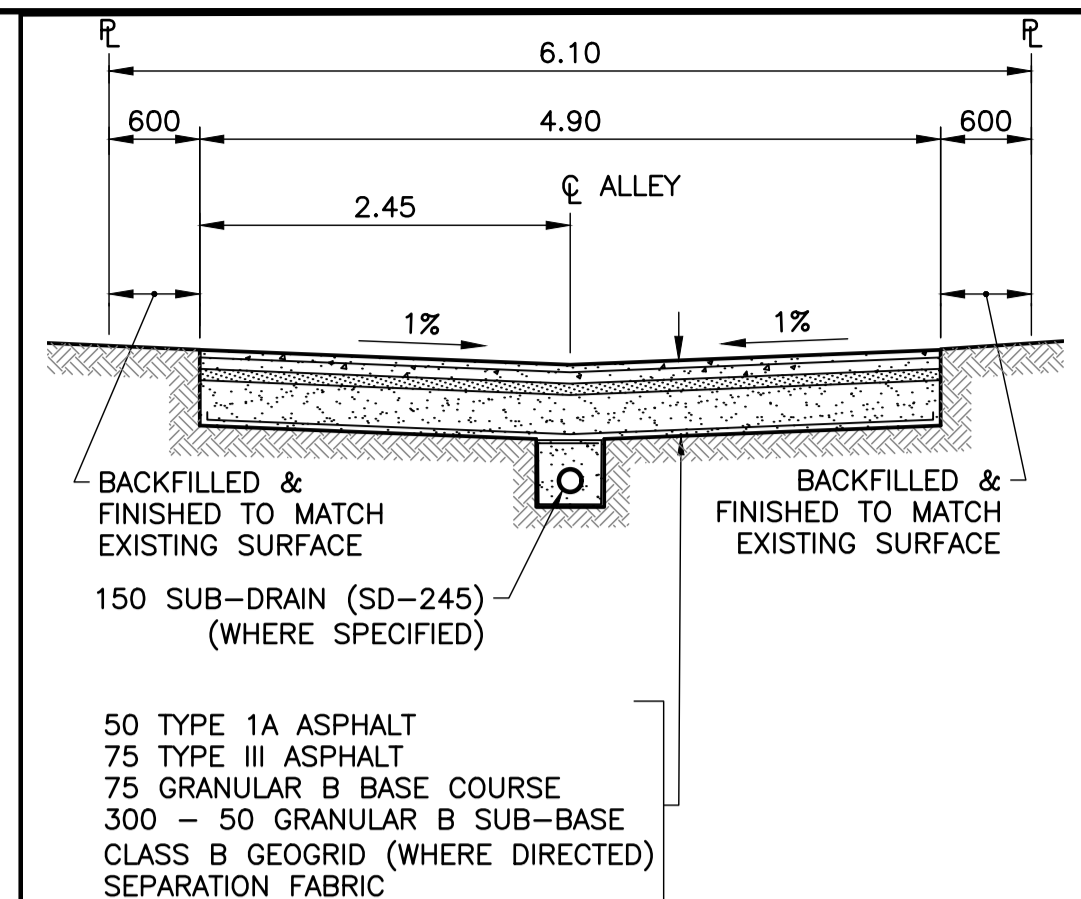


- NOTES**
- STATION CHAINAGE IS BASED ON CENTERLINE OF ALLEY RIGHT OF WAY.
 - REGRADE EXISTING PRIVATE SIDEWALKS, APPROACHES & REAR OR SIDEYARDS AS DIRECTED.
 - INSTALLATION OF LIP CURBS AND THEIR EXTENTS TO BE DETERMINED BY THE CONTRACT ADMINISTRATOR ON SITE.
 - CONCRETE APPROACH RENEWALS TO BE REINFORCED IN ACCORDANCE WITH CW-3230, CW-3310, & SD-237.
 - INSTALL MODIFIED BARRIER CURB AT ALL ALLEY APPROACH RADII (SD-203B).
 - ALL EXISTING TREES TO BE PROTECTED THROUGHOUT CONSTRUCTION UNLESS OTHERWISE NOTED.
 - CONTACT THE CITY OF WINNIPEG GEOMATICS BRANCH IN ADVANCE OF CONSTRUCTION TO COORDINATE MONUMENT PROTECTION SERVICES (204)-918-1360.
 - CONFIRM THE LOCATION OF ALL UTILITIES PRIOR TO COMMENCING CONSTRUCTION.
 - LIGHT STANDARDS AND HYDRO POLES MAY REQUIRE TEMPORARY SUPPORT DURING CONSTRUCTION AT THE CONTRACTOR'S EXPENSE.
 - ISOLATE ALL POLES, BASES AND PILES WITHIN ALLEY RIGHT OF WAY (SD-228C).
 - NO VIBRATORY COMPACTION PERMITTED WITHIN 1.0M OF GAS MAINS OR DUCT BANKS.
 - NO WORKS, INCLUDING CONCRETE CUTTING OR BREAKING, TO BE UNDERTAKEN NEAR GAS LINES OR DUCT BANKS UNTIL DEPTH OF COVER IS DETERMINED AND A MANITOBA HYDRO SAFETY WATCH REPRESENTATIVE IS ON SITE.
 - PROVIDE SEWER INSPECTION FOR ALL NEW SEWER PIPE INSTALLATION, POINT REPAIRS, & ABANDONMENTS.



METRIC
WHOLE NUMBERS INDICATE MILLIMETRES
DECIMALIZED NUMBERS INDICATE METRES

PROPERTY LIMITS DELINEATION
DELINEATION OF PROPERTY LIMITS AS SHOWN ON THIS DWG DOES NOT REPRESENT A "LEGAL SURVEY". KGS GROUP MAKES NO REPRESENTATION OR WARRANTY AS TO THE ACCURACY OF PROPERTY LIMITS DELINEATED ON THIS DWG, NOR ON THE DIMENSIONAL ACCURACY OF DWG FEATURES RELATIVE TO THOSE PROPERTY LIMITS.

WARNING

- NOTIFY THE GAS COMPANY OF THE PROPOSED LOCATION OF EXCAVATION.
- TAKE PRECAUTION TO AVOID DAMAGE TO GAS COMPANY INSTALLATIONS.
- SEE PROVINCIAL REGULATION 210/72 FOR DETAILS.

ENGINEERS GEOSCIENTISTS MANITOBA
Certificate of Authorization
KGS Group
No. 245

THE CITY OF WINNIPEG PUBLIC WORKS DEPARTMENT ENGINEERING DIVISION

PROJECT TITLE: 2019 ALLEY RENEWALS AND LOCAL IMPROVEMENT ALLEYS
BIRCHDALE AVE / LAWNDALE AVE
HIGHFIELD ST TO KIRKDALE ST
STA. 1+75 TO STA. 2+74.94

SHEET 23 OF 24
COMPUTER FILE NAME: 18-0107-016_ALLEYS
CITY DRAWING NUMBER: -

EXISTING	LEGEND-PLAN	PROPOSED	EXISTING	LEGEND-PLAN	PROPOSED	EXISTING	LEGEND-PROFILE	PROPOSED
300 LDS	LAND DRAINAGE SEWER	300 LDS	- - - - -	FENCE	- - - - -	---	---	---
250 WWS	WASTE WATER SEWER	250 WWS	+	TEST HOLE	+	---	---	---
---	GAS	---	+	GUY WIRE	+	---	---	---
---	HYDRO	---	+	LIGHT STANDARD	+	---	---	---
---	M.T.S.	---	+	BACK OF CURB	+	---	---	---
150 WM	WATERMAIN	150 WM	---	CONCRETE	---	---	---	---
+	HYDRANT	+	---	ASPHALT	---	---	---	---
+	VALVE	+	---	SIDEWALK	---	---	---	---
+	MANHOLE	+	---	PROPERTY LINE	---	---	---	---
+	CATCH BASIN	+	---	SURVEY BAR	---	---	---	---
+	CURB INLET	+	---	GEODETIC BENCHMARK	---	---	---	---
+	POLES	+	---	ELEVATION	---	---	---	---
---	LEGEND-PLAN	---	---	LEGEND-PLAN	---	---	---	---

LOCATION APPROVED UNDERGROUND STRUCTURES

LOCATIONS OF UNDERGROUND STRUCTURES AS SHOWN ARE BASED ON THE BEST INFORMATION AVAILABLE BUT NO GUARANTEE IS GIVEN THAT ALL EXISTING UTILITIES ARE SHOWN OR THAT THE GIVEN LOCATIONS ARE EXACT. CONFIRMATION OF EXISTENCE AND EXACT LOCATION OF ALL SERVICES MUST BE OBTAINED FROM THE INDIVIDUAL UTILITIES BEFORE PROCEEDING WITH CONSTRUCTION.

NO.	REVISIONS	DATE	BY
0	ISSUED FOR TENDER	20/03/18	JB

DESIGNED BY	CHECKED BY	DRAWN BY	APPROVED BY	HOR. SCALE	VERTICAL	RELEASED FOR CONSTRUCTION
JB	CR	IT	CR	1:250	VARIABLE	2019-02-15

KGS GROUP

ENGINEER'S SEAL
PROVINCE OF MANITOBA
JASON ROSCOE
REGISTERED PROFESSIONAL ENGINEER
14869
2020-03-18

CONSULTANT DRAWING NO. **C802**

File: B:\Projects\2018\18-0107-016\DWG\Mun\18-0107-016_ALLEYS - Tab.C802 Plotted By: gloewen 20/03/18 [Wed 8:24am] A1 (1:250) / PLOT SCALE: 1:1