

VA:168044\A\168044\0300\_drawing\0302\_sheer\_files\02\_sml\phase\_2-stage\_2&3 (2017)03\09351c-2&3.dwg  
2020/03/26 4:03 PM By: Derek\_Laborde

**WARNING**

IF POWER EQUIPMENT OR EXPLOSIVES ARE TO BE USED FOR EXCAVATION ON THIS PROJECT THE CONTRACTOR MUST:  
1) NOTIFY THE GAS COMPANY OF THE PROPOSED LOCATION OF EXCAVATION.  
2) TAKE PRECAUTION TO AVOID DAMAGE TO GAS COMPANY INSTALLATIONS.  
SEE PROVINCIAL REGULATION 140/92 FOR DETAILS

**METRIC**

WHOLE NUMBERS INDICATE MILLIMETRES  
DECIMALIZED NUMBERS INDICATE METRES

150_WM	WATERMAIN	150_WM	HYDRO	150_WM	PROPOSED
+	HYDRANT	+	M.T.S.	+	PROPOSED
⊙	VALVE	⊙	CONCRETE	⊙	PROPOSED
300_LDS	LAND DRAINAGE SEWER	300_LDS	ASPHALT	---	PROPOSED
250_WWS	WASTE WATER SEWER	250_WWS	SIDEWALK	---	PROPOSED
●	MANHOLE	●	PROPERTY LINE	---	PROPOSED
■	CATCH BASIN	■	SURVEY BAR	+	PROPOSED
▼	CURB INLET	▼	DITCH	---	PROPOSED
+	JUNCTIONS	+	ROAD ELEVATION	(32.23)	PROPOSED
+	CULVERT	+			
+	GAS	+			
---	EXISTING	---	EXISTING	---	EXISTING
---	LEGEND-PLAN	---	LEGEND-PLAN	---	LEGEND-PLAN

**LOCATION APPROVED UNDERGROUND STRUCTURES**

SUPV. U/G STRUCTURES DATE COMMITTEE

**NOTE:**  
LOCATION OF UNDERGROUND STRUCTURES AS SHOWN ARE BASED ON THE BEST INFORMATION AVAILABLE BUT NO GUARANTEE IS GIVEN THAT ALL EXISTING UTILITIES ARE SHOWN OR THAT THE GIVEN LOCATIONS ARE EXACT. CONFIRMATION OF EXISTENCE AND EXACT LOCATION OF ALL SERVICES MUST BE OBTAINED FROM THE INDIVIDUAL UTILITIES BEFORE PROCEEDING WITH CONSTRUCTION.

BENCHMARK: N.W. Cor. of Mazenod Rd. & G.W.W.D. R.O.W.,  
19 mm dia. x 4.6 m I.B. in Valve Box, 3.0 m W. of W.L. of Mazenod Rd. & 4.0 m N. of N. rail of tracks in G.W. W.D. R.O.W.



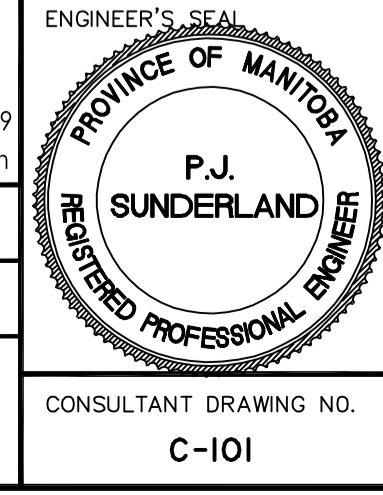
**ENGINEERS GEOSCIENTISTS MANITOBA**  
Certificate of Authorization  
Stantec Consulting Ltd.  
No. 1301

**Stantec**  
500 - 311 Portage Avenue, Winnipeg M8 Canada R3B 2B9  
Tel. 204.489.5900 Fax. 204.453.9012 www.stantec.com

DESIGNED BY: P.J.S. CHECKED BY: J.D.K.  
DRAWN BY: L.D. APPROVED BY: P.J.S.

HOR. SCALE: 1:1500  
VERTICAL: RELEASED FOR CONSTRUCTION: DATE

1 SUBMITTED FOR CITY REVIEW 20.03.27 P.J.S.  
NO. REVISIONS YY.MM.DD. BY DATE 2020 .02 .18



**THE CITY OF WINNIPEG**  
Winnipeg

ST. BONIFACE INDUSTRIAL PARK - PH 2 - STAGE 2&3  
**GENERAL LAYOUT**

SHEET 2 OF 11  
CAD FILE DRAWING NUMBER 09351C-101-PH2-2&3.DWG  
CITY DRAWING NUMBER