

**WARNING**  
 IF POWER EQUIPMENT OR EXPLOSIVES ARE TO BE USED FOR EXCAVATION ON THIS PROJECT THE CONTRACTOR MUST:  
 1) NOTIFY THE GAS COMPANY OF THE PROPOSED LOCATION OF EXCAVATION.  
 2) TAKE PRECAUTION TO AVOID DAMAGE TO GAS COMPANY INSTALLATIONS.  
 SEE PROVINCIAL REGULATION 140/92 FOR DETAILS

- NOTES:**
- CHAINAGES SHOWN ARE ALONG CENTERLINE OF ROAD.
  - SUBDRAINS 18.00m EACH SIDE OF CATCH BASINS (SD-245).
  - ALL PIPE UNDER EXISTING AND FUTURE PAVEMENT ARE INSTALLED BY TRENCHLESS METHODS.
  - ALL LONG ASSEMBLY HYDRANTS (SD-006)  
ALL SHORT ASSEMBLY HYDRANTS (SD-007).
  - ALL EXISTING WATERMAIN HYDRANT TEES ARE IPEX AWWA C900.

**METRIC**  
 WHOLE NUMBERS INDICATE MILLIMETRES  
 DECIMALIZED NUMBERS INDICATE METRES

**LOCATION APPROVED UNDERGROUND STRUCTURES**

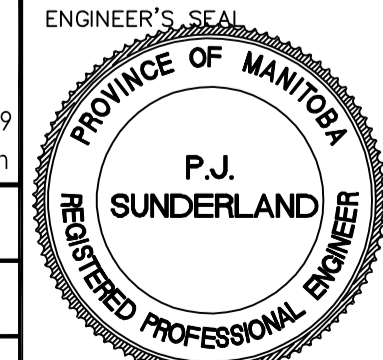
NO.	REVISIONS	DATE	BY
1	SUBMITTED FOR CITY REVIEW	20.03.27	P.J.S.

B.M. 32-005  
 ELEV. 231.677

**Stantec**  
 500 - 311 Portage Avenue, Winnipeg M8 Canada R3B 2B9  
 Tel. 204.489.5900 Fax. 204.453.9012 www.stantec.com

DESIGNED BY	P.J.S.	CHECKED BY	J.D.K.
DRAWN BY	L.D.	APPROVED BY	P.J.S.
HOR. SCALE:	1:500	RELEASED FOR CONSTRUCTION:	
VERTICAL:	1:50	DATE	

**ENGINEERS GEOSCIENTISTS MANITOBA**  
 Certificate of Authorization  
 Stantec Consulting Ltd.  
 No. 1301



**THE CITY OF WINNIPEG**  
 St. Boniface Industrial Park - PH 2 - STAGE 2&3  
**BLACK DIAMOND BOULEVARD**  
 MAZENOD ROAD TO  
 150m E OF MAZENOD ROAD

SHEET 4 OF 11  
 CAD FILE DRAWING NUMBER 09351C-201-PH2-2&3.DWG  
 CITY DRAWING NUMBER

VA:1689 (4/14/16) 1:500 (4/14/16) 0300 - d:\projects\0300 - d:\projects\0300 - stage\_2&3 (2017) (10/10) 09351c-201 - ph2 - 2&3.dwg  
 2020/03/26 4:03 PM By: davek, Labanada