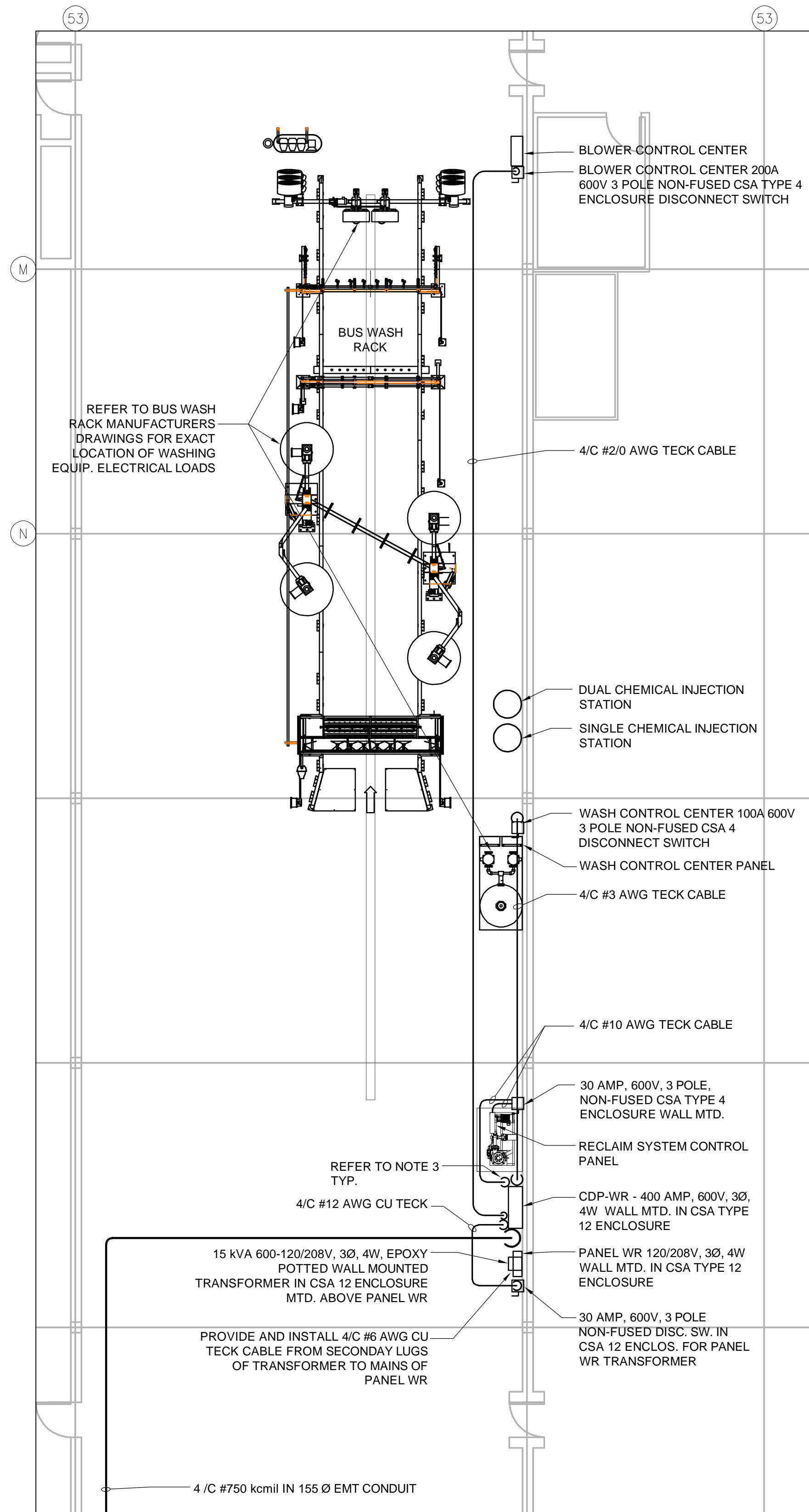
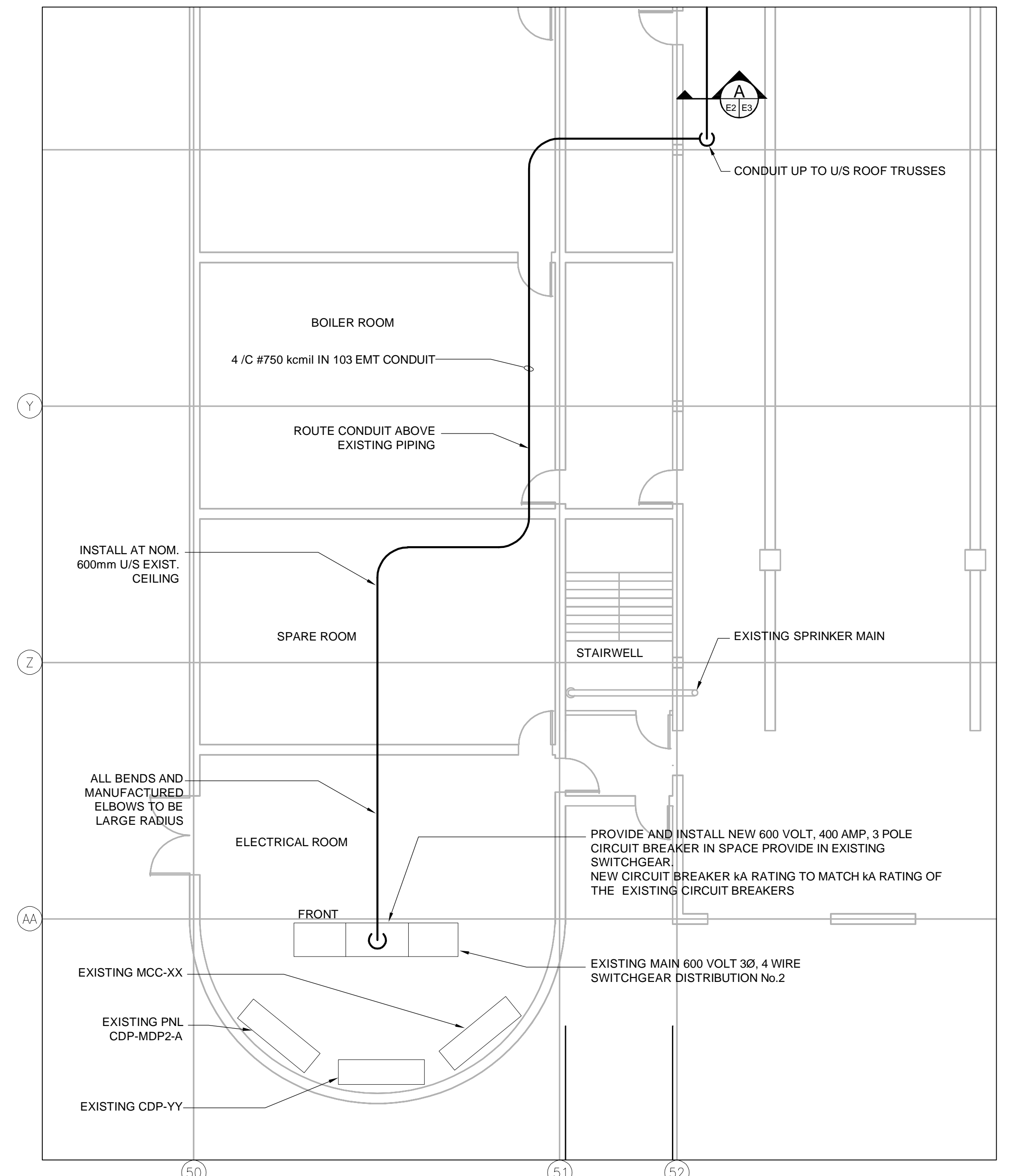


PARTIAL PLAN - BUS WASH FACILITY  
1:250



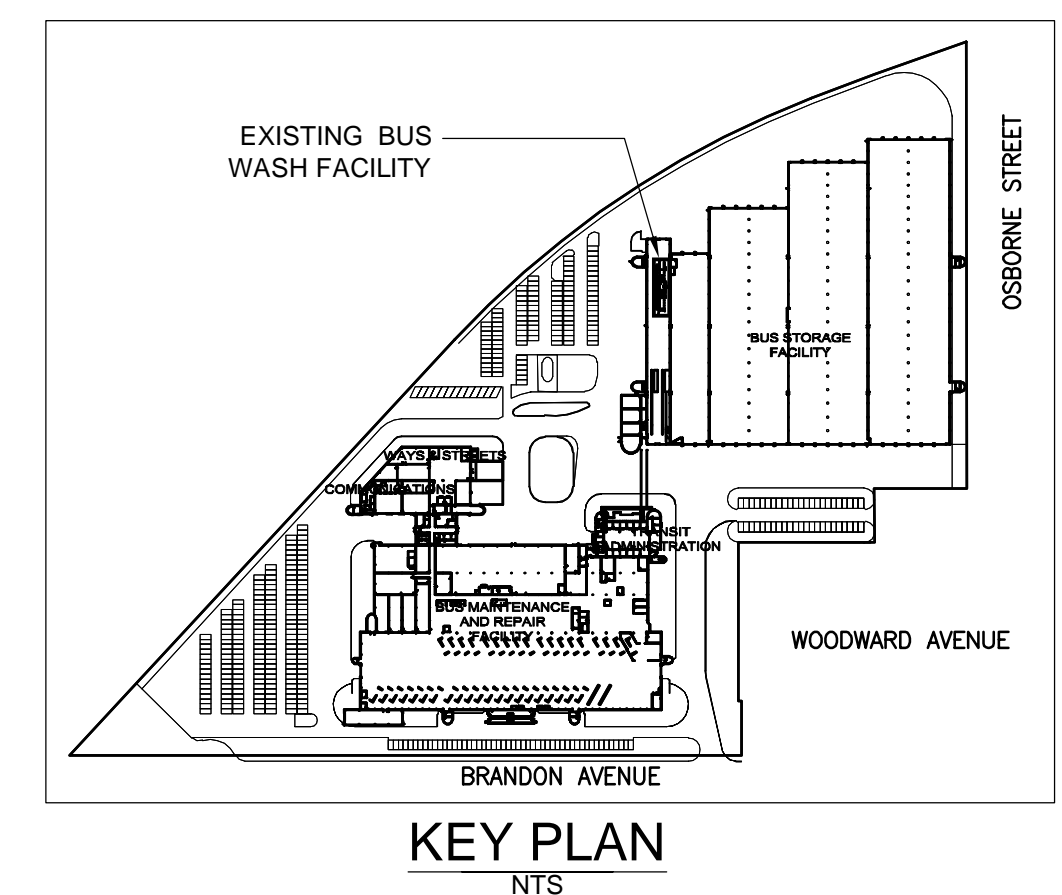
PARTIAL FLOOR PLAN - BUS WASH RACK  
1:100



PARTIAL FLOOR PLAN - EXISTING ELECTRICAL ROOM  
1:100

**NOTES**

- ELECTRICAL DESIGN IS BASED ON PSECO INC. EQUIPMENT AND EQUIPMENT ELECTRICAL REQUIREMENTS. CONTRACTOR RESPONSIBLE FOR DESIGN CHANGES REQUIRED BASED ON BUS WASH EQUIPMENT MANUFACTURER / SUPPLIER.
- REFER TO PSECO INC. SHOP DRAWINGS FOR BRANCH CIRCUITING TO MOTORS AND CONTROL DEVICES. ALL ELECTRICAL WIRING, CONDUIT, CONNECTIONS TO MEET CEC-1-2018.
- ALL CONNECTORS AND CONDUIT FITTINGS TO BE WATERTIGHT. ALL CONDUIT AND CABLE CONNECTIONS TO PANEL IN THE BUS WASH RACK AREA TO BE BOTTOM ENTRY.

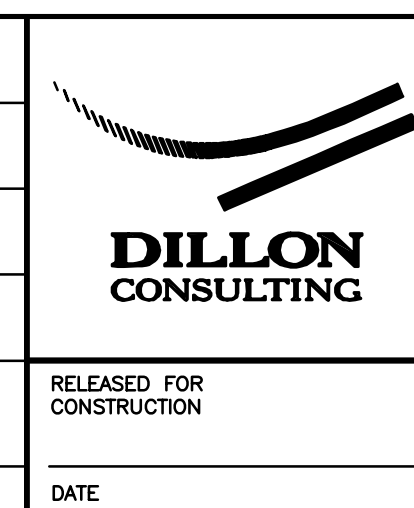


KEY PLAN  
NTS

C:\PROJECTS\WORKING\_DIRECTORY\PROJECTS\_2018\WASK\_DM503192\199071-07-ELEC-DES2.DWG

LOCATION UNDERGROUND	APPROVED STRUCTURES	B.M. ELEV.	DESIGNED BY	SCK
SUPV. U/G STRUCTURES COMMITTEE	DATE		DRAWN BY	SCK
			CHECKED BY	BLM
			APPROVED BY	
			HOR. SCALE	NOTED
			VERTICAL	
			DATE	2019-02-11
			DATE	

NOTE:  
LOCATION OF UNDERGROUND STRUCTURES AS SHOWN ARE BASED ON THE BEST INFORMATION AVAILABLE, BUT NO GUARANTEE IS GIVEN THAT ALL EXISTING UTILITIES ARE SHOWN OR THAT THE GIVEN LOCATIONS ARE EXACT. CONFIRMATION OF EXISTENCE AND EXACT LOCATION OF ALL SERVICES MUST BE OBTAINED FROM THE INDIVIDUAL UTILITIES BEFORE PROCEEDING WITH CONSTRUCTION.



ENGINEER'S SEAL  
CONSULTANT PROJECT NO.  
199071

**THE CITY OF WINNIPEG TRANSIT DEPARTMENT**

Fort Rouge Garage Bus Wash Rack Replacement, Winnipeg, Manitoba

ELECTRICAL - NEW CONSTRUCTION FLOOR PLANS

CITY DRAWING NUMBER: P-XXXX- ----  
SHEET X OF X  
CONSULTANT DRAWING NUMBER: E2