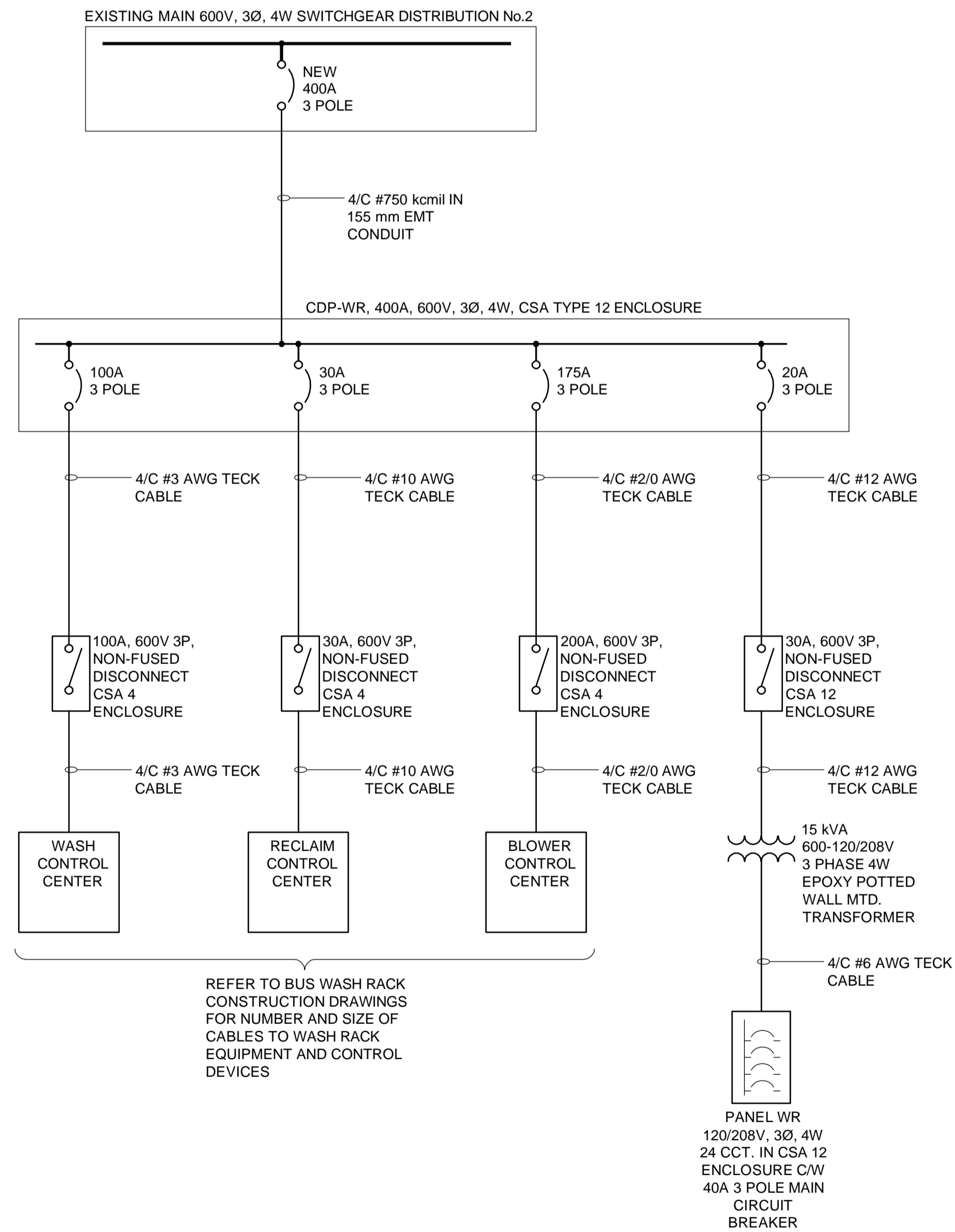
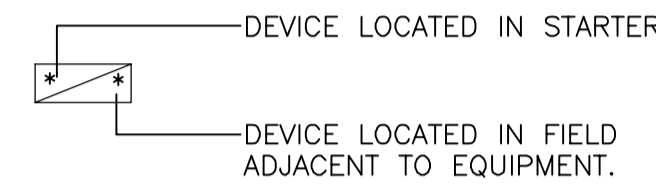
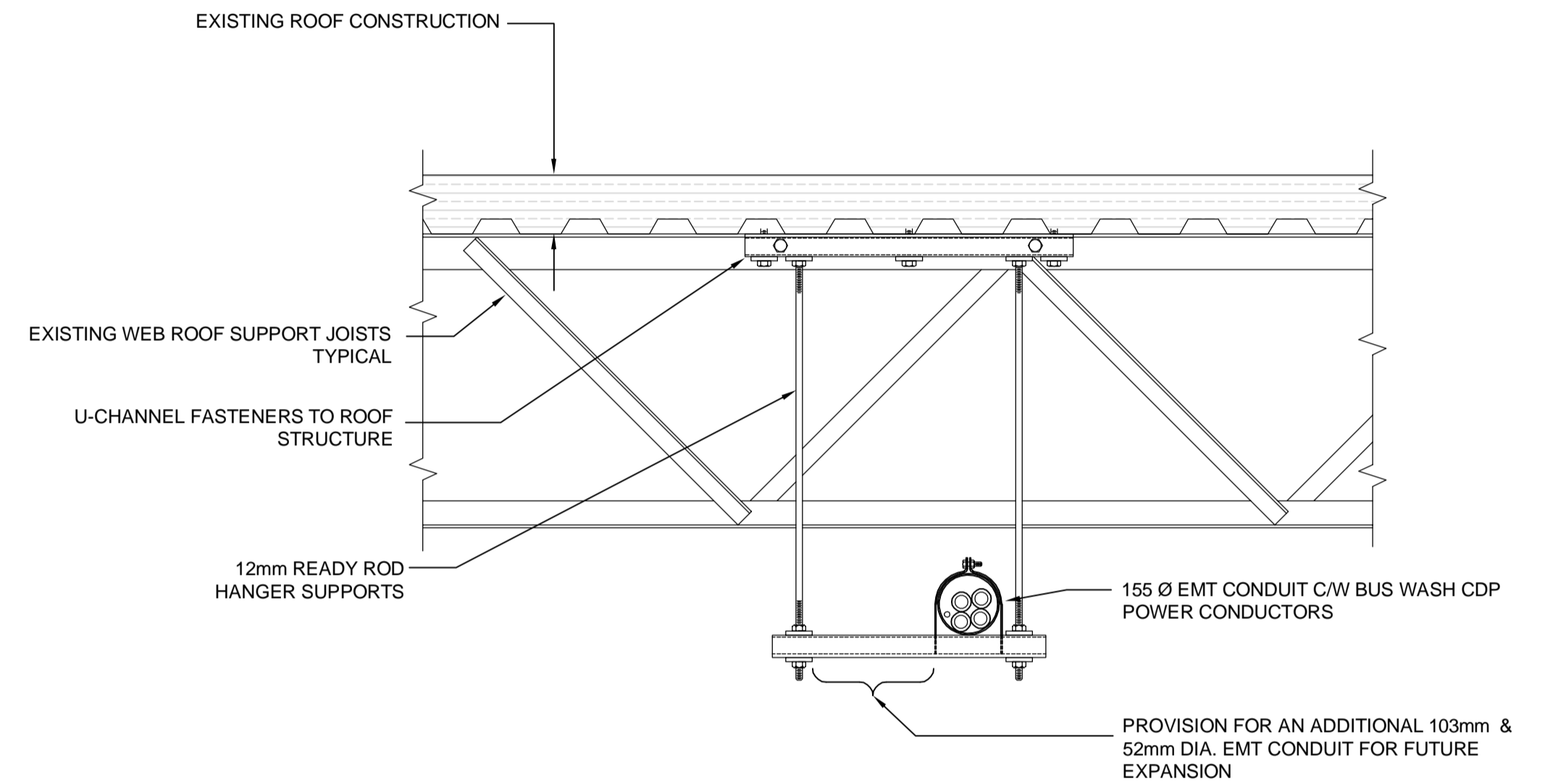


MOTOR - EQUIPMENT SCHEDULE																		
MOTOR / EQUIPMENT			STARTER							POWER		POWER			DETAIL DWG. WIRE DIAGRAM	REMARKS		
EQUIP. NO.	DESCRIPTION	EQUIP. LOAD	VOLT/Ø	SIZE	TYPE	MAN.	MAG.	S/S	PL	HOA	OVERCURRENT DEVICE	LOCATION	PANEL	CCT			FEEDER	CAPACITOR SIZE
M-01	DRIVER SIDE REAR BRUSH	5 HP	600/3	1	FVNR						15A-3P				3C #12 TECK		INTERNAL	WASH CONTROL CENTER
M-02	DRIVER SIDE BRUSH	5 HP	600/3	1	FVNR						15A-3P				3C #12 TECK		INTERNAL	WASH CONTROL CENTER
M-03	PASSENGER SIDE REAR BRUSH	5 HP	600/3	1	FVNR						15A-3P				3C #12 TECK		INTERNAL	WASH CONTROL CENTER
M-04	PASSENGER SIDE BRUSH	5 HP	600/3	1	FVNR						15A-3P				3C #12 TECK		INTERNAL	WASH CONTROL CENTER
M-05	BLASTER ARCH PUMP	40 HP	600/3	3	FVNR						70A-3P				3C #8 TECK		INTERNAL	WASH CONTROL CENTER
M-06	RECLAIM PUMP	7.5 HP	600/3	1	FVNR						15A-3P				3C #12 TECK	60A 3P CSA 4X	INTERNAL	RECLAIM CONTROL CENTER
M-07	RECIRCULATION PUMP	2 HP	600/3	1	FVNR						15A-3P				3C #12 TECK		INTERNAL	RECLAIM CONTROL CENTER
M-08	WASH WATER PUMP	5 HP	600/3	1	FVNR						15A-3P				3C #12 TECK		INTERNAL	WASH CONTROL CENTER
M-09	(8 X) BLOWER MOTORS	15 HP	600/3	2	FVNR						30A-3P				3C #10 TECK		INTERNAL	BLOWER CONTROL CENTER
M-11	CHEMICAL PUMP 1	FRAC.	120/1	-	FVNR						15A-1P				2C #12 TECK		INTERNAL	CHEMICAL CONTROL CENTER
M-12	CHEMICAL PUMP 2	FRAC.	120/1	-	FVNR						15A-1P				2C #12 TECK		INTERNAL	CHEMICAL CONTROL CENTER



**SINGLE LINE DIAGRAM**  
N.T.S.



**A CONDUIT HANGER DETAIL**  
N.T.S.

CDP-WR								
CCT NO	DESCRIPTION	LOAD	TRIP AMPS	N ABC	TRIP AMPS	LOAD	DESCRIPTION	CCT NO
01							SPACE	02
03	WASH CONTROL CENTER		100		20		PANEL WR 15 kVA TRANSFORMER	04
05			3P		3P		SPACE	06
07							SPACE	08
09	RECLAIM CONTROL CENTER		30				SPACE	10
11			3P				SPACE	12
13							SPACE	14
15	BLOWER CONTROL CENTER		175				SPACE	16
17			3P				SPACE	18
19	SPACE						SPACE	20
21	SPACE						SPACE	22
23	SPACE						SPACE	24

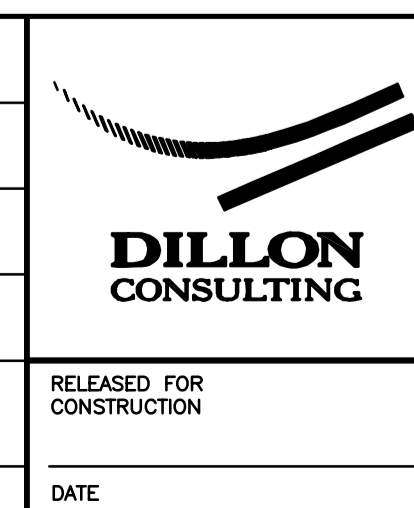
VOLTAGE: 600/347      PHASE: 3      WIRE: 4      BREAKER I.C.: -  
 MAIN BREAKER: -      MAINS: 400      FEEDER: 4 #750 kcmil R90 & 1 #3 AWG GRD IN 103 C  
 MOUNTING: SURFACE      LOCATION: WASH BAY  
 FED FROM: MAIN SWITCHGEAR DISTRIBUTION No.2

NOTES: -  
-  
-

CA\_PROJECTWISE\WORKING\_DIRECTORY\PROJECTS\_2019\WASK\_DM503192\199071-07-ELEC-DESS.DWG



LOCATION UNDERGROUND	APPROVED STRUCTURES	B.M. ELEV.	DESIGNED BY	SCK
SUPV. U/G STRUCTURES COMMITTEE	DATE		DRAWN BY	SCK
			CHECKED BY	BLM
			APPROVED BY	BLM
			HOR. SCALE	NOTED
			VERTICAL	
1	ISSUED FOR TENDER	20/03/27	DATE	2019-02-11
NO.	REVISIONS	DATE	BY	DATE



ENGINEER'S SEAL

CONSULTANT PROJECT NO.  
199071

**THE CITY OF WINNIPEG**  
TRANSIT DEPARTMENT

Fort Rouge Garage Bus Wash Rack Replacement, Winnipeg, Manitoba

ELECTRICAL - SCHEDULES AND DETAILS

CITY DRAWING NUMBER: P-XXXX- ----  
SHEET X OF X  
CONSULTANT DRAWING NUMBER: E3