

CONSTRUCTION NOTES

1. RENEW AND REPLACE MONOLITHIC CURB AND SIDEWALK
2. RENEW AND REPLACE 100mm CONCRETE SIDEWALK
3. INSTALL DETECTABLE WARNING SURFACE TILES AT RAMP CURB AS PER SD-229AA (TYP.)
4. REMOVE EXISTING 100mm SIDEWALK AND REPLACE WITH 150MM SIDEWALK
5. REMOVE EXISTING ASPHALTIC PAVEMENT AND PLACE NEW ASPHALTIC PAVEMENT TYPE 1A (AVG. THICKNESS 50mm)
6. REMOVE AND REPLACE EXISTING PATIO BLOCKS
7. REMOVE AND REINSTALL EXISTING BUS STOP BENCH
8. MAINTAIN MIN. OF 1.0m FROM CPR TRACKS AND REPLACE WITH ASPHALT UP TO RENEWED SIDEWALK
9. ADJUST CURB STOP TO GRADE
10. ADJUST WATER VALVE TO GRADE
11. CAUTION: CATHODICALLY PROTECTED WATERMAIN

GENERAL NOTES

- A. PAVEMENT DIMENSIONS ARE TO BACK OF CURB
- B. ALL CURB RADII UNDER 15.0m SHALL BE MODIFIED
- C. CURB REPLACEMENT AS DIRECTED BY CONTRACT ADMINISTRATOR
- D. CONTRACTOR TO CONFIRM THE LOCATION OF ALL UTILITIES/SERVICES IN THE FIELD PRIOR TO CONSTRUCTION

PRELIMINARY
NOT TO BE USED FOR
CONSTRUCTION

METRIC
WHOLE NUMBERS INDICATE MILLIMETERS
DECIMALIZED NUMBERS INDICATE METERS

BID OPPORTUNITY NO. 21-2020

EXISTING	LEGEND - PLAN	PROPOSED	EXISTING	LEGEND - PLAN	PROPOSED	EXISTING	LEGEND - PROFILE	PROPOSED
	HYDRANT			LDS/WWS			CONCRETE	
	VALVE			WATERMAIN			CONCRETE SIDEWALK	
	CURB STOP			GAS			ASPHALT	
	MANHOLE			TRAFFIC SIGNALS				
	CATCH BASIN			HYDRO/STREET LIGHT		---	EXISTING	---
	CURB INLET			MTS/SHAW		---	LEGEND - PLAN	---
	HYDRO POLE			CURB RENEWAL		---	PROPOSED	---
	LIGHT STANDARD			PROPERTY LINE		---	NORTH GUTTER	---
	TRAFFIC SIGNAL POLE			RAMP CURB		---	CENTER LINE	---
	SURVEY BAR			ELEVATIONS (31.000)		---	SOUTH GUTTER	---
	GEODETIC BENCH MARK			TREE		---	NORTH SIDEWALK	---
	LEGEND - PLAN			LEGEND - PLAN		---	SOUTH SIDEWALK	---

LOCATION APPROVED
UNDERGROUND STRUCTURES

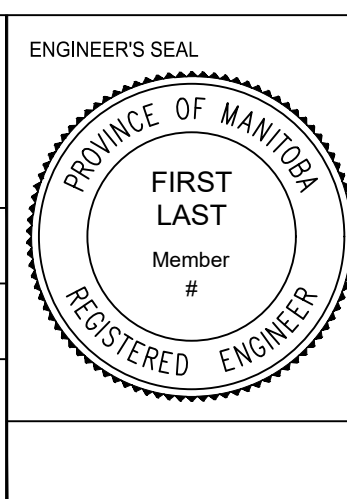
DATE _____

NOTE:
LOCATION OF UNDERGROUND STRUCTURES AS SHOWN ARE BASED ON THE BEST INFORMATION AVAILABLE. BUT NO GUARANTEE IS GIVEN THAT ALL EXISTING UTILITIES ARE SHOWN OR THAT THE GIVEN LOCATIONS ARE EXACT. CONFIRMATION OF EXISTENCE AND EXACT LOCATION OF ALL SERVICES MUST BE OBTAINED FROM THE INDIVIDUAL UTILITIES BEFORE PROCEEDING WITH CONSTRUCTION.

B.M. ELEV.	N/A	N/A

ENGINEERING DIVISION
TECHNOLOGY SERVICES BRANCH
106 - 1155 PACIFIC AVE

DESIGNED BY	M.S.	CHECKED BY	C.H.
DRAWN BY	S.D.	APPROVED BY	
HOR. SCALE: 1 : 250			
VERTICAL:			
DATE: 2020/01/22			



THE CITY OF WINNIPEG
PUBLIC WORKS DEPARTMENT

MOUNTAIN AVENUE
FROM AIRLIES STREET TO ARLINGTON STREET
REGIONAL SIDEWALK AND ASSOCIATED WORKS
FROM STA. 6+10 TO ARLINGTON

CITY DRAWING NUMBER SE-20-47	3
SHEET 3 OF 9	