

METRIC
 WHOLE NUMBERS INDICATE MILLIMETERS
 DECIMALIZED NUMBERS INDICATE METERS

- CONSTRUCTION NOTES**
1. REMOVE EXISTING MONOLITHIC CURB AND SIDEWALK AND INSTALL MONOLITHIC CURB AND SIDEWALK WITH BLOCKOUTS. (SEE BLOCKOUT DETAIL)
 2. RENEW EXISTING 100mm CONCRETE SIDEWALK
 3. REMOVE EXISTING CURB AND INSTALL NEW MODIFIED BARRIER CURB (150mm REVEAL HT. DOWELLED) AS PER SD-203B
 4. REMOVE AND REPLACE EXISTING PATIO BLOCKS
 5. ADJUST CURB STOP TO GRADE
 6. ADJUST WATER VALVE TO GRADE

- GENERAL NOTES**
- A. PAVEMENT DIMENSIONS ARE TO BACK OF CURB
 - B. ALL CURB RADII UNDER 15.0m SHALL BE MODIFIED
 - C. CURB REPLACEMENT AS DIRECTED BY CONTRACT ADMINISTRATOR
 - D. CONTRACTOR TO CONFIRM THE LOCATION OF ALL UTILITIES/SERVICES IN THE FIELD PRIOR TO CONSTRUCTION

PRELIMINARY
 NOT TO BE USED FOR
 CONSTRUCTION

BID OPPORTUNITY NO. 21-2020

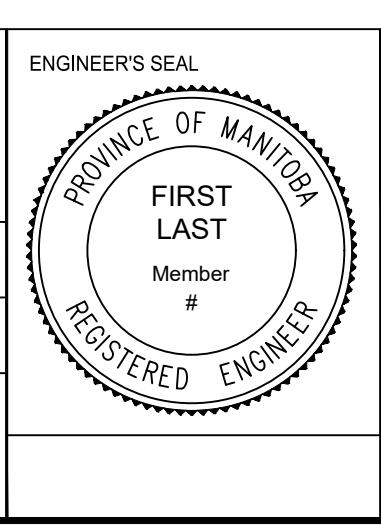
⊕	HYDRANT	◆	---	LDS/WWS	---	CONCRETE	---	LOCATION APPROVED	B.M. ELEV.	N/A
⊗	VALVE	◆	---	WATERMAIN	---	CONCRETE SIDEWALK	---	UNDERGROUND STRUCTURES	N/A	N/A
⊙	CURB STOP	●	---	GAS	---	ASPHALT	---			
○	MANHOLE	●	---	TRAFFIC SIGNALS	---		---			
□	CATCH BASIN	●	---	HYDRO/STREET LIGHT	---	EXISTING	LEGEND - PLAN	PROPOSED		
△	CURB INLET	◆	---	MTS/SHAW	---					
○	HYDRO POLE	◆	---	CURB RENEWAL	---		NORTH GUTTER	---		
○	LIGHT STANDARD	◆	---	PROPERTY LINE	---		CENTER LINE	---		
○	TRAFFIC SIGNAL POLE	◆	---	RAMP CURB	---		SOUTH GUTTER	---		
⊕	SURVEY BAR	◆	---	ELEVATIONS	---		NORTH SIDEWALK	---		
⊕	GEODETIC BENCH MARK	◆	---	TREE	---		SOUTH SIDEWALK	---		
EXISTING	LEGEND - PLAN	PROPOSED	EXISTING	LEGEND - PLAN	PROPOSED	EXISTING	LEGEND - PROFILE	PROPOSED		

LOCATION APPROVED
 UNDERGROUND STRUCTURES

SUPR. LIG. STRUCTURES COMMITTEE DATE

NOTE:
 LOCATION OF UNDERGROUND STRUCTURES AS SHOWN ARE BASED ON THE BEST INFORMATION AVAILABLE. BUT NO GUARANTEE IS GIVEN THAT ALL EXISTING UTILITIES ARE SHOWN OR THAT THE GIVEN LOCATIONS ARE EXACT. CONFIRMATION OF EXISTENCE AND EXACT LOCATION OF ALL SERVICES MUST BE OBTAINED FROM THE INDIVIDUAL UTILITIES BEFORE PROCEEDING WITH CONSTRUCTION.

DESIGNED BY	M.S.	CHECKED BY	C.H.
DRAWN BY	S.D.	APPROVED BY	
HOR. SCALE:	1 : 250		
VERTICAL:			
DATE	2020/01/21		



THE CITY OF WINNIPEG
 PUBLIC WORKS DEPARTMENT

ARLINGTON STREET
 FROM PORTAGE AVENUE TO ST. MATTHEWS AVENUE
 ASPHALT OVERLAY AND ASSOCIATED WORKS
 FROM STA. 3+30 TO ST. MATTHEWS AVE

CITY DRAWING NUMBER SE-20-49
 SHEET 5 OF 9

2