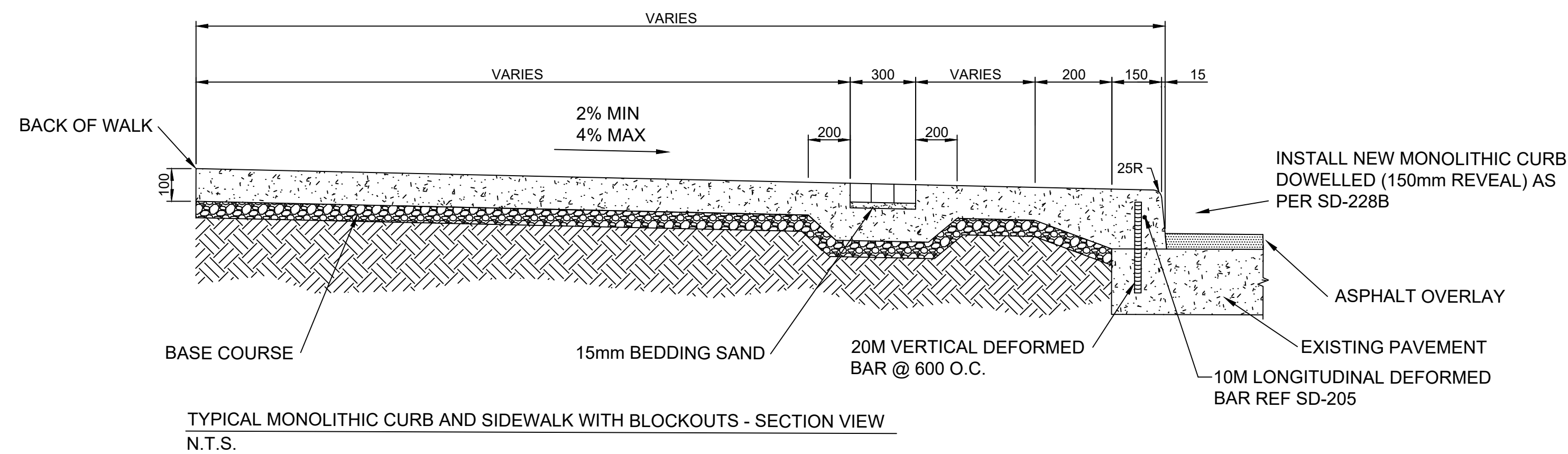


TYPICAL PAVING BAND PATTERN - PLAN VIEW
N.T.S.



TYPICAL MONOLITHIC CURB AND SIDEWALK WITH BLOCKOUTS - SECTION VIEW
N.T.S.

- CONSTRUCTION NOTES**
1. REMOVE EXISTING CURB AND SIDEWALK AND CONSTRUCT NEW MONOLITHIC CURB & 100mm SIDEWALK WITH BLOCKOUTS (AS PER DETAIL)
 2. INSTALL DETECTABLE WARNING SURFACE TILES AT INTERSECTION
 3. ADJUST WATER VALVE TO GRADE

- GENERAL NOTES**
- A. PAVEMENT DIMENSIONS ARE TO BACK OF CURB
 - B. ALL CURB RADII UNDER 15.0m SHALL BE MODIFIED
 - C. ADD 200.000m TO ALL DESIGN ELEVATION TO OBTAIN GEODETIC ELEVATIONS
 - D. CURB REPLACEMENT AS DIRECTED BY CONTRACT ADMINISTRATOR

PRELIMINARY
NOT TO BE USED FOR
CONSTRUCTION

BID OPPORTUNITY NO. 21-2020

METRIC
WHOLE NUMBERS INDICATE MILLIMETERS
DECIMALIZED NUMBERS INDICATE METERS

⊕	HYDRANT	◆	---	LDS/WWS	---	CONCRETE	▨
⊗	VALVE	●	---	WATERMAIN	---	CONCRETE SIDEWALK	▩
⊙	CURB STOP	●	---	GAS	---	ASPHALT	▧
○	MANHOLE	●	---	TRAFFIC SIGNALS	---		
□	CATCH BASIN	●	---	HYDRO/STREET LIGHT	---	EXISTING	LEGEND - PLAN
△	CURB INLET	◆	---	MTS/SHAW	---	PROPOSED	LEGEND - PROFILE
○	HYDRO POLE	◆	---	CURB RENEWAL	---		
○	LIGHT STANDARD	◆	---	PROPERTY LINE	---		
○	TRAFFIC SIGNAL POLE	◆	---	RAMP CURB	---		
⊕	SURVEY BAR	◆	---	ELEVATIONS	(31.000)		
⊕	GEODETIC BENCH MARK	◆	---	TREE	---		
⊕	EXISTING	---	---	LEGEND - PLAN	---	EXISTING	LEGEND - PROFILE
⊕	PROPOSED	---	---	LEGEND - PLAN	---	PROPOSED	LEGEND - PROFILE

LOCATION APPROVED
UNDERGROUND STRUCTURES

DATE

NOTE:
LOCATION OF UNDERGROUND STRUCTURES AS SHOWN ARE BASED ON THE BEST INFORMATION AVAILABLE. BUT NO GUARANTEE IS GIVEN THAT ALL EXISTING UTILITIES ARE SHOWN OR THAT THE GIVEN LOCATIONS ARE EXACT. CONFIRMATION OF EXISTENCE AND EXACT LOCATION OF ALL SERVICES MUST BE OBTAINED FROM THE INDIVIDUAL UTILITIES BEFORE PROCEEDING WITH CONSTRUCTION.

B.M. ELEV.	N/A		
	N/A		
NO.	REVISIONS	DATE	BY
0	ISSUED FOR TENDER	20/01/20	C.H.

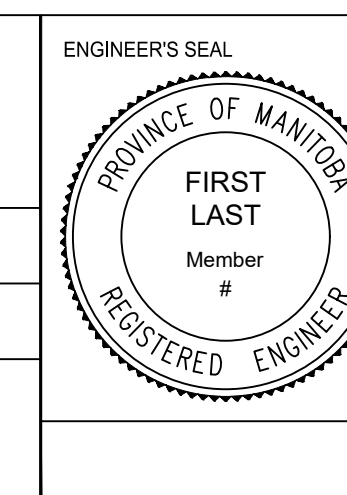
ENGINEERING DIVISION
TECHNOLOGY SERVICES BRANCH
106 - 1155 PACIFIC AVE

DESIGNED BY M.S. CHECKED BY C.H.

DRAWN BY T.G. APPROVED BY

HOR. SCALE: 1 : 250

VERTICAL: DATE 2020/01/21



THE CITY OF WINNIPEG
PUBLIC WORKS DEPARTMENT

SARGENT AVENUE
FROM LANGSIDE ST. TO McMICKEN ST.
REGIONAL SIDEWALK RENEWALS AND ASSOCIATED WORKS

CITY DRAWING NUMBER SE-20-50
SHEET 6 OF 9
1