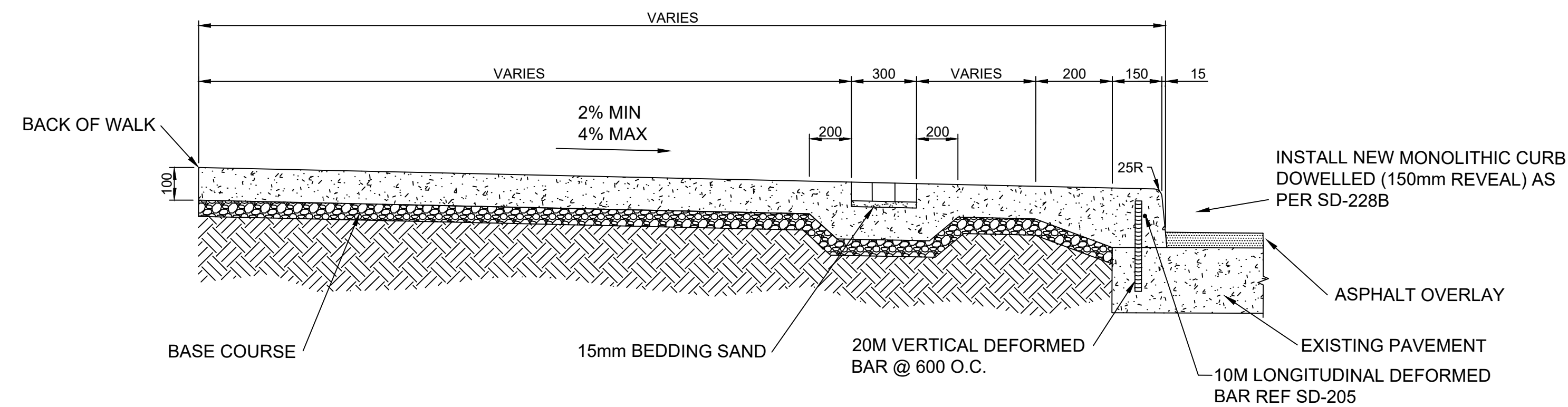


TYPICAL PAVING BAND PATTERN - PLAN VIEW  
N.T.S.



TYPICAL MONOLITHIC CURB AND SIDEWALK WITH BLOCKOUTS - SECTION VIEW  
N.T.S.

- CONSTRUCTION NOTES**
1. REMOVE EXISTING MONOLITHIC CURB & SIDEWALK AND CONSTRUCT MONOLITHIC CURB & 100mm SIDEWALK WITH BLOCKOUTS (AS PER DETAIL)
  2. INSTALL DETECTABLE WARNING SURFACE TILES AT INTERSECTION & RAMP CURBS AS PER SD-229AA (TYP.)
  3. REMOVE AND REPLACE FRAME AND COVER
  4. REMOVE AND REPLACE CURB INLET BOX COVER AND CURB INLET FRAME (AP-020, AP-021)
  5. ADJUST WATER VALVE TO GRADE

- GENERAL NOTES**
- A. PAVEMENT DIMENSIONS ARE TO BACK OF CURB
  - B. ALL CURB RADII UNDER 15.0m SHALL BE MODIFIED
  - C. ADD 200.000m TO ALL DESIGN ELEVATION TO OBTAIN GEODETIC ELEVATIONS
  - D. CURB REPLACEMENT AS DIRECTED BY CONTRACT ADMINISTRATOR

**PRELIMINARY**  
NOT TO BE USED FOR  
CONSTRUCTION

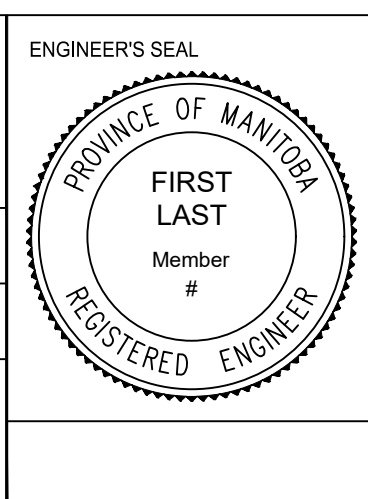
BID OPPORTUNITY NO. 21-2020

**METRIC**  
WHOLE NUMBERS INDICATE MILLIMETERS  
DECIMALIZED NUMBERS INDICATE METERS

|          |                     |          |          |                    |          |          |                   |          |                        |       |     |
|----------|---------------------|----------|----------|--------------------|----------|----------|-------------------|----------|------------------------|-------|-----|
| ⊕        | HYDRANT             | ◆        | ---      | LDS/WWS            | ---      | ---      | CONCRETE          | ▨        | LOCATION APPROVED      | B.M.  | N/A |
| ⊗        | VALVE               | ◆        | ---      | WATERMAIN          | ---      | ---      | CONCRETE SIDEWALK | ▨        | UNDERGROUND STRUCTURES | ELEV. | N/A |
| ⊙        | CURB STOP           | ●        | ---      | GAS                | ---      | ---      | ASPHALT           | ▨        |                        |       |     |
| ○        | MANHOLE             | ●        | ---      | TRAFFIC SIGNALS    | ---      | ---      |                   |          |                        |       |     |
| □        | CATCH BASIN         | ■        | ---      | HYDRO/STREET LIGHT | ---      | EXISTING | LEGEND - PLAN     | PROPOSED |                        |       |     |
| △        | CURB INLET          | ▲        | ---      | MTS/SHAW           | ---      | ---      |                   |          |                        |       |     |
| ⊙        | HYDRO POLE          | ▲        | ---      | CURB RENEWAL       | ---      | ---      | NORTH GUTTER      | ---      |                        |       |     |
| ⊙        | LIGHT STANDARD      | ●        | ---      | PROPERTY LINE      | ---      | ---      | CENTER LINE       | ---      |                        |       |     |
| ⊙        | TRAFFIC SIGNAL POLE | ●        | ---      | RAMP CURB          | ---      | ---      | SOUTH GUTTER      | ---      |                        |       |     |
| ⊕        | SURVEY BAR          | ◆        | ---      | ELEVATIONS         | ---      | ---      | NORTH SIDEWALK    | ---      |                        |       |     |
| ⊕        | GEODETIC BENCH MARK | ◆        | ---      | TREE               | ---      | ---      | SOUTH SIDEWALK    | ---      |                        |       |     |
| EXISTING | LEGEND - PLAN       | PROPOSED | EXISTING | LEGEND - PLAN      | PROPOSED | EXISTING | LEGEND - PROFILE  | PROPOSED |                        |       |     |

|  |                   |          |      |  |  |  |  |  |  |  |  |
|--|-------------------|----------|------|--|--|--|--|--|--|--|--|
| SUPR. LIG. STRUCTURES COMMITTEE  | DATE              |          |      |  |  |  |  |  |  |  |  |
| <b>NOTE:</b><br>LOCATION OF UNDERGROUND STRUCTURES AS SHOWN ARE BASED ON THE BEST INFORMATION AVAILABLE. BUT NO GUARANTEE IS GIVEN THAT ALL EXISTING UTILITIES ARE SHOWN OR THAT THE GIVEN LOCATIONS ARE EXACT. CONFIRMATION OF EXISTENCE AND EXACT LOCATION OF ALL SERVICES MUST BE OBTAINED FROM THE INDIVIDUAL UTILITIES BEFORE PROCEEDING WITH CONSTRUCTION. |                   |          |      |  |  |  |  |  |  |  |  |
| 0  | ISSUED FOR TENDER | 20/01/20 | C.H. |  |  |  |  |  |  |  |  |
| NO.  | REVISIONS         | DATE     | BY   |  |  |  |  |  |  |  |  |

|  |            |             |      |
|--|------------|-------------|------|
| ENGINEERING DIVISION<br>TECHNOLOGY SERVICES BRANCH<br>106 - 1155 PACIFIC AVE |            |             |      |
| DESIGNED BY  | M.S.       | CHECKED BY  | C.H. |
| DRAWN BY   | T.G.       | APPROVED BY |      |
| HOR. SCALE:  | 1 : 250    |             |      |
| VERTICAL:  |            |             |      |
| DATE   | 2020/01/21 |             |      |



**THE CITY OF WINNIPEG**  
PUBLIC WORKS DEPARTMENT

**SARGENT AVENUE**  
FROM ASHBURN ST. TO ALLEY WEST OF STRATHCONA ST  
REGIONAL SIDEWALK RENEWALS AND ASSOCIATED WORKS

|                     |          |
|---------------------|----------|
| CITY DRAWING NUMBER | SE-20-51 |
| SHEET               | 7 OF 9   |
|                     | 1        |