

- CONSTRUCTION NOTES**
1. REMOVE EXISTING MONOLITHIC CURB AND SIDEWALK AND INSTALL MONOLITHIC CURB AND SIDEWALK WITH BLOCKOUTS. (AS PER BLOCKOUT DETAIL)
 2. RENEW MONOLITHIC CURB AND SIDEWALK
 3. INSTALL DETECTABLE WARNING SURFACE TILES AT RAMP CURB AS PER SD-229AA (TYP.)
 4. ADJUST EXISTING TRAFFIC SIGNAL SERVICE BOX TO GRADE
 5. REMOVE AND REINSTALL EXISTING BENCH
 6. REMOVE AND REPLACE EXISTING SIDEWALK WITH 150mm REINFORCED WALK
 7. REMOVE AND REPLACE EXISTING ASPHALT
 8. ADJUST CURB STOP TO GRADE
 9. ADJUST CATHODICALLY PROTECTED WATER VALVE TO GRADE

- GENERAL NOTES**
- A. PAVEMENT DIMENSIONS ARE TO BACK OF CURB
 - B. ALL CURB RADII UNDER 15.0m SHALL BE MODIFIED
 - C. CURB REPLACEMENT AS DIRECTED BY CONTRACT ADMINISTRATOR
 - D. CONTRACTOR TO CONFIRM THE LOCATION OF ALL UTILITIES/SERVICES IN THE FIELD PRIOR TO CONSTRUCTION

PRELIMINARY
NOT TO BE USED FOR
CONSTRUCTION

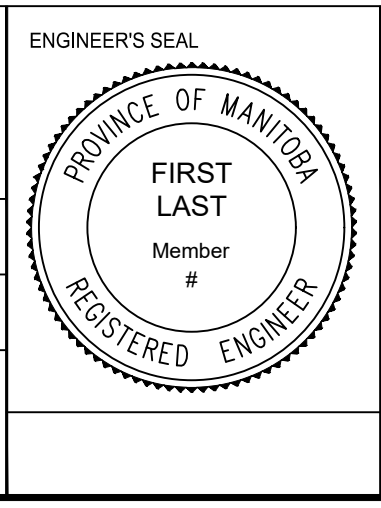
METRIC
WHOLE NUMBERS INDICATE MILLIMETERS
DECIMALIZED NUMBERS INDICATE METERS

BID OPPORTUNITY NO. 21-2020

⊕	HYDRANT	◆	---	LDS/WWS	---	CONCRETE	---
⊗	VALVE	●	---	WATERMAIN	---	CONCRETE SIDEWALK	---
○	CURB STOP	●	---	GAS	---	ASPHALT	---
○	MANHOLE	●	---	TRAFFIC SIGNALS	---		
○	CATCH BASIN	■	---	HYDRO/STREET LIGHT	---	EXISTING	LEGEND - PLAN
△	CURB INLET	▲	---	MTS/SHAW	---	PROPOSED	LEGEND - PROFILE
○	HYDRO POLE	▲	---	CURB RENEWAL	---		
○	LIGHT STANDARD	●	---	PROPERTY LINE	---		
○	TRAFFIC SIGNAL POLE	●	---	RAMP CURB	---		
⊕	SURVEY BAR	◆	---	ELEVATIONS	(31.000)		
▲	GEODETIC BENCH MARK	◆	---	TREE	---		
⊕	EXISTING	◆	---	PROPOSED	---	EXISTING	LEGEND - PROFILE
⊕	LEGEND - PLAN	◆	---	PROPOSED	---	EXISTING	LEGEND - PROFILE

LOCATION APPROVED UNDERGROUND STRUCTURES		B.M. ELEV.	N/A
SUPR. U/G STRUCTURES COMMITTEE		DATE	
NOTE: LOCATION OF UNDERGROUND STRUCTURES AS SHOWN ARE BASED ON THE BEST INFORMATION AVAILABLE. BUT NO GUARANTEE IS GIVEN THAT ALL EXISTING UTILITIES ARE SHOWN OR THAT THE GIVEN LOCATIONS ARE EXACT. CONFIRMATION OF EXISTENCE AND EXACT LOCATION OF ALL SERVICES MUST BE OBTAINED FROM THE INDIVIDUAL UTILITIES BEFORE PROCEEDING WITH CONSTRUCTION.			
0	ISSUED FOR TENDER	20/01/20	C.H.
NO.	REVISIONS	DATE	BY

ENGINEERING DIVISION TECHNOLOGY SERVICES BRANCH 106 - 1155 PACIFIC AVE			
DESIGNED BY	M.S.	CHECKED BY	C.H.
DRAWN BY	S.D.	APPROVED BY	
HOR. SCALE: 1 : 250			
VERTICAL:			
DATE: 2020/01/21			



THE CITY OF WINNIPEG
PUBLIC WORKS DEPARTMENT

ROBLIN BOULEVARD
FROM GRANT AVENUE TO FAIRMONT ROAD
ASPHALT OVERLAY AND ASSOCIATED WORKS
FROM STA. 2+20 TO FAIRMONT

CITY DRAWING NUMBER SE-20-53
SHEET 9 OF 9
2