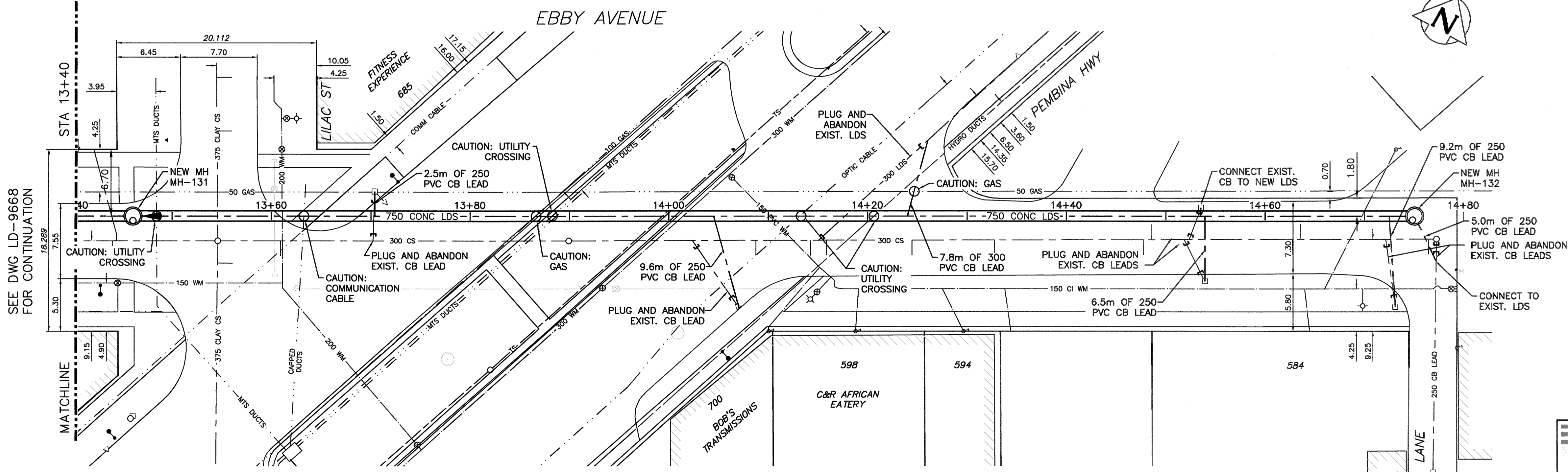
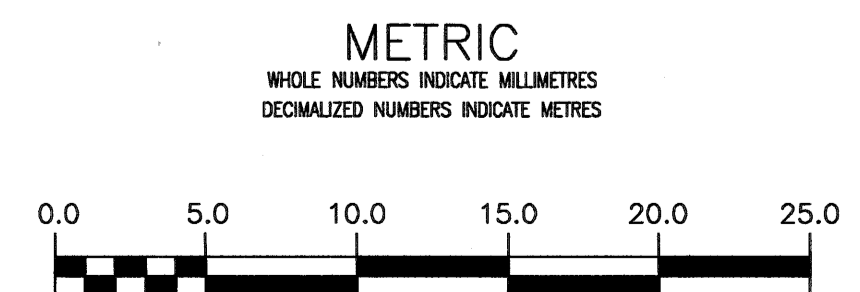


NOTE: CHAINAGES SHOWN ARE ALONG & OF PROPOSED LDS



SEE DWG LD-9668 FOR CONTINUATION

**ENGINEERS GEOSCIENTISTS MANITOBA**  
 Certificate of Authorization  
 CH2M Hill Canada Ltd.  
 No. 1441



**PROPERTY LIMITS DELINEATION**  
 DELINEATION OF PROPERTY LIMITS AS SHOWN ON THIS DRAWING DOES NOT REPRESENT A "LEGAL SURVEY". JACOBS AND KGS GROUP MAKE NO REPRESENTATION OR WARRANTY AS TO THE ACCURACY OF PROPERTY LIMITS DELINEATED ON THIS DRAWING, NOR ON THE DIMENSIONAL ACCURACY OF DRAWING FEATURES RELATIVE TO THOSE PROPERTY LIMITS.

**WARNING**  
 IF POWER EQUIPMENT OR EXPLOSIVES ARE TO BE USED FOR EXCAVATION ON THIS PROJECT THE CONTRACTOR MUST:  
 1) NOTIFY THE GAS COMPANY OF THE PROPOSED LOCATION OF EXCAVATION.  
 2) TAKE PRECAUTION TO AVOID DAMAGE TO GAS COMPANY INSTALLATIONS.  
 SEE PROVINCIAL REGULATION 210/72 FOR DETAILS

**LOCATION APPROVED UNDERGROUND STRUCTURES**  
 SUPV. U/G STRUCTURES COMMITTEE DATE  
 NOTE:  
 LOCATION OF UNDERGROUND STRUCTURES AS SHOWN ARE BASED ON THE BEST INFORMATION AVAILABLE BUT NO GUARANTEE IS GIVEN THAT ALL EXISTING UTILITIES ARE SHOWN OR THAT THE GIVEN LOCATIONS ARE EXACT. CONFIRMATION OF EXISTENCE AND EXACT LOCATION OF ALL SERVICES MUST BE OBTAINED FROM THE INDIVIDUAL UTILITIES BEFORE PROCEEDING WITH CONSTRUCTION.

B.M. ELEV.	NO.	REVISIONS	DATE	BY
	0	ISSUED FOR TENDER	20/03/12	JBC

**JACOBS KGS GROUP**

DESIGNED BY: SDG	CHECKED BY: MD
DRAWN BY: JBC	APPROVED BY: S.D. GODON (KGS Group)
HOR. SCALE: 1:250	RELEASED FOR CONSTRUCTION: [Signature]
VERTICAL: 1:50	DATE: 17/02/2023

ENGINEER'S SEAL  
 PROVINCE OF MANITOBA  
 S. D. GODON  
 Member  
 25524  
 REGISTERED PROFESSIONAL ENGINEER  
 CONSULTANT DRAWING NO. C-2023

**THE CITY OF WINNIPEG WATER AND WASTE DEPARTMENT**

PROJECT TITLE: COCKBURN AND CALROSSIE COMBINED SEWER RELIEF WORKS - CONTRACT 6A  
 EBBY AVENUE  
 3.9 W LILAC STREET TO LANE E PEMBINA HIGHWAY

SHEET 11 OF 14  
 COMPUTER FILE NAME: C-2023.dwg  
 CITY DRAWING NUMBER: LD-9669

Filename C:\p\_w\workdir\ch2mhill\wbg\cortez\ld0445899\